



LABORTOPS

valid until 30.09.2024

REFRACTOMETER ABBE 5

- RI and Brix Scale
- Complete Measuring Range
- Incl. Carrying Case



Bellingham
+ Stanley

a xylem brand

New



Page 3

Laboratory Burner	2
Refractometry	3
Optics	4
Spectroscopy	5
Density Measurement	6
Temperature Measurement	7
General Laboratory Supply	8 - 9
Glassware	10
Cell Culture	11
Life Science	12 - 13
Liquid Handling	14 - 17
Cleaning	18
Occupational Safety	19

pH Measurement	20 - 21
Heating	22
Ultra-low temperature cooling	23
Sampling	24
Sample Preparation	25
Chromatography	26
Ultrapure Water	27
Vacuum Technology	28
Weighing	29
Stirring and Shaking	30
Centrifugation	31
Rotary evaporator	32

Spirit burner, 18/10 steel



With a wick height adjuster and sealing cap.
Capacity approx. 60 ml.

-24%

Type	PK	Cat. No.	Price	Now
Spirit burner	1	9.018 560	GBP 18.45	GBP 14.02

Square Quadrupod with glass ceramic plate



New



Plate attachment can be used as a protective table mat.
Quadruped made of stainless steel, feet removable.

-22%

Width	Depth	Height	Weight	PK	Cat. No.	Price	Now
mm	mm	mm	g			GBP	GBP
120	120	210	700	1	6.273 251	55.44	43.24
160	160	210	900	1	6.273 252	57.51	44.86
200	200	210	1100	1	6.273 253	63.54	49.56

Safety burner, Ms-Ni



Maximum temperature 1300 °C, with needle valve, **thermo safety element** (bimetallic flame sensor with magnetic lock), air regulator and pilot light. Nickel-plated brass and steel.
An anti-slip rubber coating under the base ensures absolute stability.

-12%

Type	Height	Rating	PK	Cat. No.	Price	Now
	mm	kW			GBP	GBP
Natural gas	180	1.53	1	9.018 388	166.46	146.48
Propane	180	2.36	1	9.018 389	166.46	146.48

Gas safety tubing, rubber



Flexible connecting line of rubber tubing with a contracted metal spiral and double-sided end sockets according to DVGW 5501(P). Kink resistant. For connecting between safety gas connection fitting according to DIN 3383-4 and gas burners for laboratories according to DIN 30665 section 1.

For all gases according to DVGW worksheet G 260, at pressures up to 100 mbar and temperatures up to 70 °C. Installations according to DVGW-TRGI 2008 and DVGW worksheet G 621. DVGW Reg.-No. DG-4607AU2366.

-20%

Length	PK	Cat. No.	Price	Now
mm			GBP	GBP
500	1	9.018 935	33.61	26.89
750	1	9.018 937	38.72	30.98
1000	1	9.018 940	44.71	35.77
1500	1	9.018 945	57.58	46.06

LLG-uniREFRACTO 5 pro



LLG-uniREFRACTO 5 pro is a compact digital 3-scale handheld refractometer for measuring, e.g. Brix and refractive index of liquids. Two scales are pre-set to 0 - 95% Brix and 1.33 - 1.54 RI, the third scale can be freely selected from more than 45 different scales, including Brix, refractive index, AdBlue®, Baume, Butyro, Ethylene Glycol %, Calcium Chloride % and specific gravity. All three scales can be freely selected and changed.

- Easy switching between the three scales
- 4-digit LCD
- Automatic temperature correction

Scope of supply: Refractometer, protective cover

Specifications

Resolution:	0.1% Brix/0.0001 RI
Accuracy:	±0.2% Brix/±0.0003 RI
Operating temperature:	5 ... 40 °C
Measuring temperature sample:	5 ... 80 °C
Rel. Humidity:	< 95%
Dimensions (W x D x H):	120 x 55 x 35 mm
Weight:	180 g
Power supply:	2 x AAA/LR03
IP code:	IP 65

Type	PK	Cat. No.	Price	Now
LLG-uniREFRACTO 5 pro	1	6.263 632	297.97	250.29

-16%

Refractometer Abbe 5



a xylem brand



- New in the Range
- Digital Display
- Made in the EU



The refractometer measures both the refractive index over a large measuring range and the Brix value, and is suitable for applications in small laboratories with low sample throughput, schools, colleges, and universities. The prism temperature is monitored electronically and shown on the integrated digital display. Dispersion measurements of solids such as glass, contact lenses, and fibre optics can be performed according to standard procedures.

- Complete measuring range 0 to 95 °Brix
- Water bath connections enable prism temperature control
- Optional LED light source for mounting on the instrument base
- Battery operation 1 x 1.5 V
- Hard case for transport and storage
- Supplied with glass calibration plate and contact liquid

Measuring range	Resolution	Temp. range °C	PK	Cat. No.	Price	Now
0 ... 95 °Brix	0.1 °Brix	5 ... 70	1	4.694 612	1,657.80	1,425.71
1.30 ... 1.70 RI	0.0005 RI					

-14%

Sucrose (Brix) Standards



Certified stabilized Sucrose (Brix) Standards.
- ISO 17025 accredited



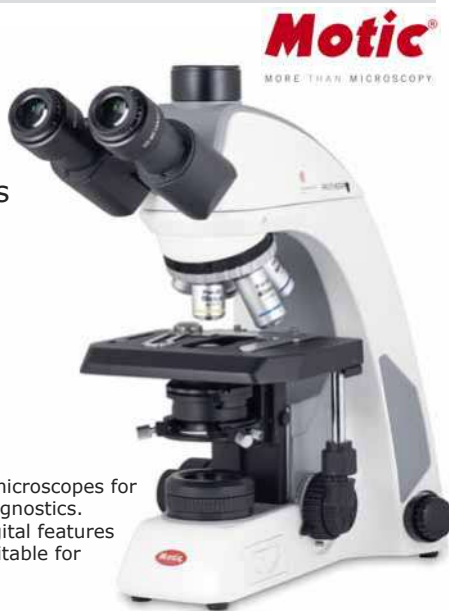
Brix	Refractive Index at 20 °C	PK	Cat. No.	Price	Now
%				GBP	GBP
5	1.340264 nD	1	6.265 876	69.05	65.60
10	1.347824 nD	1	6.257 923	69.05	65.60
15	1.355679 nD	1	6.263 260	69.05	65.60
20	1.363842 nD	1	6.264 889	69.05	65.60
30	1.381149 nD	1	6.258 368	69.05	65.60
40	1.399860 nD	1	7.660 408	69.05	65.60
50	1.420087 nD	1	6.258 369	69.05	65.60
60	1.441928 nD	1	6.265 875	69.05	65.60

-5%

Light microscopes Panthera C



Ideal for Training Purposes



Upright transmitted light microscopes for teaching, research and diagnostics. High-quality optics and digital features make them particularly suitable for professional users.

- Tube type Boiling Pot, swivelling
- Wide-field eyepieces for spectacle wearers with dioptre adjustment on both eyepieces
- CCIS® Plan Achromat objectives UC PL nosepiece, rear-facing, coded
- Focussable Abbe condenser with iris diaphragm and sliding slit
- Illumination according to Köhler, with replaceable illuminant
- With Motic LightTracer (Intelligent Light Management): LED brightness display, memory illumination intensity, automatic switch-off, mode display

Scope of delivery: Microscope, eyecups, blue filter, LED and halogen module, immersion oil (5 ml), Allen key, dust cover, mains cable

Specifications

Inclination Tube:	25°
Angle of rotation Tube:	360°
Eyepieces:	Widefield UC-WF10X/22 mm
Nosepiece:	Quintuple
Objectives:	Spring: 4X/0.10 (WD 30.5 mm), 10X/0.25 (WD 17.4 mm), 40X/0.65 (WD 0.6 mm), Spring/oil: 100X/1.25 (WD 0.16 mm)
Interpupillary distance:	48 ... 75 mm
Condenser:	N.A. 0.90/1.25 Abbe condenser
Illumination:	3 W LEDs/30 W Halogen
Focusing stroke:	25 mm
Dimensions Stage (W x D):	185 x 145 mm
Dimensions (W x D x H):	210 x 282 x 394 mm
Netweight:	8.4 kg
Power supply:	110 ... 240 V, 50/60 Hz

Type	Description	PK	Cat. No.	Price	Now
Panthera C2	Trinocular	1	4.681 955	1,737.00	1,389.60

-20%

C-Mount camera adapter



Description	PK	Cat. No.	Price	Now
Adapter C-Mount 0.5x	1	7.626 193	140.40	112.32

-20%

Microscope Camera MOTICAM S



New Generation

The next generation of Moticams offers solutions for a wide variety of applications in digital microscopy. Compact and robust, equipped with high-quality sCMOS sensors with many different resolutions and a fast USB 3.1 connection.



Type	Resolution	Sensor format	PK	Cat. No.	Price	Now
S1	1.2 MP (max. 1280 x 950 px)	1/3" sCMOS	1	4.672 118	396.00	317.52
S3	3 MP (max. 2448 x 1536 px)	1/2.8" sCMOS	1	4.672 119	497.70	398.16
S6	6 MP (max. 3072 x 2048 px)	1/1.8" sCMOS	1	4.672 120	623.70	498.96

-20%

Square cover slips



Made of D263 M borosilicate glass. Accurate cutting free of flaws and blisters.

Width	Length	Thickness	PK	Cat. No.	Price	Now
mm	mm	mm			GBP	GBP
15	15	0.13-0.16	200	9.161 015	2.54	2.55
18	18	0.13-0.16	200	9.161 018	2.07	2.21
20	20	0.13-0.16	100	9.161 019	2.07	1.49
22	22	0.13-0.16	100	9.161 023	2.27	1.63
24	24	0.13-0.16	100	9.161 025	2.84	2.04
26	21	0.13-0.16	100	9.161 021	2.93	2.11
32	24	0.13-0.16	100	9.161 032	3.72	2.68
40	24	0.13-0.16	100	9.161 040	4.08	2.94
50	24	0.13-0.16	100	9.161 050	4.70	3.38
60	24	0.13-0.16	100	9.161 060	5.42	3.90

-28%

Microscope slides



According to ISO 8037/1. Prewashed and polished. Nominal thickness 1 mm. Size 76 x 26 mm. Also available with 20mm, frosted, writing patch at one end.

Type	Description	Edge finish	PK	Cat. No.	Price	Now
Without frosted end	Extra white	Cut	50	9.161 110	2.10	1.39
With frosted end	Extra white	Cut	50	9.161 145	2.93	1.93
Without frosted end	Extra white	Ground 45°	50	9.161 120	3.80	2.51

-34%

Photometer PrimeLab 2.0 Starter-Kit, all parameters activated, except turbidity (NTU)/PTSA/Fluorescein



WATER-I.D.
WATER TESTING EQUIPMENT

- Large Colour Touch Display
- 18 Different Wavelengths
- 140 Different Parameter Methods



The photometer with 18 different wavelengths (3 sensors with 6 wavelengths each) covers the entire visible spectrum as well as important parts of the UV and IR spectrum.

- 5.5" colour HD touch display
- More than 140 different parameter methods
- Auto-calibration function
- Intelligent OTZ (One-Time-Zero) function
- Can be used with 1 ml, 16 mm and 24 mm cuvettes

Scope of delivery: Multitest Photometer PrimeLab 2.0, carrying case, 10 x 24 mm/10 ml cuvettes with cap, light protection cap, 16 and 24 mm cuvette adapter, stirring rod, 10 ml plastic syringe, cleaning brush, battery charger with USB cable type C, 20 ml Luer-Lock syringe, filter adapter, 2 cans with 50 filter papers, 100 ml can with cap

Specifications

Spectral range:	390 ... 950 nm, 18 wavelengths
Ambient temperature:	5 ... 45 °C
Rel. humidity:	30 ... 90%
Internal memory:	150.000 measurements
Datatransfer:	WiFi, GSM
Software:	LabCOM software, LabCOM App, LabCOM Cloud
Power supply:	8500 mA Li-Io battery, 5 V power supply with adapters
Dimensions (W x D x H):	100 x 255 x 59 mm
Weight:	715 g
Protection class:	IP 54
Warranty:	2 years

-16%

Type	PK	Cat. No.	Price	Now
PrimeLab 2.0 Starter-Kit	1	6.322 094	1,079.10	906.44
			GBP	GBP

Spectrophotometer LLG-uniSPEC 1



- Universally Applicable
- Stand-alone Device



LLG-uniSPEC 1 UV/VIS spectrophotometer is the ideal device for various routine laboratory applications including quality control, basic research and education.

- Standalone unit with large 2.5" LCD Display
- Automatic wavelength setting

Scope of supply: Spectrophotometer, dust cover, manual, 4 glass cuvettes, 2 quartz cuvettes

Specifications

Optical system:	Single beam, grating 1200 lines/mm
Wavelength range:	190 ... 1000 nm
Bandwidth:	2 nm
Wavelength setting:	Auto
Photometric accuracy:	±0.5% T
Photometric range:	-0.3 ... 3 A, 0 ... 200% T, 0 ... 9999 C
Photometric mode:	T, A, C, F
Stray light:	≤0.1% T
Photometric stability:	≤0.002 A/30 min
Display:	LCD, 128 x 64 Dots
Detector:	Silicon photodiode
Light source:	Tungsten and deuterium lamp
Output:	USB port, parallel port
Dimension (W x D x H):	420 x 280 x 180 mm
Weight:	12 kg
Power supply:	85 ... 250 V

-13%

Type	Plug type	PK	Cat. No.	Price	Now
LLG-uniSPEC 1	EU/UK	1	6.263 636	1,875.56	1,631.74
				GBP	GBP

Colorimeter Ultrospec 35c

Compact, portable colourimetre for measuring the absorbance/transmission of liquid samples in a cuvette or test tube at a specified wavelength to determine the molecular concentration.

- Large, backlit 4.3" LCD colour touchscreen display
- Modes: Absorbance, % transmission, kinetics
- Selectable wavelengths: 450, 500, 520, 540, 600, 640 nm

Scope of supply: Colorimeter, USB-C cable, 8 cuvettes, quick start guide, power supply with plug adapter EU, UK, China/AUS, US

Specifications

Wavelength range:	450 ... 640 nm
Spectral bandwidth:	40 nm
Photometric range:	0.3 ... 2.0 A
Photometric accuracy:	<±0.05A 1A
Photometric repeatability:	±0.02A at 1A
Dimensions (WxDxH):	170 x 210 x 50 mm
Weight:	0.6 kg
Power supply:	100 ... 240 V, 50/60 Hz



- Ideal for Determining Concentration
- Large LCD Display



-5%

Type	PK	Cat. No.	Price	Now
Ultrospec 35c	1	4.693 771	1,259.10	1,196.15
			GBP	GBP

Cell density meter Ultrospec 30



- Colour Touch Display
- Ideal for Life Science Applications

biochrom



New

Compact, portable device for measuring the density of cells in suspension at 600 nm. Ideally suited for microbiology applications such as plasmid amplification, antibiotic studies, and for performing growth phase analysis in bacterial and yeast suspensions. With the Ultrospec 30, standard curves can be generated using absorbance values or McFarland standards and stored for future quantification.

- Large, backlit 4.3" LCD colour touchscreen display
- USB ports for exporting measurement data
- Intuitive menu arrangement
- Storage of measurement data
- Easy cleaning and maintenance

Scope of supply: Cell density meter, USB-C cable, 8 cuvettes, quick start guide, power supply with plug adapter EU, UK, China/AUS, US

Specifications

Wavelength:	600 nm
Spectral bandwidth:	40 nm
Photometric range:	0.3 ... 2.0 A
Photometric accuracy:	<±0.05A 1A
Photometric repeatability:	±0.02A at 1A
Illuminants:	LED
Dimensions (WxDxH):	170 x 210 x 50 mm
Weight:	0.6 kg
Power supply:	100 ... 240 V, 50/60 Hz

-5%

Type	PK	Cat. No.	Price	Now
			GBP	GBP
Ultrospec 30	1	4.693 767	1,259.10	1,196.15

Hydrometers, relative density (S.G.)



Shot poised. Without thermometer.
Reference temperature: +20 °C.

-22%

Length	Measuring range	Sub-divisions	PK	Cat. No.	Price	Now
mm	g / ml	g / ml			GBP	GBP
280	0.800 - 1.000	0.002	1	9.004 008	12.44	9.70
280	1.000 - 1.200	0.002	1	9.004 010	12.64	9.86
280	1.200 - 1.400	0.002	1	9.004 012	12.64	9.86
280	1.400 - 1.600	0.002	1	9.004 014	14.56	11.36
280	1.600 - 1.800	0.002	1	9.004 016	14.56	11.36
300	1.000 - 1.500	0.005	1	9.004 060	14.58	11.37
300	1.500 - 2.000	0.005	1	9.004 065	14.99	11.69

Density meters DMA 35



- Portable
- Large Display
- Oscillator Principle

Anton Paar



Portable, digital measuring device for the determination of density, relative density and concentration. DMA 35 EX and DMA 35 EX Petrol are certified according to ATEX for applications in hazardous environments.

- On-site measurements for fast reactions
- Oscillator principle (borosilicate glass oscillator)
- Sample filling via manual filling pump or syringe
- Measuring of density, relative density, alcohol concentration, sugar/extraction concentration, API functions, H₂SO₄ concentration, ten programmable custom-specific measuring units
- Robust case with exchangeable cell
- 3 years warranty

Scope of supply: Density meter, filling tube, adapter for syringe filling, syringes, transportation case, rubber protection for measuring cell, 3 x batteries, allen key, instructions.

Specification

Density range:	0 ... 3 g/cm ³
Resolution:	0.0001 g/cm ³
Accuracy:	±0.001 g/cm ³
Sample temperature range:	0 ... 100 °C
Temperature measurement range:	0 ... 40 °C
Resolution:	0.1 °C
Accuracy:	±0.2 °C
Reproducibility standard deviation (acc. to ISO 5725):	0.0007 g/cm ³
Sample volume:	2 ml
Data memory:	1024 measurement results, 250 sample IDs, 30 measuring methods coloured LCD, self-rotating Bluetooth®, RFID
Display:	103 x 245 x 126 mm
Interfaces:	660 g
Dimensions (W x D x H):	3 x Mignon alkaline batteries, 1.5 V LR06 AA
Weight:	IP 54
Power supply:	
IP code:	

-5%

Type	PK	Cat. No.	Price	Now
			GBP	GBP
DMA 35 Standard	1	6.313 803	2,901.60	2,756.52
DMA 35 EX	1	6.313 804	3,466.80	3,293.46
DMA 35 EX Petrol	1	6.313 805	3,466.80	3,293.46

Thermohygrometer testo 608



testo 608-H1



Continuous monitoring of indoor climate

The testo 608-H1 continuously measures humidity, temperature and dew point.

As a precise alarm hygrometer, the testo 608-H2 reliably reports when limit values for humidity and temperature are exceeded.

- Continuous display of temperature and humidity or dewpoint
- With dew point calculation and max/min display
- Battery monitoring

Additional features testo 608 H2:

- LED alarm, warns if limits are exceeded
- High accuracy $\pm 2\%$ rH

Specifications

	testo 608-H1 // testo 608-H2
Power supply:	9 V block battery
Dimensions:	111 x 90 x 40 mm
Measuring range:	0 ... 50 °C // -10 ... 70 °C
Accuracy (at 25 °C):	± 0.5 °C (± 1 digit)
Measuring range:	10 ... 95% rH // 2 ... 98% rH
Accuracy (at 25 °C):	$\pm 3\%$ rH // $\pm 2\%$ rH
Operating temperature:	0 ... 50 °C // -10 ... 70 °C

-5%

Type	PK	Cat. No.	Price	Now
			GBP	GBP
testo 608-H1	1	9.726 964	78.30	74.39
testo 608-H2	1	9.726 965	113.40	107.73

Laboratory Max./Min. thermometer



Display of current, highest and lowest temperature, hold function, alarm at freely adjustable temperature values optical and audibly (upper/lower limit), selectable °C/°F readout.

Specifications

Sensor:	NTC
Resolution:	0.1 °C
Response time t90:	appr. 15 seconds in water
Dimensions (L x W x H):	86 x 57 x 30 mm
Sensor tube (L x diam.):	30 x 5 mm
Weight:	100 g

-27%

Type	Measuring range	Accuracy	Cable	PK	Cat. No.	Price	Now
		(\pm) °C	m			GBP	GBP
LT102	-50 ... 70	1	3	1	9.851 022	16.07	11.73

Standard PDF Data Logger EBI 300



PDF data logger with different temperature sensors.

- For temperature monitoring HACCP/IFS
- Analysis without software, as automatically generated PDF
- The simple use of the EBI 300 minimises application errors, training and IT costs.
- Complies with EN 12830, ATP, VO(EG) 37/2005

EBI 300: PDF data logger with internal temperature sensor

EBI 300 TE: PDF data logger with external temperature sensor, internal temperature sensor can be used additionally

EBI 300 TH: PDF data logger with external humidity and temperature sensor, internal temperature sensor can also be used

Specifications

Ambient Temperature:	-30 to +70 °C
Measuring range Temp. EBI 300/300 TH:	-30 to +70 °C
Measuring range Temp. EBI 300 TE:	-35 to +70 °C
Measuring range Humidity EBI 300 TH:	0 to 100% r.F.
Memory:	40.000 samples
Alarms:	2 values
IP code:	IP 65

-21%

Type	PK	Cat. No.	Price	Now
			GBP	GBP
EBI 300	1	7.655 865	84.60	66.83
EBI 300 TH	1	6.266 910	145.80	115.18
EBI 300 TE	1	6.266 911	137.70	108.78

LLG-Low temperature thermometers, -200 to 30 °C



Suitable for official calibration. Enclosed scale type, 8 to 9 mm diameter, with translucent glass scale and Richter seal. Prismatic, uncoated measuring capillary. The -200 to 30 °C thermometer has a luminous blue measuring capillary and is pentane-filled. Further thermometers are available, red toluene filled with uncoated measuring capillary. Graduated every 1 °C.

-20%

Measuring range	Length	PK	Cat. No.	Price	Now
				GBP	GBP
-50 ... 50 °C	300 mm	1	9.235 705	29.70	23.76
-100 ... 30 °C	300 mm	1	9.235 710	35.51	28.41
-200 ... 30 °C	300 mm	1	9.235 720	73.78	59.02

Label printer
DYMO® LabelWriter™ 550 Turbo



Ethernet interface enables LAN network connectivity.

Scope of supply: Label printer, 1 x label starter roll (28 x 89 mm), power adapter, power cable, USB cable, quick start guide

Max. label width: 59 mm
Print speed: 90 labels/min.
Weight: 645 g
Power supply: 24 V, 2.5 A

-7%

Type	External dimensions (W x D x H) mm	PK	Cat. No.	Price	Now
DYMO® LabelWriter™ 550 Turbo	127 x 187 x 136	1	4.687.586	163.79 GBP	152.32 GBP

High-performance labels LabelWriter™ for DYMO® label printers 550 Turbo, white



LW Labels with industrial adhesive for secure, permanent adhesion to many surfaces, such as paper, plastic, metal, wood, and glass.

-20%

Package contents	Dimensions (D x W) mm	PK	Cat. No.	Price	Now
1 roll with 800 labels	32 x 57	1	4.687.583	128.78 GBP	103.02 GBP
2 rolls with 450 labels	19 x 64	1	4.687.578	98.81 GBP	79.05 GBP
2 rolls with 350 labels	25 x 89	1	4.687.579	98.81 GBP	79.05 GBP
2 rolls with 850 labels	25 x 25	1	4.687.580	98.81 GBP	79.05 GBP

Culture tubes, Borosilicate glass 3.3, screw cap



Heavy walled, thickness 1.1 mm. Wide neck for easy inoculation and cleaning. Complete with aluminium screw cap (autoclavable/sterilisable) or plastic screw cap (steam autoclavable at 121 °C/sterilisable) and rubber seal.

-5%

Diam. mm	Nominal capacity ml	Length mm	Screw cap	PK	Cat. No.	Price	Now
16	15	98	Aluminium	100	9.010.612	172.80 GBP	164.16 GBP
16	20	150	Aluminium	100	9.190.600	212.40 GBP	201.78 GBP
16	15	98	Plastic	100	9.010.613	120.60 GBP	114.57 GBP
16	20	150	Plastic	100	9.190.605	177.30 GBP	168.44 GBP
25	50	150	Plastic	100	9.010.620	214.20 GBP	203.49 GBP

Tubes, culture, Soda-lime glass, screw cap



Complete with aluminium screw cap (autoclavable/sterilisable) or plastic screw cap (steam autoclavable at 121 °C/sterilisable) and rubber seal.

-5%

Diam. mm	Nominal capacity ml	Length mm	Screw cap	PK	Cat. No.	Price	Now
12	3	35	Aluminium	100	9.010.608	60.30 GBP	57.29 GBP
14	5	50	Aluminium	100	9.010.602	184.50 GBP	175.28 GBP
27	15	45	Aluminium	100	6.266.815	188.10 GBP	178.70 GBP
27	20	50	Aluminium	100	6.264.629	179.10 GBP	170.15 GBP
27	30	75	Aluminium	100	6.266.816	195.30 GBP	185.54 GBP
14	5	50	Plastic	100	9.010.603	100.80 GBP	95.76 GBP
27	15	45	Plastic	100	9.010.610	126.90 GBP	120.56 GBP
27	20	50	Plastic	100	9.010.611	139.50 GBP	132.53 GBP
27	30	75	Plastic	100	9.010.601	146.70 GBP	139.37 GBP

Gel pens Sharpie® S-Gel



Gel pen with ribbed soft-touch grip.

-36%

Colour	Line width mm	PK	Cat. No.	Price	Now
black	0.7	12	4.687.591	23.34 GBP	14.94 GBP
blue	0.7	12	4.687.595	23.34 GBP	14.94 GBP
red	0.7	12	4.687.594	23.34 GBP	14.94 GBP

Industrial jerrycans, HDPE



Natural. Jerrycans with capacity of 2 to 20 L. **Please order closures separately.**



-20%

Capacity	Dimensions (W x D x H)	Thread external diam.	PK	Cat. No.	Price	Now
L	mm	mm			GBP	GBP
2.0	145 x 109 x 196	45	25	4.679 547	70.32	56.26
2.5	153 x 115 x 208	45	25	4.679 548	82.37	65.90
3.0	153 x 115 x 240	45	25	4.679 550	105.67	84.54
10.0	230 x 190 x 310	50	10	4.679 546	31.82	25.46
5.0	190 x 145 x 251	50	16	4.679 551	28.80	23.04
20.0	290 x 246 x 385	60	6	4.679 549	96.04	76.83

Screw caps with tear-off ring for jerrycans, HDPE

-27%

For	Colour	PK	Cat. No.	Price	Now
				GBP	GBP
2 / 2,5 / 3 l	Red	10	9.140 012	3.88	2.83
5 / 10 l	Red	10	9.140 013	2.88	2.83
20 l	Red	10	9.140 014	6.00	4.38
5 / 10 l	Black	10	9.140 015	3.88	2.83

Erlenmeyer flasks, wide mouth, PMP, GL 45, with red screw cap, PP



Transparent. Suitable for microwaves. Cleaning up to max. 60° is recommended to protect the printing.

-28%

Nominal capacity	Grad.	PK	Cat. No.	Price	Now
ml	ml			GBP	GBP
75	10	1	9.140 995	5.33	3.84
125	20	1	9.140 996	6.26	4.51
250	50	1	9.140 997	10.34	7.42
500	100	1	9.140 998	11.71	8.43
1000	200	1	9.140 999	16.24	11.69

Wide-mouth bottles, soda-lime glass, clear



Topseller



Round thread neck by DIN 168. **Please order screw caps separately.**



-20%

Capacity	Diam.	Height	Neck thread	PK	Cat. No.	Price	Now
ml	mm	mm	GL			GBP	GBP
1000	103.5	180.5	68	18	7.960 506	51.93	41.54

Screw caps for wide-mouth bottles, PP/LDPE

Cap PP, seal LDPE

-20%

Neck thread	Material	For bottles	PK	Cat. No.	Price	Now
GL		ml			GBP	GBP
68	PP	1000	100	9.072 197	20.89	16.71



LLG-Round bottom flasks with standard ground joint, borosilicate glass 3.3



With standard ground joint and white inscription. Acc. to DIN ISO 4797.

Capacity ml	Ground size NS	Height mm	PK	Cat. No.	Price	
					GBP	Now GBP
50	29/32	90	2	4.686 129	10.58	8.46
100	29/32	105	2	4.686 133	9.31	7.45
250	29/32	140	2	4.686 134	10.71	8.57
500	29/32	163	2	4.686 138	14.38	11.50
1000	29/32	200	1	4.686 141	10.51	8.41
2000	29/32	240	1	4.686 143	17.67	14.14

-20%

LLG-Two-neck round bottom flasks with standard ground joint, borosilicate glass 3.3, angled side neck



Side neck at 20° angle to the middle neck. With white inscription. Acc. to DIN 12394.

Nominal capacity ml	Dimensions (dia. x H) mm	Centre neck NS	Side necks NS	PK	Cat. No.	Price	
						GBP	Now GBP
50	51 x 92	14/23	14/23	1	4.686 152	8.64	6.91
100	64 x 107	14/23	14/23	1	4.686 153	8.85	7.08
250	85 x 142	14/23	14/23	1	4.686 155	10.95	8.76
100	64 x 107	29/32	14/23	1	4.686 154	12.38	9.90
250	85 x 142	29/32	14/23	1	4.686 156	12.91	10.33
500	105 x 165	29/32	14/23	1	4.686 157	16.99	13.59
1000	131 x 203	29/32	14/23	1	4.686 158	28.98	23.18

-20%

LLG-Separating funnel acc. to Squibb, borosilicate glass 3.3

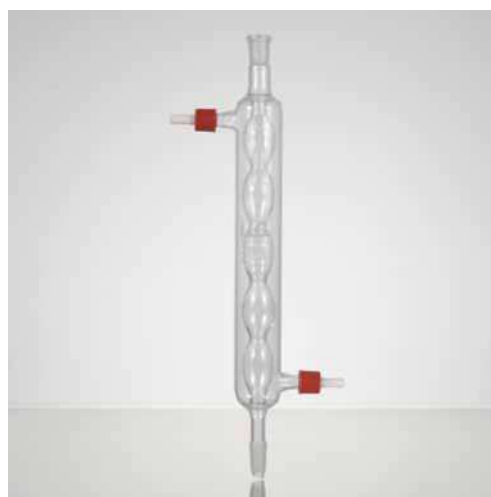


Separating funnel acc. to Squibb with PTFE stopcock.
- DIN ISO 4800
- With standard ground joint and stopper
- White Graduation

Nominal capacity ml	Bore mm	Ground size NS	PK	Cat. No.	Price	
					GBP	Now GBP
50	2.5	19/26	1	4.686 263	26.20	20.96
100	2.5	19/26	1	4.686 264	27.14	21.71
250	4	29/32	1	4.686 265	29.59	23.67
500	4	29/32	1	4.686 266	32.93	26.34
1000	6	29/32	1	4.686 267	46.06	36.85
2000	6	29/32	1	4.686 268	67.26	53.81

-20%

LLG-Condenser acc. to Allihn, borosilicate glass 3.3



For condensing vapours.
Water connection with with PP olives.
With standard ground cone and socket.
Acc. to DIN 12576.

Effective length mm	Cone NS	Socket NS	PK	Cat. No.	Price	
					GBP	Now GBP
250	29/32	29/32	1	4.686 196	22.76	18.21
400	29/32	29/32	1	4.686 197	32.46	25.97

-20%

LLG-Serological pipettes, PS, sterile

! **Topseller**



All LLG serological pipettes are plugged, sterile, pyrogen-free and have an increased volume capacity through extra graduations.

- Also available as short pipettes (5 ml, 10 ml and 25 ml) or wide-mouth pipettes (10 ml)
- Single-packed in easy-to-open plastic/paper packaging

-20%

Volume ml	Grad. ml	Colour code	Negative graduations	PK	Cat. No.	Price GBP	Now GBP
1	1/100	yellow	0.3	500	9.380.440	58.31	46.65
2	1/50	green	0.6	500	9.380.441	69.99	55.99
5	1/10	blue	3	200	7.930.401	22.66	26.13
10	1/10	orange	3	200	6.268.240	37.31	29.85
10	1/10	orange (wide mouth)	3	200	9.380.442	46.66	37.33
25	2/10	red	8	150	7.930.403	52.51	42.01
50	5/10	purple	10	100	9.380.443	58.31	46.65
5	1/10	blue (short form)	3	200	6.265.881	55.98	44.78
10	2/10	orange (short form)	10	150	6.265.882	55.98	44.78
25	5/10	red (short form)	9	100	6.265.883	48.99	39.19

Media Bottles Nalgene™, PETG, square, with screw cap, HDPE

Clear. For the storage of pH-sensitive liquids, such as culture media.

- Gamma-sterilized
- Pyrogen-free
- Non-cytotoxic
- Leakproof
- Reduced permeability of CO₂ and O₂
- USP class VI



-20%

Capacity ml	Diam. mm	Height mm	Neck diam. int. mm	PK	Cat. No.	Price GBP	Now GBP
30	38	64	14	280	4.661.898	510.00	408.00
60	41	82	18	200	7.662.116	369.23	295.38
125	53	109	28	96	6.289.580	260.77	208.62
250	59	145	28	60	4.666.084	230.77	184.62
500	74	177	28	40	4.652.706	211.54	169.23
1000	94	220	28	24	7.634.832	213.08	170.46
2000	116	271	39	12	7.633.706	203.85	163.08

Aspirator LLG-uniVACUUSYS



- Integrated vacuum pump with vacuum control
- Self-closing connectors for quick installation and prevention of liquid or aerosol escape
- **Liquid level sensor** prevents liquid overflow
- Autoclavable waste collection bottle and nozzle

Scope of supply: Vacuum Aspiration System with integrated vacuum pump, 4-litre waste collection bottle, single channel needles and 8-channel needle aspirator handles, single channel and 8-channel adaptor for 200 µl pipette tips, single channel adaptor for 1000 µl pipette, tubing and quick-connectors



Specifications

Vacuum range: 0 ... 600 mbar (adjustable)
 Aspiration rate: 1 ... 15 ml/s
 Noise emission: <50 dB(A)
 Dimensions (W x D x H): 180 x 320 x 530 mm
 Weight: 3.4 kg
 Power supply: 100 ... 240 V, 50/60 Hz

-16%

Type	Plug type	PK	Cat. No.	Price GBP	Now GBP
LLG-uniVACUUSYS	EU	1	6.263.585	877.00	736.68
LLG-uniVACUUSYS	UK	1	6.263.586	911.36	765.54

Filter units, PES membrane, sterile



These bottle-top filter units are ideally suited for separating or purifying samples contained in large volumes.

- Bottle-top filter and reservoir bottle are included
- Lightweight and stable wall construction
- Pyrogen-free

-20%

Capacity ml	Pore size µm	Neck thread mm	PK	Cat. No.	Price GBP	Now GBP
250	0.22	45	12	6.267.180	73.92	59.14
250	0.45	45	12	6.267.181	73.92	59.14
500	0.22	45	12	6.267.182	90.94	72.75
500	0.45	45	12	6.267.183	90.94	72.75
1000	0.22	45	12	6.267.184	147.83	118.26
1000	0.45	45	12	6.267.185	147.83	118.26



- Made in Germany
- High Quality from Brand



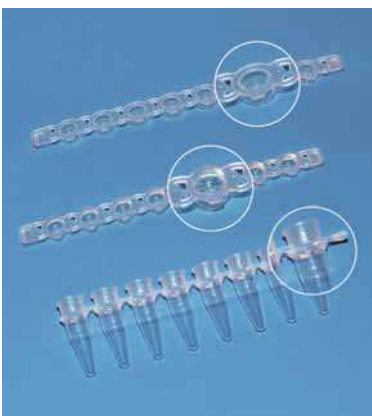
Single PCR tubes with attached caps, PP



Colourless 0.2 ml and 0.5 ml PCR tubes with attached lids are suitable for use in thermal cyclers with heatable lids from all common manufacturers.

				-21%	
Capacity	Description	PK	Cat. No.	Price	Now
ml				GBP	GBP
0.2	domed cap	1000	9.409 370	64.35	50.84
0.2	flat cap	1000	9.409 371	40.74	32.18
0.5	flat cap	1000	9.409 372	48.60	38.39

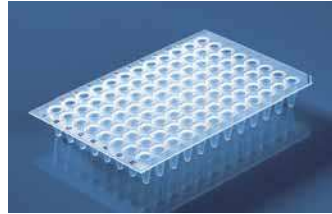
Strips of 8- PCR tubes plus detached cap strips, PP



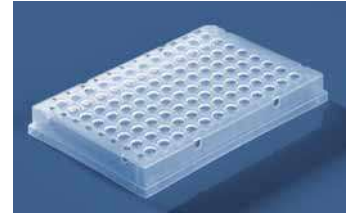
Colourless 8 contiguous 0.2 ml tubes. The separate lids are also available in strips of 8 or 12. Extra thin, even walls for optimum heat transfer. Made of high-quality polypropylene, RNase-, DNase- and DNA-free.

				-23%	
Capacity	Description	PK	Cat. No.	Price	Now
ml				GBP	GBP
0.2	without caps	125	9.409 374	70.97	54.65
0.2	with separate flat caps	250	4.007 894	247.26	167.29
0.2	with separate domed caps	250	4.007 895	204.03	157.10

96 well PCR-Plates, PP, for PCR or qPCR



9.409 247



9.409 351

The particularly thin-walled design of the PCR plates enables even, fast and precise heat transfer. The edges of the wells are shaped to protect against cross-contamination and allow reliable sealing with the sealing mats designed for the plates. With blue alphanumeric coding and cut corners for easy orientation, or as indicated.

96-well, non-skirted

PP. 0.2 ml wells. 96-well non-skirted PCR plates are suitable for most commercially available thermocyclers.

96-well, semi-skirted

PP. 0.2 ml wells. 96-well semi-skirted PCR plates can easily be labelled or tagged with a barcode.

96-well, skirted

PP. 0.2 ml wells. 96-well-skirted PCR plates are especially rigid and are optimally suited for use with automatic pipetting systems and for being transported.

				-17%		
Description	Volume	Cut corner	PK	Cat. No.	Price	Now
	ml				GBP	GBP
Low Profile, non-skirted	0.15	H12	50	9.409 247	156.65	130.02
Low Profile, semi skirted	0.15	A12	50	9.409 256	156.65	130.02
Low Profile, fully skirted*	0.15	H1	50	9.409 351	275.13	228.36
Standard profile, non-skirted	0.20	A12	50	9.409 254	156.65	130.02
Standard profile, semi skirted	0.20	A12	50	9.409 264	156.65	130.02
Standard profile, non-skirted, elevated rim	0.20	H12	50	9.409 381	152.68	126.72

*Black alphanumeric code, no additional markings on the cut corner.

Sealing Films, Self-adhesive, PES

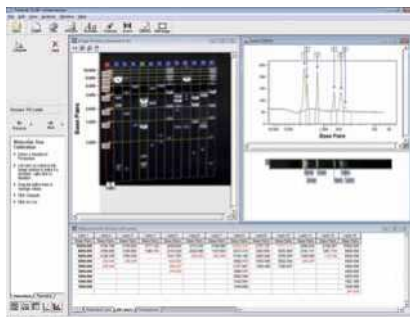


In case the microplates, PCR- and Deepwellplates need not only to be covered but also securely sealed, self-adhesive sealing films are available. These film sheets can be easily applied on the plates and removed also without the use of expensive equipment. They are available in different versions and are especially well-suited for storage or cell- and tissue culture.

				-26%	
Description	Application	PK	Cat. No.	Price	Now
				GBP	GBP
single film	ELISA, PCR	100	9.409 386	112.10	82.95
single film, highly transparent	ELISA, Real-Time PCR	100	4.000 237	157.46	116.52

Gel documentation system microDOC with UV-Transilluminator

! Ideal for Training Purposes



Data transfer to the computer is possible with the optional TotalLab™ 1D software. Use in conjunction with any 21 x 21 cm UV transilluminator. Data storage on the memory card is possible in RAW, TIFF-RGB and JPEG.

microDOC BASIC: The microDOC BASIC is a simple low-cost system comprising a lift-off dark room hood and a 24.1-megapixel digital camera, through which the gel is viewed directly. This system can be supplied with optional TotalLab™ 1D Analysis Software and any one of the 21 x 21 cm transilluminators (please enquire).

TotalLab™ 1D software: is supplied only as part of a complete package with each of the microDOC and transilluminator options. Its main functions include lane creation, background subtraction, band detection, profile deconvolution, and molecular size, pI and quantity calibration. More sophisticated standalone software options are available for 1D applications that require band matching, array, colony counting and image ToolBox functionalities.

Camera:

- File Format Design rule for Camera File system, DPOF (version 1.1) compliant
- Focus-Area Selection AF mode and manual focus are available
- Hood
- Multi-power source for camera, Inner light lamp, TFT screen (excludes MicroDOC Basic/1D models)
- Safety Door Switch Automatically disconnects UV transilluminator, while opening the chamber door during operation

Specifications Camera:

Effective Pixels:	24.1 megapixels
Type:	TTL-CT-SIR with CMOS sensor
Lens:	Canon EF/EF-S 18-55 mm
Maximum Aperture:	f/2.8 - f/5.6
Image Resolution:	720 x 480 up to 5.184 x 3.456
Data Type Still images:	Exif 2.3 (JPEG), RAW (CR2)
Movies:	MOV (Image data: H264 ; Audio data: Linear PCM (stereo))
Filter:	Ethidium Bromide or SYBR Green (58 mm)
Inner White Light:	2 x 3 W white light LED (excl. MDOC Basic Models)
Monitor:	8" TFT liquid crystal screen
Display Format:	960 x 234 mm
Luminance:	300 cd/m ²
Display Mode:	NTSC/PAL mode switchable
Dimensions with camera (W x D x H):	290 x 325 x 515 mm
Rated Voltages:	110 - 220 V
Weight approx.:	7.7 kg

-18%

Description	PK	Cat. No.	Price	Now
			GBP	GBP
microDOC with UV-Transilluminator 254/312 nm	1	9.584 756	4,884.98	4,005.68
microDOC with UV-Transilluminator 254/365 nm	1	9.584 757	5,043.35	4,135.55
microDOC basic system with lift-off dark room hood and camera only	1	9.584 758	2,149.59	1,762.66

* incl. Analysis Software TotalLab1D.

UV Crosslinker CL-508



The UV Crosslinker is a UV irradiation system for versatile applications in the field of molecular biology, such as fixing nucleic acids on membranes and removing PCR contamination.

- Spacious stainless steel exposure chamber
- Programmable microprocessor control
- 9 preset programmes for UV dose and exposure time
- LED display and membrane keypad
- Viewing window with UV protection
- Safety interlock



Specifications

Wave length:	254 nm
Light source:	5 x 8 W bulb
Energy:	0 ... 9.999 J or 0 ... 99.99 J
Timer:	0 ... 999.9 min
Internal dimensions (W x D x H):	260 x 330 x 145 mm
External dimensions (W x D x H):	350 x 360 x 305 mm
Weight:	10 kg
Power supply:	240 V

-22%

Type	PK	Cat. No.	Price	Now
			GBP	GBP
CL-508	1	6.272 847	2,509.87	1,957.70

Colony counter, Scan® 50/Scan® 50 pro



- Intuitive Operation Ergonomic
- Automatic Tip Ejection

Manual colony counter for Petri dishes (from Ø 55 to 90 mm), PetriFilm™, MC-Media Pads™, easyPlate™ and filtration membranes. Counting is performed by a simple touch pressure and is then recorded.

- Counting buttons on both sides, for left or right-handed users
- With inclined counting surface and hand rest
- Light signal for each colony counted
- 9 different sounds and headphone connection
- Darkfield 2, high-contrast, indirect LED lighting
- Counting range 0 - 1999

Scope of supply: Colony counter Scan 50, mains cable, USB cable, black pen, manual

Scope of supply: Colony counter Scan® 50 pro, headset, power cord, USB cable, black marker pen, user manual

Dimensions (WxDxH):	273 x 295 x 151 mm
Power supply:	100 ... 240 V, 50/60 Hz
IP code:	IP 20
Warranty:	3 years

-8%

Type	Plug type	PK	Cat. No.	Price	Now
				GBP	GBP
Scan® 50	EU	1	4.688 030	965.97	888.69
Scan® 50 pro	EU	1	6.491 432	1,352.34	1,244.15
Scan® 50	UK	1	6.325 238	965.97	888.69

Pipette Fillers Profiller™ 447



Electronic pipette filler which allows longer and fatigue-free pipetting due to comfortable hand adjustment. The shape is ideal for working with glass or plastic pipettes. A powerful, quiet motor and a switch to set both aspiration and dispensing speeds enable maximal working efficiency even with large pipetting volumes.

- Powerful pump (fills 25 mL in 3 seconds)
- Comfortable finger triggers
- Low battery light
- NiMH battery rechargeable during use
- Interchangeable protection membrane filter

Scope of delivery: Pipette filler Profiller™ 447, power supply, four plug adaptors (EU, US/JP, GB, AUS/NZ), two spare hydrophobic filters (0.45 µm and 0.2 µm), bench and wall stands and instruction manual.

-30%

Type	PK	Cat. No.	Price	Now
			GBP	GBP
Profiler™ 447	1	4.665 542	319.95	223.97

LLG-Volumetric pipettes, soda glass, class AS, 1 mark, blue graduated



- DIN EN ISO 648, DIN 12687
- Conformity-certified
- With batch date identification
- Calibrated to deliver (EX)
- Ring mark and inscriptions in permanent blue enamel

-20%

Nominal capacity	Tolerance	Length	PK	Cat. No.	Price	Now
ml	± ml	mm			GBP	GBP
1	0.007	310	10	6.272 207	21.38	17.10
2	0.010	330	10	6.272 208	21.89	17.51
3	0.010	360	10	6.272 209	22.76	18.21
4	0.015	360	10	6.272 210	23.54	18.83
5	0.015	400	10	6.272 211	23.87	19.10
10	0.020	440	10	6.272 212	27.59	22.07
15	0.030	455	10	6.272 213	40.01	32.73
20	0.030	510	10	6.272 214	41.69	33.35
25	0.030	520	10	6.272 215	44.15	35.32
50	0.050	540	10	6.272 216	59.52	47.62

Pipette controller, Profiller™ manual 437



For glass and plastic pipettes with a volume of up to 100 ml.

- With a large suction ball
- Soft action lever button
- Efficient blow-out system
- PTFE protection membrane filter, exchangeable
- Alternative colour-coded cones (white, blue, green)

-25%

Description	Colour	PK	Cat. No.	Price	Now
				GBP	GBP
Pipette controller, Profiller™ manual 437	blue	1	6.320 760	52.19	39.89

LLG-Graduated pipettes, soda glass, class AS, type 3



- DIN EN ISO 835, DIN 12699
- Conformity-certified
- With batch date identification
- Calibrated to deliver (EX)
- Ring marks and graduations in permanent blue enamel

-20%

Nominal capacity	Graduations	Tolerance	Length	PK	Cat. No.	Price	Now
ml	ml	± ml	mm			GBP	GBP
1	0.01	0.007	360	10	6.272 200	12.89	10.31
2	0.02	0.01	360	10	6.272 201	12.89	10.31
5	0.05	0.03	360	10	6.272 202	13.39	10.71
10	0.1	0.05	360	10	6.272 203	15.46	12.37
20	0.1	0.1	450	10	6.272 204	22.58	26.06
25	0.1	0.1	450	10	6.272 205	33.30	26.64
50	0.1	0.2	720	10	6.272 206	108.36	86.69

Chemically-resistant Diaphragm Dosing Pumps SIMDOS® 02/10



- Application: Metering liquids
- Flow rate from 0.03 up to 100 ml/min/Pressure head 60 mWg, suction head 2 mWg and 3 mWg respectively
- Pump heads available in your choice of PP, PVDF or PTFE-diaphragms available in PTFE, valves in FFKM
- Delivery rate adjustable manually and by means of external control and including RS 232 interface
- Additional safety diaphragm for maximum security
- RC Plus control



- Additional Timer Free of Charge
- Small Size
- IP 67 Protection Class

Advantages:

- Intuitive operation, easy calibration
- Adjustable to liquid characteristics
- Self-priming and dry-running
- Spray water protected IP 65

Specifications

Pressure:	6 bar
Allowed ambient temperature:	+5 ... +40 °C
Allowed liquid temperature:	+5 ... +80 °C
Dimensions (WxDxH):	93 x 150 x 144 mm
Pump head:	optional PP, PVDF, PTFE or stainless steel
Diaphragm:	PTFE
Valves:	FFKM
Power supply:	100-240 V, 50-60 Hz
Weight:	0.9 kg



-9%

Type	Head	Flow rate	Dosing volume	Max. suction height	PK	Cat. No.	Price	Now
							GBP	GBP
SIMDOS® 02 FEM 1.02KT.18RCP	PP	30 µl/min - 20 ml/min	30 µl - 999 ml	2 m	1	7.940 190	1,888.23	1,718.29
SIMDOS® 02 FEM 1.02TT.18RCP	PVDF	30 µl/min - 20 ml/min	30 µl - 999 ml	2 m	1	6.280 030	1,974.10	1,796.43
SIMDOS® 02 FEM 1.02FT.18RCP	PTFE	30 µl/min - 20 ml/min	30 µl - 999 ml	2 m	1	6.288 412	2,927.91	2,664.40
SIMDOS® 10 FEM 1.10KT.18RCP2	PP	1 - 100 ml/min	1 - 999 ml	3 m	1	6.310 685	1,876.73	1,707.82
SIMDOS® 10 FEM 1.10FT.18RCP2	PTFE	1 - 100 ml/min	1 - 999 ml	3 m	1	6.274 454	2,948.32	2,682.97
SIMDOS® 10 FEM 1.10ST.18RCP2	stainless steel	1 - 100 ml/min	1 - 999 ml	3 m	1	6.313 297	3,704.32	3,370.93
SIMDOS® 10 FEM 1.10TT.18RCP2	PVDF	1 - 100 ml/min	1 - 999 ml	3 m	1	6.285 974	1,976.75	1,798.84

Pipette stand, vertical, PP



The pipette carousel can be rotated 360° and hold up to 94 pipettes.

-24%

Type	PK	Cat. No.	Price	Now
			GBP	GBP
Pipette stand, vertical	1	9.273 895	16.92	12.86

LLG-Pasteur pipettes, Soda-lime-glass



Single use. With long drawn, 1.1 mm diameter fine tip, 20 mm suction tube and constriction for tight fitting of cotton wool plugs. External diameter: 7.1 mm.

Please order Pipette teats separately.

-20%

Pipette teats



Natural rubber (NR)/Latex or Silicone (VMQ)

-20%

Capacity	Colour	Material	PK	Cat. No.	Price	Now
ml					GBP	GBP
2	red	NR/Latex	100	4.661 160	51.26	41.01
2	transparent/white	VMQ	10	9.072 682	15.75	12.60

Length	Acc. to	PK	Cat. No.	Price	Now
mm				GBP	GBP
150	ISO 7712	1000	9.411 015	26.35	29.08
230	ISO 7712	1000	9.411 020	37.72	30.18

Repetitive pipette HandyStep® touch/HandyStep® touch S



- Intuitive Operation
- Ergonomic
- Automatic Tip Ejection



Repetitive pipette with colour touch display and automatic tip size recognition.

HandyStep® touch with the standard modes Multi-Dispensing, Auto-Dispensing, Pipetting and Favorites
HandyStep® touch S with the additional functions of Sequential Dispensing, Multi-Aspiration and Titration

- Touchscreen operation with intuitive menu navigation and integrated help function
- Important functions and parameters visible at a glance
- Automatic tip ejection by the press of a button
- Variable volume adjustment from 1.0 µl to 50 ml
- USB-C connection for quick charging by cable
- Inductive charging with optional charging stand
- Compatible third-party tips can also be used

Scope of supply: Repetitive pipette, includes universal AC adapter (for Europe, UK, USA, Japan, Australia and New Zealand), Li-Ion battery, USB-Type C cable, shelf/rack mount, sample PD-Tips II, operating manual, performance certificate

-5%

Type	Colour	PK	Cat. No.	Price	Now
				GBP	GBP
HandyStep® touch	White	1	9.284 015	720.14	692.68
HandyStep® touch, incl. charging stand	White	1	6.275 957	805.14	764.88
HandyStep® touch S	Black	1	9.284 016	915.71	869.92
HandyStep® touch S, incl. charging stand	Black	1	6.275 958	1,011.29	960.73

Dispenser tips, PD-Tips II



Thanks to patented size coding, HandyStep® touch, HandyStep® touch S, HandyStep® electronic, Gilson® Repetman® and Rainin AutoRep™ E automatically detect the tip volume. The tips are also compatible with all other instruments of the HandyStep® family and with repetitive pipettes from other manufacturers.

- Cylinder: PP/piston: HDPE, 0.1 ml piston: LCP
- Volumes from 0.1 ml to 50 ml
- Comply with the requirements of ISO 8655
- Supplied with batch certificate
- Adapter for sizes 25 ml and 50 ml included
- PD-Tips II cannot be autoclaved; the adapters are autoclavable
- Loose-packed and not sterile

-27%

Nominal capacity ml	PK	Cat. No.	Price	Now
			GBP	GBP
0.10	100	9.280 950	78.71	57.46
0.50	100	9.280 951	70.43	51.41
1.00	100	9.280 952	70.43	51.41
1.25	100	9.280 953	70.43	51.41
2.50	100	9.280 954	70.43	51.41
5.00	100	9.280 955	70.43	51.41
10.00	100	9.280 956	70.43	51.41
12.50	100	9.280 957	70.43	51.41
25.00	50	9.280 958	39.65	28.94
50.00	25	9.280 959	21.28	15.61

Laboratory bottles, Borosilicate glass 3.3, GL45, with retrace code



DIN 168 - 1. EN ISO 4796-1.
 With graduations and retrace code, pouring ring, PP screw cap with ISO thread.
 Certificates are available on request.

-8%

Capacity ml	Ext. diam. mm	Height mm	PK	Cat. No.	Price	Now
					GBP	GBP
100	56	100	10	9.072 331	18.45	16.97
250	70	138	10	9.072 332	22.08	20.31
500	86	176	10	9.072 334	27.50	25.30
1000	101	225	10	9.072 335	44.35	40.80
2000	136	260	10	9.072 336	95.81	88.15
5000	186	330	1	9.072 337	63.11	58.06
10000	234	410	1	9.072 338	112.55	103.55

Laboratory bottles protect+ DURAN®, with retrace code



Highly transparent.
 The coating provides scratch, leak and splinter protection.

- Coating made of polyamide
- With dust cap
- Graduated
- UV protection up to approx. 380 nm
- DIN ISO 4796-1
- USP compliant

-27%

Nominal capacity ml	Neck thread	PK	Cat. No.	Price	Now
	GL			GBP	GBP
100	45	1	4.693 738	20.56	15.01
250	45	1	4.693 740	21.76	15.88
500	45	1	4.693 742	25.83	18.86
1000	45	1	4.693 744	35.59	25.98

Single channel pipette Tacta



SARTORIUS



- Optiload Function
- Completely Autoclavable



- Low force for pipetting and tip ejection
- Ergonomic design for comfortable pipetting
- Fully autoclavable without disassembling
- Materials have high chemical and UV resistance to ensure a long life span for the pipette

-23%

Capacity	Increments	Accuracy max. vol. (± R%)	Precision max. vol. (≤ CV%)	PK	Cat. No.	Price	Now
µl	µl					GBP	GBP
0.1 - 3	0.002	1.30	0.80	1	6.284 794	319.50	246.02
0.5 - 10	0.01	1.00	0.60	1	6.282 658	319.50	246.02
2 - 20	0.02	0.90	0.40	1	7.645 491	319.50	246.02
10 - 100	0.10	0.80	0.15	1	6.282 657	319.50	246.02
20 - 200	0.20	0.60	0.15	1	7.645 492	319.50	246.02
100 - 1000	1.00	0.70	0.20	1	6.282 656	319.50	246.02

LLG-Labware pipette tips, economy 2.0, PP



The new generation of LLG Labware Pipette tips economy. Compatible with all common pipette brands. You can find the appropriate compatibility list on www.llg-labware.com in the Downloads section.

- Improved optical clarity and pipette fit
- Autoclavable
- DNase and RNase free

-40%

Capacity	Colour	Package contents	PK	Cat. No.	Price	Now
µl					GBP	GBP
0.1 ... 10	transparent	10 x 96 tips in rack	960	4.668 776	53.19	31.91
0.1 ... 10	transparent	10 x 96 tips in rack	960	6.491 406	53.19	31.91
1 ... 200	transparent	10 x 96 tips in rack	960	4.668 778	53.37	32.02
1 ... 200	yellow	10 x 96 tips in rack	960	4.668 779	53.37	32.02
100 ... 1000	transparent	8 x 96 tips in rack	768	4.668 782	39.33	23.60
100 ... 1000	blue	8 x 96 tips in rack	768	4.668 783	39.33	23.60

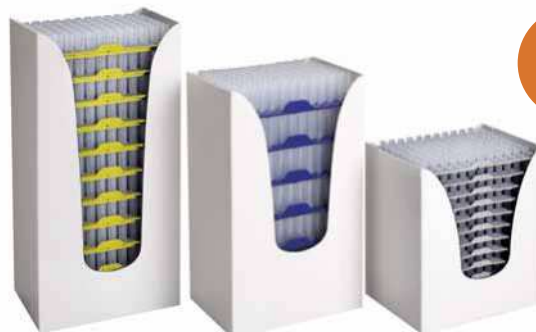
LLG-Pipette tips Low Retention, PP, reload



- Compatible with all LLG-Labware Boxes
- Environmentally Friendly



New



Environmentally friendly and cost-effective refill system for pipette tips for use with the separately available reusable LLG-Pipette tip box. The reload system saves space, reduces plastic waste, and is characterised by safe and easy handling. The pipette tips have a hydrophobic inner surface and ensure maximum sample recovery and high-precision pipetting.

- Colour-coded racks facilitate tip identification
- With volume graduation
- DNase- and RNase-free
- Autoclavable

For research and development only.

Please order pipette tip boxes or economy 2.0 pipette tips in racks separately.

-59%

Capacity	Length	Colour	PK	Cat. No.	Price	Now
µl	mm				GBP	GBP
10	31.2	transparent	960	4.694 453	40.50	16.61
10	45.8	transparent	960	4.694 454	40.50	16.61
200	53.4	transparent	960	4.694 455	40.50	16.61
1000	84.3	transparent	480	4.694 456	30.33	12.44

LLG-Pipette tip box



For Reload System and Bagged Tips



New



The empty, refillable pipette tip box in 8 x 12 format can be filled with the reload tip racks of the LLG-Pipette tips Low Retention.

- Easy opening and closing of the container with one hand
- Secure rack box closing
- Stackable
- Autoclavable

-8%

For tips	PK	Cat. No.	Price	Now
			GBP	GBP
10 µl/10 µl XL	10	4.694 461	13.41	12.34
200 µl	10	4.694 462	13.41	12.34
1000 µl	8	4.694 463	16.70	15.36

LLG-Laboratory and hygienic tissues, 2-ply, 150 wipes



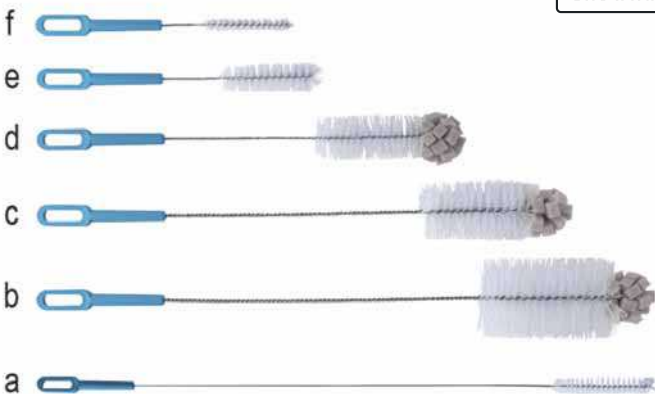
Laboratory and hygienic tissues in dispenser box
 - Contains 150 white, double-ply tissues, 210 x 220 mm
 - Highly absorbent and ultra-soft
 - For sensitive application areas

Carton of 30 boxes with 150 wipes

-20%

Package contents	PK	Cat. No.	Price	Now
			GBP	GBP
Carton of 30 boxes with 150 wipes	30	9.413 220	56.82	45.46

LLG-Cleaning brushes



Excellent tools for washing and cleaning all types of laboratory bottles, flasks, tubes, condensers, burettes, etc. Brush material is manufactured from the highest quality of fibre/person for a long life cycle. Brush stem is manufactured from corrosion-proof twisted steel wire. The brush handle is manufactured from polypropylene and offers extremely easy handling and use of the brush. The unique handle design enables the hanging of the brush to a convenient place for easy reach. The spherical sponge top part enables access to every corner of the labware and guarantees perfect cleaning results.

-20%

For	Description	Length	Figure	PK	Cat. No.	Price	Now
		mm				GBP	GBP
burettes and tubings	20 x 125 mm	845	a	10	6.267 293	35.02	28.02
large size bottles	70 x 130 mm	460	b	10	6.267 294	29.70	23.76
medium size bottles	50 x 110 mm	460	c	10	6.267 295	30.58	24.46
small size bottles	40 x 110 mm	380	d	10	6.267 296	27.76	22.21
test tubes	25 x 100 mm	295	e	10	6.267 297	22.05	17.64
narrow test tubes	12 x 80 mm	235	f	10	6.267 298	22.01	17.61

LLG-Wipe rolls of 102 sheets, 3-ply



Proven Quality



Roll with 102 sheets (220 x 260 mm).
 - strong when wet
 - absorbent
 - low lint

-20%

Package contents	PK	Cat. No.	Price	Now
			GBP	GBP
Roll of 102 tissues	2	9.413 224	4.68	3.74
Roll of 102 tissues	30	4.679 906	62.72	50.98

Wipes Multiclean®, 3-ply



- High Wet Strength
 - Bulk Pack
 - Different Sizes



Handy cleaning cloths, resistant and with high wet strength, they are ideal for light and coarse dirt work. The appropriate holder, whether as a floor stand or for wall mounting is available on request.

-21%

Width	Length	Weight	Package contents	PK	Cat. No.	Price	Now
mm	mm	g / m ²				GBP	GBP
220	380	60	2 rolls with 500 tears	2	7.618 013	27.94	22.07
360	380	54	2 rolls with 500 tears	2	7.618 212	40.15	31.72
360	380	54	Roll with 1000 tears	1	7.671 903	37.37	29.52



LLG-Disposable Gloves *ergo*, Nitrile, Powder-Free

EN ISO 374-1 Type B EN ISO 374-5 EN 420



! Topseller

The *ergo* disposable, protective, nitrile gloves combine the comfort and "feel" of latex with the physical and chemical endurance of nitrile, with no risk of allergies. The ideal glove for all applications requires high tactile sensation and protection against chemicals.

- **Thin - very comfortable to wear**
- Excellent tactile sensitivity - similar to latex
- Tried and tested quality products made of nitrile
- Excellent resistance to skin irritants in foodstuffs
- Free from phthalates/softeners and allergenic latex proteins
- Colour: Lavender Blue
- Suitable for areas subject to HACCP standards
- **Cat. III low chemical resistance. AQL 1.5**

According to EN ISO 374-1:2016/Type B, EN ISO 374-5:2016, EN 420 is Suitable for food handling. You can find the appropriate compatibility list on www.llg-labware.com in the Downloads section.

Outside: textured fingers
 Inside: powder-free halogenated
 Thickness (measured in double layer): **0.12 mm**

Size	PK	Cat. No.	Price	Now
			GBP	GBP
XS	200	9.006 370	11.83	8.87
S	200	9.006 371	11.83	8.87
M	200	9.006 372	11.83	8.87
L	200	9.006 373	11.83	8.87
XL	180	9.006 374	11.83	8.87

-25%

LLG-Safety Eyeshields *classic*



- CE approved EN166 and EN170
- Integrated side lenses with vents, 180° field of vision
- Frame made of tested hypo-allergenic material
- Side arms adjustable in length and inclination
- 100% UV protection (up to 380 nm)
- Weight: 34 g only

Colour	Lens	PK	Cat. No.	Price	Now
				GBP	GBP
Blue	Clear, anti-scratch lens, 2C-1.2 U 1 F CE	1	9.006 001	3.56	2.60

-27%

LLG-Disposable Gloves *classic*, Latex

EN ISO 374-1 Type C EN ISO 374-5 EN 420



! Proven Quality

The ideal glove for all applications which require a high tactile sensitivity.

- Skin-friendly
- Powder-free
- Excellent tactile sensitivity
- High durability due to special formulation
- **Cat. III Low Chemical resistance. AQL 1.5.**
- Thiuram-free, reduced risk of contact eczemas

According to EN ISO 374-1:2016/Type C, EN ISO 374-5:2016, EN 420 is Suitable for food handling. You can find the appropriate compatibility list on www.llg-labware.com in the Downloads section.

Outside: textured fingers
 Inside: powder free
 Thickness (measured in double layer): 0.20 mm

Size	PK	Cat. No.	Price	Now
			GBP	GBP
S	100	9.006 383	8.65	6.31
M	100	9.006 384	8.65	6.31
L	100	9.006 385	8.65	6.31
XL	90	9.006 386	8.65	6.31

-27%

LLG-Disposable Visitor Gowns, PP



White PP nonwoven 30 g/m², universal size with shirt collar and elastic at the wrists, latex-free, without pocket, 4 push buttons

Description	PK	Cat. No.	Price	Now
			GBP	GBP
LLG-Visitors gown	50	6.282 796	38.83	31.06

-20%

LLG-Electrode stand for 3 electrodes



With cable duct. For three electrodes, 3 openings with diam. 16 mm. Additional opening for a temperature sensor. Three joints for high flexibility and adjustment options.

Base plate: 105 x 125 mm
 Base plate weight: 0.7 kg
 Max. arm height: 320 mm

-20%

Type	PK	Cat. No.	Price	Now
			GBP	GBP
LLG-Electrode stand	1	6.286 248	83.83	67.06

LLG-Universal indicator paper, rolls



For the determination of pH values.
 Plastic dispensing reel with 1 roll of 5 m.

-27%

Range	Description	PK	Cat. No.	Price	Now
pH				GBP	GBP
1 ... 11	Dispensing reel with 1 roll	1	9.129 800	3.80	2.77
1 ... 14	Dispensing reel with 1 roll	1	9.129 802	3.80	2.77
1 ... 11	Refill packs with 3 rolls	3	9.129 801	8.12	5.93
1 ... 14	Refill packs with 3 rolls	3	9.129 803	8.12	5.93

pH combination electrode, gel electrolyte, SenTix®



Basic pH combination electrodes, with plastic body, gel reference system. SenTix 21-3 and SenTix 41-3 with 3 m fixed cable.

Specifications

Temperature range: 0 ... 80 °C
 pH range: 0 ... 14 pH
 Length/diam.: 120 mm/12 mm
 Electrolyte: Gel
 Diaphragm: Fibre
 Membrane shape: Cylindrical
 Membrane resistance at 25°C: 1 GΩ
 Plug: DIN, waterproof

-14%

Type	Temperature sensor	Cable	PK	Cat. No.	Price	Now
		m			GBP	GBP
SenTix® 21	-	1	1	9.040 872	143.10	123.07
SenTix® 21-3	-	3	1	9.040 873	182.70	157.12
SenTix® 41	NTC 30 kΩ	1	1	9.040 876	216.90	186.53
SenTix® 41-3	NTC 30 kΩ	3	1	9.040 877	259.20	222.91

Technical buffer solutions



Identified by colour-coded labels.
 Tolerance ±0.03 pH.

-22%

pH-value at 25 °C	Capacity ml	PK	Cat. No.	Price	Now
				GBP	GBP
4.01	250	1	9.040 727	45.30	11.93
4.01	1000	1	9.040 722	43.20	33.70
7.00	250	1	9.040 728	45.30	11.93
7.00	1000	1	9.040 723	43.20	33.70
10.01	250	1	7.401 072	45.30	11.93
10.01	1000	1	9.040 725	43.20	33.70

Pocket Tester SD10 pH/SD40 Multi



SD10 pH: Pocket Tester with waterproof housing for measuring pH, mV, and temperature. Ideal for regular checks in industrial plants or swimming pools. With lanyard and clip on the device head.

SD40 Multi: Pocket Tester with waterproof housing for measuring pH, conductivity, TDS, salinity, and temperature. Ideal for regular checks in industrial plants or swimming pools. With lanyard and clip on the device head.

- Three-colour LED lighting system (blue, green, red) and display symbols for easy handling
- 3 multifunction buttons with symbols
- Up to 3 calibration points
- With stability indicator, alarm for limits, auto-hold, and auto-off function
- Transparent lid for measurement, calibration, and storage of the electrode
- Optimised lid design for an upright and stable position of the tester
- Battery operation (4 x AAA batteries)
- Easy battery and electrode replacement

Specifications

	SD10 pH SD40 Multi
pH measuring range:	0.00 ... 14.00
Resolution:	0.01
Accuracy:	±0.01 (±1 digit)
Conductivity:	- 0.01 ... 20.00 mS/cm
mV measuring range:	-1000 ... 1000 mV
Resolution:	1 mV 0.1 µS/cm, 1 µS/cm, 0.01 mS/cm
Accuracy:	±0.2% FS ±1% FS
TDS:	- 0.01 ... 20.00 ppt
Resolution:	- 0.1 ppm, 1 ppm, 0.01 ppt
Dimensions (WxDxH):	40 x 180 x 40 mm
Permissible ambient temperature:	0 ... 60 °C
Max. relative humidity:	80%
Protection class:	IP 67
Weight:	151 g

-10%

Type	PK	Cat. No.	Price	Now
			GBP	GBP
SD10 pH	1	4.694 724	122.40	110.16
SD40 Multi	1	4.694 730	166.50	149.85

LLG-pH Meter 5



The LLG-pH meter 5 is a very easy-to-use pH/mV/°C handheld meter.

- Gel-filled pH electrode with an external temperature sensor with a 1 m cable
- BNC connector
- Automatic temperature compensation (ATC)
- Large, easy-to-read LCD display
- 3 point calibration
- Suitable for all standard SD cards with up to 16 GB

Please order batteries separately (6 x 1.5 V AA)

Scope of supply: pH meter, pH electrode with temperature sensor, buffers pH 4 and pH 7, 4 GB SD-Memory card, transport case

Specifications

Measuring range pH:	0 ... 14
pH resolution:	0.01
pH accuracy:	±0.02 + 2d
Ambient conditions:	0 ... 50 °C, max. 85% r.H.
Temperature range electrode:	0 ... 60 °C
Dimensions (W x D x H):	68 x 177 x 45 mm
Weight:	490 g
Power supply:	6 x 1.5 V AA batteries/ 9 V mains adapter (optional)
IP code:	IP 51
Warranty:	3 years (1 year on the electrode)

-16%

Type	PK	Cat. No.	Price	Now
			GBP	GBP
LLG-pH Meter 5	1	6.263 691	203.72	171.17

pH meter SevenDirect™ SD20-Kits

For an easy start, choose one of our ready-to-use kits which includes the pH meter, an application-specific sensor and calibration standards.

pH electrode InLab® Expert Pro-ISM with robust PEEK shaft, integrated NTC 30 kΩ temperature sensor and ARGENTAL™ reference system. The electrode is always ready for use as the solid XEROLYT® reference electrolyte does not need to be refilled.

Scope of supply: pH meter SevenDirect™ SD20, electrode arm EasyPlace™, pH electrode InLab® Expert Pro-ISM, 3 x 2 calibration buffer sachets pH 4.01, 7.00 and 9.21 or 10.01, protective cover, power supply, get-started-guide

Specifications

pH range:	-2.000 ... 20.000
Accuracy:	±0.002
Resolution:	0.1/0.01/0.001
Temperature range:	-30 ... 130 °C
Accuracy:	±0.1 (0 ... 100 °C)
Protection class:	IP 54



-21%

Type	PK	Cat. No.	Price	Now
			GBP	GBP
SD20-Kit	1	4.684 936	1,273.50	1,006.07

Refrigerated/heated circulating baths ecocoolR



Environmentally Friendly Coolant

Consisting of two models, all products in the ecocoolR range are supplied assembled as ready to use kits, complete with accessory hoses, clips and connectors as standard.

- Choice of two models, temperature range -25 °C to 150 °C (model dependent)
- 3 year warranty with Grant renowned service and support, no registration required
- Active cooling through the whole temperature range
- True energy saving of up to 80% against standard compressor units
- Thermostat and chiller work in harmony, neither will operate alone, eliminating any danger of overheating or freezing
- Single front switch for user convenience
- Modern, sleek, attractive design



ecocool 150R

Specifications

	ecocool 100R ecocool 150R
Volume:	5 L 6 L
Heating capacity:	2160 W 2280 W
Cooling capacity kW at 20/0/-20 °C:	0.25/0.2/0.05 0.45/0.35/0.2
Max. Temperature range:	-20 ... 100 °C -25 ... 150 °C
Dimensions (W x D):	150 x 120 mm

-6%

Type	PK	Cat. No.	Price	Now
			GBP	GBP
ecocool 100R	1	4.685 694	3,775.50	3,548.97
ecocool 150R	1	4.685 695	4,626.00	4,348.44

Metal-cased heating mantles series KM-M, without controller



LabHEAT® - Heating mantles for flasks, round bottom. Flexible glass yarn heating element in a plastic-coated, chemical-resistant metal housing with built-in power-on and heating zone switch; max. heating element temperature 450 °C; 1.5 m power supply (earthed) cable and RCD (residual current detection); nominal voltage 230V AC.

-26%

Capacity	Flask diam.	Rating	Heating zones	PK	Cat. No.	Price	Now
ml	mm	W				GBP	GBP
100	64	100	1	1	9.642 501	260.10	192.47
250	85	150	2	1	9.642 502	264.60	195.80
500	105	200	2	1	9.642 503	276.30	204.46
1000	131	300	2	1	9.642 504	295.20	218.45
2000	166	500	2	1	9.642 505	341.10	252.41
3000	185	600	2	1	9.642 506	374.40	277.06
4000	207	750	2	1	9.642 507	487.80	360.97
5000	223	860	2	1	9.642 508	530.10	392.27
6000	236	1000	2	1	9.642 509	600.30	444.22

Serial heating units and Heating mantles with other specifications available on request.

Water baths PURA™



Flexible in use for all purposes in research and quality control. All PURA™ water baths (except PURA™ 4) have an integrated drain screw. The bright, easy-to-read white LED display is visible, even from a distance. With integrated side recessed grips for easy transport and non-slip rubber feet for safe standing.

- Including platform
- Integrated timer
- Bright display with membrane keypad
- Splash-proof
- Built-in dry-running protection

Please order bath cover separately.

Working temperature range:	18 ... 99.9 °C
Temperature stability:	±0.15 °C
Power supply:	230 V, 50 ... 60 Hz

-5%

Type	Capacity of the bath	External dimensions (W x D x H)	PK	Cat. No.	Price	Now
	litres	mm			GBP	GBP
PURA™ 4	0.8 ... 4.5	210 x 350 x 220	1	4.667 880	783.90	744.71
PURA™ 10	1.4 ... 9.5	310 x 350 x 220	1	4.667 881	899.10	854.15
PURA™ 14	2.0 ... 14.0	420 x 350 x 220	1	4.667 882	930.60	884.07
PURA™ 22	3.4 ... 25.5	640 x 350 x 260	1	4.667 883	1,022.40	971.28
PURA™ 30	4.8 ... 36.0	860 x 350 x 260	1	4.667 884	1,227.60	1,166.22

Lids for Water baths, PURA™



Hinged bath cover.

-5%

For model	PK	Cat. No.	Price	Now
			GBP	GBP
PURA™ 4	1	9.857 931	137.70	130.82
PURA™ 10	1	9.857 932	173.80	164.16
PURA™ 14	1	9.857 933	183.60	174.42
PURA™ 22	1	9.857 934	224.10	212.90
PURA™ 30	1	9.857 935	270.90	257.36

LLG- Floating pellets, PP



Pellets with 20 mm diameter. Can cover 0.1 m². Protect against evaporation and rapid temperature loss. Decreases hazardous vapors. Resistant against most acids, bases, solvents and mineral oils. Temperature stable up to 100 °C.

-20%

Description	PK	Cat. No.	Price	Now
			GBP	GBP
Floating pellets	250	6.266 611	32.32	25.86



Quality Made in EU



Ultra-low temperature upright freezers ULT series, up to -86 °C

Compact ultra-low temperature freezer for temporary to long-term cold storage of biological samples.

- Temperature logger with USB port
- Battery backup for 48 h
- Digital controller with display
- High/low temperature alarm
- Audible and visual alarm
- Contact for remote alarm
- Porthole for external probe and CO₂ backup
- Eco-friendly, HCFC-free Nature R refrigerant

Type designation -PLUS: With extended exchange warranty. In warranty cases which cannot be solved quickly on site, the client receives a new device.



Specifications

Temperature range: -86 ... -60 °C
 Temperature probes: 1 x PT 1000
 Power supply: 230 V, 50 Hz

-5%

Type	Capacity	External dimensions (W x D x H) mm	Internal dimensions (W x D x H) mm	Weight kg	PK	Cat. No.	Price	Now
	Litres						GBP	GBP
ULT U35	37	630 x 675 x 650	439 x 271 x 433	59	1	6.322 824	4,860.00	4,617.00
ULT U35-PLUS	37	630 x 675 x 650	439 x 271 x 433	59	1	6.490 712	7,142.40	6,785.28
ULT U100	93	595 x 630 x 825	430 x 425 x 625	60	1	4.672 408	4,491.00	4,266.45
ULT U100-PLUS	93	595 x 630 x 825	430 x 425 x 625	60	1	4.672 428	6,290.10	5,975.60

Ultra-low temperature chest freezers ULT series, up to -86 °C

Ultra-low temperature freezer for temporary to long-term cold storage of biological samples. Ideal for daily use in laboratories and scientific facilities.

- Digital controller with display
- Audible and visual alarm
- High/low temperature alarm
- Contact for remote alarm
- Battery backup for 48 h
- Porthole (Ø12 mm) for external probe and CO₂ backup
- Integrated lock
- With 4 castors
- Eco-friendly, HCFC-free Nature R refrigerant



Specifications

Internal humidity: -86 ... -60 °C
 Temperature probes: 1 x PT 1000
 Power supply: 230 V, 50 Hz

-5%

Type	Capacity	External dimensions (W x D x H) mm	Internal dimensions (W x D x H) mm	Weight kg	PK	Cat. No.	Price	Now
	Litres						GBP	GBP
ULT C75	71	555 x 630 x 630	387 x 387 x 465	45	1	4.672 404	3,675.60	3,491.82



Telescopic Rods, aluminium



The individual rods have been provided with an end stop. This means that one rod cannot accidentally slip out of another rod. The telescopic rods cannot be rotated radially.

- Increased rigidity by using a cold-rolled profile rod
- Springs made of stainless steel

-22%

Length	PK	Cat. No.	Price	Now
m			GBP	GBP
0.65 ... 1.20	1	9.303 800	25.34	19.77
0.70 ... 1.80	1	6.266 590	42.89	33.45
1.25 ... 2.50	1	9.303 802	32.45	25.31
0.95 ... 2.80	1	9.303 801	50.63	39.49
1.15 ... 3.00	1	9.303 804	50.63	39.49
1.65 ... 4.50	1	9.303 806	70.65	55.11
1.75 ... 6.00	1	9.303 807	86.67	67.60

Sampling lance milky, stainless steel V4A, acc. to EN ISO 707



Universal powder and granules sampler collector made of AISI 316 stainless steel. Developed especially for milk powder samples, conforms to the standards of DIN and IDF (Int. Dairy Federation). The collector is inserted into bags or casks and the sample is removed using a semi-circular profile lance. Autoclavable.

-25%

Capacity	Length	Imm. depth	Ext. diam.	PK	Cat. No.	Price	Now
ml	cm	mm	mm			GBP	GBP
150	48	385	28	1	6.051 629	184.60	138.45

Angular, sample beakers, angled for TeleScoop, PP



With individually variable angle adjustment.

-24%

Capacity	Material	PK	Cat. No.	Price	Now
ml				GBP	GBP
600	PP	1	9.303 810	48.02	36.50
2000	PP	1	9.303 814	53.87	40.94

Bottle holder for TeleScoop, PP/PA



Holds bottles up to max. 88mm diameter incl. 750 ml bottle (Spare bottle Cat. No. 9.072 987). Suitable for plastic and glass bottles. With a universal quick-action clamping strap.

-25%

Type	PK	Cat. No.	Price	Now
			GBP	GBP
Bottle holder	1	9.303 830	56.03	42.02

Anti-tamper seal-it, self-adhesive roll



If a container opening is sealed with seal-it, the container cannot be opened without destroying the seal-it label. The white labelling field of seal-it can be written on with all conventional writing instruments.

- Clear identification via numbers in sequence
- Integrated control label with the same number, for accompanying documents
- 500 consecutively numbered labels in each roll
- Format 178 mm long, 30 mm wide
- Tear-off perforation for each label

-19%

Type	PK	Cat. No.	Price	Now
			GBP	GBP
Seal-it	500	7.622 477	131.36	106.40

Grinding mill, A11 basic



Batch mill for 2 different grinding procedures:
Impact grinding of hard, brittle or non-elastic grinding materials with a high-grade stainless steel beater. This beater can be used for a Mohs hardness up to 6 (incl. with delivery). Cutting grinding for pulverizing soft, fibrous materials with a cutting blade (not incl. with delivery).

- Moist and gluey materials can be pulverized by adding water
- Grinding chamber made of Tefcel (PTFE, glass fibre-reinforced) with stainless steel inlet (1.4571), useful volume 80 ml (incl. with delivery). For embrittlement of grinding materials with liquid nitrogen in the grinding chamber

Specifications

Motor rating input/output:	160/100 W
Speed:	28000 rpm (off load)
Chamber vol.:	80 ml
Power-on time ON/OFF:	1/10 min
Auto power off:	yes
Tangential speed:	53 m/sec.
Max. sample granule size:	10 mm
Dimensions (W x D x H):	85 x 85 x 240 mm
Weight:	1.5 kg
IP code:	IP 43
Supply requirements:	230 V 50/60 Hz
Tested to DIN EN IEC 61010-1.	

-14%

Type	Max. speed	Max. Feed quantity/ Flow rate	Plug type	PK	Cat. No.	Price	Now
	rpm	ml				GBP	GBP
A 11 basic	28000	80	EU	1	9.737 801	2,521.80	2,168.75
A 11 basic	28000	80	UK	1	6.202 305	2,521.80	2,168.75
A 11 basic	28000	80	CH	1	4.008 002	2,521.80	2,168.75

Accessories please order separately.

Accessories for Grinding mill, A11 basic



A 11.2 Cutter: For pulverising soft, fibrous grinding materials.

A 11.3 Beater, hard metal: For pulverising substances with a Mohs hardness up to 9, chrome-carbide coated

A 11.4 Grinding container, 250ml: Made of polycarbonate with stainless steel inlet. Not suitable for cooling with N₂, only applicable with double beater A 11.6.

-14%

Type	Description	PK	Cat. No.	Price	Now
				GBP	GBP
A 11.2	Cutter	1	9.737 806	187.20	160.99
A 11.3	Beater	1	9.737 807	234.00	201.24
A 11.4	Grinding container, 250 ml	1	9.737 805	630.90	542.57

Ultrasonic homogeniser SONOPULS HD 5020, complete set



Complete Set

New



For volumes from 0.1 to 25 ml (depending on the sonotrode used).

Ready-to-operate set for volumes from 0.1 to 10 ml consisting of:

- Ultrasound generator GM 5000
- Ultrasonic converter UW 5020
- Sonotrode MS 1.5, Ø 1.5 mm

Specifications

HF-Generator	GM 5000
Dimensions (W x D x H):	195 x 385 x 215 mm
Converter	UW 5020
Dimensions (Ø x L):	50 x 150 mm
Ultrasonic nominal power:	max. 20 W
Working frequency:	40 kHz
Power supply:	90 ... 250 V, 50/60 Hz

-13%

Type	Plug type	PK	Cat. No.	Price	Now
				GBP	GBP
SONOPULS HD 5020	EU	1	4.686 319	3,696.62	3,216.06

Stand (4.672 126) and processing vessel are not included.

Temperature probe TM 5000



The temperature probe can be connected to the socket of the ultrasonic transducer.

Specifications

Diam. Probe Shaft Tip:	1.9 mm
Length Probe shaft:	150 mm
Temp. range:	-10 ... 125 °C

-19%

Type	PK	Cat. No.	Price	Now
			GBP	GBP
TM 5000	1	6.323 235	336.44	272.49

LLG-2in1 KITs with Short Thread Vials ND9



2in1 KITs contain 100 vials (1.5 ml) and 100 closures in an orange PP Box.

-20%

Description	Cover type	PK	Cat. No.	Price	Now
				GBP	GBP
clear	Short Thread Cap, blue, hole, Silicon white / PTFE red	100	9.003 560	32.01	25.61
clear	Short Thread Cap, blue, hole, Silicon white / PTFE blue, slitted	100	7.621 765	41.38	33.10
clear	Short Thread Cap, transparent, hole, Silicon white / PTFE red	100	9.003 561	31.07	24.86
clear, labelling field	Short Thread Cap, blue, hole, Silicon white / PTFE blue, slitted	100	9.003 562	43.06	34.45
clear, labelling field	UltraClean Short Thread Cap, blue, hole, Silicon white / PTFE red	100	7.970 892	32.64	26.11
amber, labelling field	UltraClean Short Thread Cap, blue, hole, Silicon white / PTFE red	100	6.266 871	33.91	27.13

Tubing, PEEK



For use in LC, LCMS and automation technology. The polyetheretherketone (PEEK) tubing is a flexible alternative to stainless steel tubing in high-pressure applications.

- Smooth inner surface
- Good chemical resistance
- Bio-inert and biocompatible
- Operating temperature up to max. 100 °C
- Pressure stable up to 483 bar (7000 psi, 48000 kPa)

-21%

Int. diam. mm	Ext. diam. mm	Length m	Colour	PK	Cat. No.	Price	Now
						GBP	GBP
0.13	1.6	1.5	red	1	4.662 782	24.57	19.41
0.18	1.6	1.5	yellow	1	4.662 783	24.57	19.41
0.25	1.6	1.5	blue	1	4.662 784	17.73	14.01
0.13	1.6	3	red	1	4.662 785	48.69	38.47

Accessories for PEEK Tubing



Fingertight fittings for HPLC tubing made of PEEK.

-21%

Type	Pressure max. bar	PK	Cat. No.	Price	Now
				GBP	GBP
1/16" ... 10-32 UNF	345	10	4.664 157	101.16	79.92
1/32" ... 10-32 UNF	345	10	4.664 159	104.49	82.55

b.safe caps, GL45, PP/PPS, PFAS Analytic



Ideal for PFAS-Analysis



Screw caps, with freely movable insert made of PP, with female threads UNF 1/4" 28G, for connecting capillary tubing (O.D. 3.2 mm) and a b.safe air valve. Free from polyhaloolefins.

- Insert made of PP
- Fittings made of PE
- Ideal for PFAS analysis

Scope of supply: Cap, fittings (PE), blind fittings (PE), air valve with service life indicator

Capillary connections: 3
Quantity of fittings: 3 x 3.2 mm
Quantity of blind fittings: 2
Neck thread: GL 45

-14%

Type	PK	Cat. No.	Price	Now
			GBP	GBP
b.safe-Cap	1	4.694 468	103.36	88.89

Ultrapure water system
Ultra Clear™ TP ED Polisher



- Large Touch Display
- For Demineralised Water



The Ultra Clear™ TP ED Polisher models are designed for deionised water feed at conductivity < 20 µS/cm and deliver up to 2 l/min ultrapure water.

- 7" Multi-color touch display
- For deionised water with max. 20 µS/cm
- TOC oxidation and monitoring (TM)
- User-guided, integrated disinfection mode
- Temperature compensation can be switched off
- Energy saving mode
- Wall mounting possible
- Modbus connectivity
- USB, printer and SD card connection

Scope of supply: ultrapure water system, 1 set of modules and filters

Specifications

TOC value:	< 3 ppb
Conductivity:	0.055 µS/cm
Ultra pure water output:	up to 2 l/min
Resistance:	18.2 MΩ-cm
Bacteria:	< 0.1 KbE/ml
Particle > 0.2 µm/ml:	< 1
Weight:	23 kg
Rating:	225 W
Supply requirements:	100 ... 240 V, 50/60 Hz

-6%

Type	PK	Cat. No.	Price	Now
Ultra Clear™ TP ED UV	1	4.683 652	6,059.70	5,696.12

Water, ultra pure



Water for a variety of applications in analytical chemistry.
H₂O - LF < 1 µS/cm - 0.4 µm, UV filtrated.

-31%

Type	Nominal capacity ml	PK	Cat. No.	Price	Now
Water, ultra pure	5000	1	4.675 028	13.77	9.50

Distilled water



Deionized and UV irradiated. Acc to DIN 43530/EN 385.
In plastic canister.

Specifications

pH value:	<7.0
Conductivity:	<5 µS/cm
Hardness:	<0.02 mmol/l
Chlorine content:	<2 mg/l

-6%

Capacity	PK	Cat. No.	Price	Now
L			GBP	GBP
10.0	1	6.273 852	9.29	8.65
20.0	1	6.280 900	18.53	17.42

Desiccator cabinets, vacuum



Vakuu 2

Solid walls of 25 mm thickness, circular silicone gasket, vacuum gauge, Vakuu 1 including two shelves, usable with up to three shelves, Vakuu 2 including three shelves, usable with up to five shelves, and Vakuu 3 including four shelves, usable with up to seven shelves.

- Clear acrylic panels, the interior is visible from all sides
- Circular silicone seal
- Variable height shelves
- Vacuum gauge (0 to 760 mm of mercury)
- Vacuum up to 0.0001 Torr
- Two needle valves with O.D. 9.0 mm

Specifications

Usable volume/Total volume: 18 l/25 l/32 l
 Maximum all-over load per shelf: 9 kg
 Total all-over load: 30 kg/40 kg/50 kg

Type	Internal dimensions (W x D x H) mm	External dimensions (W x D x H) mm	PK	Cat. No.	Price	
					GBP	Now GBP
Vakuu 1	260 x 260 x 260	300 x 300 x 340	1	9.042 002	4,922.40	4,233.26
Vakuu 2	260 x 260 x 360	300 x 300 x 440	1	9.042 003	5,507.15	4,736.15
Vakuu 3	265 x 260 x 460	315 x 310 x 550	1	9.042 004	6,698.47	5,760.68

-14%

Water jet pump, nickel-plated



Nickel-plated brass, non-return valve, with connection for quick coupling.

Description	Thread	Weight g	PK	Cat. No.	Price	
					GBP	Now GBP
Water jet pump	G 1/2	188	1	9.303 000	67.01	51.60
Quick coupling for water jet pump			1	9.303 001	19.13	14.73

-23%

Diaphragm pumps chemistry design, ME 1C

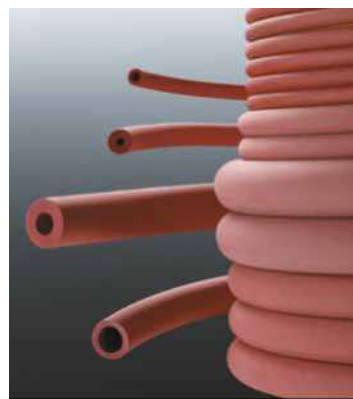


Thanks to their user-friendly functionality, compactness and high performance, the ME 1C diaphragm pumps are the perfect partner for single filtration and multiple suction devices. Single-stage diaphragm pumps are ideal for continuous, oil-free pumping of gases with low vacuum requirements. In chemical diaphragm pumps ("C"), the pumped gases and vapours only come into contact with chemical-resistant fluoroplastics. An optional vacuum fine adjustment head with a manual control valve and pressure gauge allows infinitely variable adjustment of the effective pumping speed and the ultimate vacuum.

Type	Flow rate (50/60 Hz) L / min.	Ultimate vacuum without / with gas ballast mbar	Connector	PK	Cat. No.	Price	
						GBP	Now GBP
ME 1C	11.66 / 14.16	100	CEE	1	9.880 934	886.50	824.45
ME 1C	11.66 / 14.16	100	CH	1	9.880 935	886.50	824.45
ME 1C	11.66 / 14.16	100	UK	1	9.880 936	886.50	824.45

-7%

Vacuum tubing, rubber (NR)



Red. Durometer 45 Shore A. Supplied: 1 x 10 metres.

Int. diam. mm	Wall thickness mm	PK	Cat. No.	Price	
				GBP	Now GBP
6	5	10	9.205 812	59.79	47.83
7	4	10	4.679 012	57.38	45.90
8	5	10	9.205 814	78.59	62.87

-20%

Precision balance PCJ, IoT-Line



- LIMS Connection
- Large Display

New

PCJ 600-2M

The KERN Universal Port (KUP) permits the connection of an external KUP interface adapter, such as RS-232, USB, Bluetooth, WiFi or Ethernet, for the exchange of data and control commands, without any installation outlay. Data query and remote control of the balance via computer or CRM/ERP systems using KERN Communication Protocol.

- Backlit LCD, digit height 21 mm
- Alibi memory for paperless archiving of weighing results
- Internal adjustment using the rotary control on the side
- The balance can be adjusted in battery operation
- Connection to laboratory information systems (LIMS)
- GLP/ISO record
- Battery operation, 4 x 1.5 V AA standard, operating time up to 20 h
- Permissible ambient temperature 15-35 °C

Scope of supply: Precision balance, protective working cover, hook for underfloor weighing

Specifications

Max. load:	600 g
Readability:	0.01 g 0.1 g
Reproducibility:	0.01 g 0.1 g
Linearity:	±0.03 g ±0.3 g
Weighing plate (WxD):	130 x 130 mm 150 x 170 mm
Dimensions (WxDxH):	163 x 245 x 80 mm
Power supply:	100 ... 240 V AC, 50/60 Hz
Weight:	2.0 kg 2.8 kg

-24%

Type	PK	Cat. No.	Price	Now
			GBP	GBP
PCJ 600-2M	1	6.326 962	387.00	294.12
PCJ 6000-1M	1	6.326 961	396.00	300.96

Balance bench with granite slab

**KERN**

Designed to absorb shocks and vibrations that would otherwise falsify the weighing result. With a granite stone plate supported on rubber elements, which serves as a standing surface for an analytical balance. The worktop encloses the stone plate and offers many storage options.

Specifications

Dimensions (W x D x H):	768 x 648 x 800 mm (height adjustable)
Dimensions granite slab (W x D x H):	410 x 270 x 115 mm
Net weight:	approx. 55 kg

-25%

Description	PK	Cat. No.	Price	Now
			GBP	GBP
Balance bench with granite slab	1	6.262 477	927.00	695.25

Analytical balances Explorer® EX



- High-resolution, colour VGA touchscreen, multilingual, with icons for easy operation
- Application: Weighing functions (17 weighing units plus free weighing units), piece counting, percentage weighing, animal weighing/dynamic weighing, check weighing, filling weighing, totalising, formulation, differential weighing, density determination, maximum value hold, ingredient calculation, pipette calibration, gross/net/tare function
- Operation: Mains operation
- Interfaces: Easily accessible communication interfaces (USB, RS232), additional 3rd slot for communication (Ethernet or 2nd RS232). Data output by GMP/GLP with time and date, direct data transfer



EX224

Glass draft shield with a hinged door at the top, replaceable labour protection cover.

Equipment: 3-door, frameless draft shield with interchangeable panes for models with 0.1 mg and 1 mg, optionally with automatic draft shield door. Automatic internal calibration AutoCal. Illuminated bubble level. Selectable ambient and pressure settings. Integrated underfloor weighing hook. Labour protection cover. Locking switch for the software.

-18%

Type	Weighing range	Readability	PK	Cat. No.	Price	Now
	g				GBP	GBP
EX125	120	0.01 mg	1	6.268 202	5,918.74	4,853.37
EX224	220	0.1 mg	1	9.902 371	4,134.90	3,390.62
EX224/AD*	220	0.1 mg	1	6.266 074	5,100.80	4,182.66
EX225D	120 / 220**	0.01 / 0.1 mg	1	6.268 203	6,144.89	5,038.74
EX225D/AD*	120 / 220**	0.01 / 0.1 mg	1	6.268 204	7,924.94	6,498.43

*Automatic door, **Dual range

Weight set E2, cylindrical shape, with wooden box

KERN

Stainless steel, polished. In fully lined wooden boxes. With glove for handling weights (included in weight sets up to 100 g), tweezers and dust brush. Internationally recognised DAKS certificates are available.

-24%

Description	PK	Cat. No.	Price	Now
			GBP	GBP
1 mg ... 500 g	1	7.631 331	1,332.00	1,012.32

Magnetic stirrer LLG-uniSTIRRER 2



Ideal for Training Purposes



Compact and cost-efficient magnetic stirrer without heating for volumes up to 1000 ml. Adjustable speed from 0 to 2000 rpm. Plate diameter 120 mm. Body made of ABS.

Support rod, aluminium (Cat. No. 6.263 435) available as an optional accessory.

Scope of supply: Magnetic stirrer, mains adapter, 2 stirring rods 27 x 8 mm and 34 x 8 mm

Specifications

Stirring quantity (H ₂ O):	1000 ml
Speed range:	0 ... 2000 rpm
Permissible ambient temperature:	0 ... 50 °C
Magnetic bar:	25 x 8 mm
Display:	Analog
Heating plate:	120 x 120 mm
Dimensions (W x D x H):	150 x 135 x 53mm
Weight:	0.5 kg
Power supply:	100 ... 230 V, 50/60 Hz
IP code:	IP 21

-20%

Type	Plug type	PK	Cat. No.	Price	Now
				GBP	GBP
LLG-uniSTIRRER 2	EU	1	6.263 430	74.96	59.97
LLG-uniSTIRRER 2	UK	1	6.263 431	64.23	51.46

Magnetic stirrer Hei-Mix



- Up to 5 Litres
- White PVDF Plate



- Without heating
- The white surface makes the device suitable for titrations
- The Hei-Mix S has a PVDF control plate and a polyamide housing

Specifications

Stirring quantity (H ₂ O):	5 l
Speed range:	0 ... 2200 rpm
Permissible ambient temperature:	5 ... 31 °C
Permissible relative moisture:	80%
Plate Material:	PVDF
Plate Dimensions (Ø):	104 mm
Dimensions (W x D x H):	126 x 140 x 80 mm
Weight:	1.1 kg
Power supply:	230 V
Protection class:	IP 21

-20%

Type	Plug type	PK	Cat. No.	Price	Now
				GBP	GBP
Hei-Mix S	EU	1	9.720 167	252.00	202.32
Hei-Mix S	UK	1	6.201 570	252.00	202.32

Vortex mixers ZX4/WIZARD/TX4 with IR sensor



- Induction Drive
- Digital Display
- Made in Germany



Without heating. Non-mechanical, electronic induction drive, 100% wear-free and maintenance-free. With 15 stirring positions, e.g. for 6 L x 1 L Erlenmeyer flasks or 15 ml x 250 ml beakers (high form). Suitable for mass screening and biological applications, even in humidity incubators. With a built-in controller, digital speed indicator and SoftStart drive. Supplied with mains adapter. 3-year warranty. Made in Germany.

Specifications

Max. stirring volume (H ₂ O):	3 l
Motor rating input:	10 W
Stirring positions:	15
Speed range:	120 ... 1200 rpm
Permissible ambient temperature:	-10 ... 50 °C
Permissible humidity:	80%
Display:	digital
Dimensions (W x D x H):	245 x 425 x 38 mm
Weight:	7.7 kg
IP code:	IP 65
Power supply:	115/230 V, 50/60 Hz

-7%

Type	PK	Cat. No.	Price	Now
			GBP	GBP
MIX 15 eco	1	9.645 958	1,059.30	985.15



Vortexers with patented IR sensor for sample recognition: the shaking process starts automatically when the sample tube approaches the mixing cup head.

- For IR sensor and continuous operation
- Electronic speed control
- Adjustable shaking speeds up to 3000 min⁻¹
- Very good chemical resistance

ZX4: Analog vortex mixer

WIZARD: Compact, analogue vortex mixer

TX4: Digital vortex mixer with timer and LCD

Scope of delivery: Vortex mixer with mixing head

Specifications

Type of movement:	orbital
Orbital diameter:	4.5 mm
Speed range:	0 ... 3000 rpm
Input power:	15 W
IP code:	IP 42
Power supply:	100 ... 240 V, 50 ... 60 Hz
Warranty:	3 years

-7%

Type	Net weight	Plug type	PK	Cat. No.	Price	Now
	kg				GBP	GBP
ZX4	2.7	EU	1	7.971 461	187.20	174.10
ZX4 with foam stands	2.7	EU	1	4.666 714	226.80	210.92
WIZARD	2.2	EU	1	4.666 536	217.80	202.55
TX4	2.7	EU	1	4.666 537	266.40	247.75

Centrifuge Frontier™ Multi FC5707

- ! - New in the Range
- For 15 and 50 ml Tubes



Compact multifunctional centrifuge for general laboratory applications, with splash-proof control panel and touch-wheel control. The pre-installed angle rotor is suitable for round-bottom and conical tubes, as well as for conventional blood tubes.



- Backlit, two-lined LCD
- Quiet brushless motor
- 10 acceleration and deceleration rates
- Fast spin for small measurement runs
- Timer 10 s to 99 h 59 min 59 s
- Memory for up to 99 programmes
- Lid locking system
- Imbalance sensor
- Angle rotor for 4 x 50 ml or 4 x 15 ml tubes

Scope of supply: Centrifuge, 4 x 50/15 ml angle rotor

Specifications

Max. rcf:	4445 x g
Speed:	200 ... 6800 rpm
Permitted ambient temperature:	2 ... 35 °C
Dimensions (WxDxH):	277 x 356 x 236 mm
Power supply:	230 V, 50/60 Hz
Weight:	10 kg

					-27%
Type	PK	Cat. No.	Price	Now	
			GBP	GBP	
FC5707+R09	1	6.492.207	1.168.92	853.31	

LLG-Centrifuge Tubes economy, PP



- With flat PE caps
- With conical bottom (15 and 50 ml) or with self-standing bottom (50 ml)
- Easy-to-read black-volume graduations
- Engraved graduation at the conical bottom of each tube
- Max. rotate speed up to 12000 x g for conical bottom tubes and 6000 x g for self-standing tubes
- Autoclavable at 121 °C and freezable to -80 °C
- Free of pyrogens
- DNase/RNase-free



							-20%
Capacity	Description	Form	PK	Cat. No.	Price	Now	
ml					GBP	GBP	
15	Sterile, in bag of 25 pieces	conical	500	4.668.482	75.68	60.54	
50	Sterile, in bag of 25 pieces	conical	500	4.668.483	93.68	74.94	
50	Sterile, in bag of 25 pieces	with rim	500	4.668.486	104.01	83.21	
15	Aseptically, bulk pack	conical	500	6.270.403	61.24	48.99	
50	Aseptically, bulk pack	conical	500	6.270.404	76.79	61.43	
50	Aseptically, bulk pack	with rim	500	6.270.405	81.90	65.52	

Midi centrifuge G-L

- ! For 1,5 and 2 ml Tubes



Ideal for all types of separation processes, such as in molecular biology. It can be used with standard 1.5/2 ml tubes as well as with PCR strips. The cover opens automatically at the press of a button.



- High-performance motor
- With metal cover
- Starts only when the cover is firmly closed
- Direct and easy setting of speed, rotational speed and programs via membrane keypad

Scope of delivery: Midi centrifuge inkl. metal rotor and cover for 12 vessels, with a capacity of 1.5/2 ml

Specifications

Max. RCF:	16500 x g
Max. speed:	15700 rpm
Max. capacity:	12 x 1.5/2.0 ml
Power consumption:	65 W
Dimensions (W x D x H):	200 x 280 x 140 mm
Weight:	3.9 kg
Power supply:	220 ... 230 V, 50 ... 60 Hz
Protection class:	IP 20

					-14%
Type	Plug type	PK	Cat. No.	Price	Now
				GBP	GBP
G-L	EU	1	4.664.755	944.10	811.93
G-L	UK	1	6.327.434	944.10	811.93
G-L	CH	1	6.327.435	944.10	811.93

LLG-Microcentrifuge tubes, PP



LLG Microtubes cover standard volumes for a variety of sample tests. Certified DNase-, RNase- and pyrogen-free. Clear, in bags. Suitable for microbiology.

Specifications

Temperature:	121 °C
Pressure:	1.05 bar or 15 psi
Time:	20 minutes or less

Centrifugation

Fixed angle rotor:	25000 x g
Swing out rotor:	70000 x g

							-20%
Form	Volume	Max.	PK	Cat. No.	Price	Now	
	ml	rcf			GBP	GBP	
conical	0.5	20000	1000	9.409.023	45.44	12.35	
conical	1.5	25000	1000	9.409.024	44.19	11.35	
round	2.0	25000	1000	9.409.025	46.30	13.04	

LABORTOPS

Rotary Evaporator Hei-VAP Core



Organised and with direct access to the basic parameters of rotation speed and heating bath temperature at all times. For integration into an existing vacuum system or configuration with an optional vacuum controller.

- Clear digital display for showing the current values and button for displaying the set values
- Direct access to rotation and heating bath via separate rotary pushbuttons with LED light to indicate activity
- Locking function for the values to prevent unintentional adjustment or overheating
- Residual heat warning at >50 °C
- Easy adjustment of the immersion depth up to 155 mm and the angle of inclination of the vaporiser bulb from 20° to 80°
- Grease-free glass sets thanks to innovative sealing technology
- Optional cable extension means the control panel can also be installed outside closed fume cupboards

Scope of supply: Flask clamp Easy-Clip, vapour tube, ventilation cap, heating bath, 1-l receiving flask, 1-l evaporating flask. Supplied condenser as indicated.



Specifications

Drive

Speed range:	10 ... 280 rpm
Speed display:	Digital
Stroke displacement:	155 mm
Protection class:	IP 20

Heating bath

Bath volume:	4.5 L
Temperature range:	Ambient ... 210 °C
Power input:	1300 W
Protection class:	IP 67

General data

Max. size evaporating flask:	5 L
Condensing surface:	1400 cm ²
Condensing surface XL condenser:	2200 cm ²
Power supply:	230 V



- Residual Heat Warning
- With Hand Lift
- Vertical Glass Set

Description	Glassware set	Plug type	PK	Cat. No.	Price	
					Price	Now
					GBP	GBP
G1 Angled condenser	standard	EU	1	4.666 085	3,440.70	3,131.04
G1 Angled condenser	standard	UK	1	4.666 107	3,440.70	3,131.04
G1 Angled condenser	standard	CH	1	4.666 127	3,440.70	3,131.04

-9%