

**medline**  
scientific

**Microscopy**



Inspired Solutions  
For Your Laboratory





**Ceti began producing the highest quality in microscopes back in the 1970s. Medline Scientific acquired the business in 2004 and continues to design and manufacture the Ceti range to the same high standards.**

Medline has many years of professional sales and service experience in all aspects of microscopy and specimen preparation (complemented by an extensive range of consumables). We supply and stock a wide range of biological light microscopes, inverted and stereo microscopes plus quality accessories such as cameras for photo-microscopy and dedicated image analysis solutions.

The Ceti portfolio satisfies the professional and amateur microscopist in educational establishments, medical, industry and research institutes. All products are manufactured under ISO 9001:2015 procedures and are CE marked. A one year guarantee is provided with each microscope but extended warranties and support contracts are also available through Medline Service Contracts.

The Ceti microscope range includes monocular, binocular and trinocular configurations to suit most typical applications and requirements. These microscopes use brightfield, phase contrast, darkfield, polarisation or fluorescent light techniques and are supplied with optics ranging from Achromatic to Infinity Corrected Planachromatic objectives, depending on the model. All Ceti microscopes are manufactured to the highest specification demanded by the relevant application. The following are just some of our more popular microscope ranges.

The Max, Magnum and the new Vulcan Upright Biological Compound Microscopes are used for observing thin, transparent, slide mounted specimens under magnifications typically ranging from 40X to 1000X. Typical specimens suitable for observation using this type of microscope are histology sections, thin sections of plant material, transparent parts

of organisms such as insects, blood, cytological specimens, crystals and emulsions – although this is not an exhaustive list.

The Versus - TC and Vertex Inverted Microscopes are used for observing materials, cells and organisms in culture and in flasks, petri dishes, microtitre plates and roller bottles. They are equipped with brightfield and, most usually, phase contrast capabilities so that unstained transparent tissue can be observed more clearly. These smaller, lower cost models are often referred to as Tissue Culture Microscopes as they tend to be sited in tissue culture suites.

The Steddy and Varizoom Stereo Microscopes, also known as dissecting microscopes, use low power magnification to examine specimens that are not thin and are 'lumpy' such as insects, plants, geological specimens, fossils, industrial parts, coins, archaeological artefacts, pond life, invertebrates, zoological specimens, embryos, forensic samples, textiles etc.

In addition to the above microscopes, Medline Scientific offers a range of affordable digital microscope cameras from that include convenient features such as in-built and attachable screens to save bench space, WiFi and HDMI outputs and high speed USB 3.0 connections. Every camera comes complete with its own capture and image analysis software package.

Medline Scientific is proud to be partnered with Olympus, which enables us to offer an even wider range of microscopes, and Photometrics, allowing us to offer high specification cameras for applications that require such models with, for example, extremely high quantum efficiency.

# Cameras

## Ceti Digi-Pad

5MP Microscope Tablet Camera is specially designed for microscopy applications. It comes with a high-definition, 9.7" colour LCD screen and is equipped with software that allows the user to preview an image, set the white balance, capture images and videos as well as having measurement and annotation capabilities. The Ceti Digi-Pad has an integral C-Mount fitting, which can be connected to any microscope with a corresponding C-Mount or eyepiece adaptor.

**Code**  
9556.5600M

**Description**  
Ceti Digi-Pad digital tablet camera with analysis software - Android



|                           |  |
|---------------------------|--|
| <b>CPU</b>                | CPU RK3066 dual-core 1.5Hz                         |
| <b>Display</b>            | 9.7 inch (1024 x 768) colour LCD touch screen      |
| <b>Storage</b>            | External SD memory card - up to 32GB               |
|                           | ROM 2GB  |
|                           | RAM 1GB DDR3                                       |
| <b>Camera</b>             | 15fps at 1024 x 768                                |
|                           | 1/2.5 (4:3) 5MP CMOS                               |
| <b>Network</b>            | Wi-Fi  |
|                           | Bluetooth  |
| <b>Input / Output</b>     | HDMI Output  |
|                           | On/Off Button                                      |
|                           | DC5V Power   |
|                           | SD Memory Slot                                     |
|                           | USB/Mini-USB (OTG) supports USB keyboard and mouse |
| <b>Mechanical</b>         | LCD screen 360° horizontal/90° vertical            |
| <b>Operating Software</b> | Android 4.2 RAM 2GB                                |
| <b>Software</b>           | Built-in microscopy software                       |

# Microscopes

## Ceti WFHD5C

All-in-one (HDMI+Wi-Fi+SD card) C-mount camera with high sensitivity CMOS sensor, simultaneous HDMI & WiFi output, built-in mouse control and built-in image capture and video recording to SD card. When using the optional 11.6" monitor there is a built-in toolbar including zoom, mirror, comparison and freeze functions. For use with a device other than the monitor, PC, Linux and Mac IOS software is included.

This multiple interface microscope camera utilises an ultra-high performance Sony CMOS sensor as the image capture device. HDMI and WiFi are used as the data transfer interface to an HDMI display or computer/laptop, with USB connection also available to a PC.

If an HDMI connection is used, the included USB mouse can be used to control the camera, browse and compare the captured image, play video and playback images.

For WiFi output, unplug the mouse and plug in the USB WiFi adapter and connect your device's WiFi to the camera. Then the image stream can be transferred to the device via the advanced software (included). With this software, you can control the camera and process the image as required.

The camera body, made from tough, aluminium alloy, ensures a heavy duty, workhorse solution. The camera is equipped with a high quality IR-CUT filter to protect the camera sensor.

| Code      | Description                                |
|-----------|--|
| 9558.0005 | Ceti WFHD5C Microscope Camera with SD card |

## Ceti WFHD5M

HD monitor features a Panasonic IPS LCD (Super TFT) to guarantee a wide viewing angle and high resolution. The LCD panel has true 1080P resolution, a high contrast ratio (up to 1000:1), LED backlight with 50,000 hours long life time and an 11.6" active area.

| Code       | Description                                       |
|------------|---|
| 9556.5800M | Ceti 11.6" HD Monitor for WFHD5C HDMI/WiFi Camera |



## Ceti D6.3

6.3 megapixel, C-Mount microscope camera is a USB 3.0 device that utilises an ultra-high performance SONY Exmor CMOS sensor as the image capture device.

The included 12-bit software has processing controls for demosaic adjustments, automatic exposure, gain adjustment, one click white balance, chrominance adjustment, saturation adjustment, gamma correction, luminance adjustment and contrast adjustment.

The camera is designed for high quality image and video capture in brightfield microscopy applications. It will also cope well with medium to high signal fluorescence applications.

| Code      | Description   |
|-----------|---|
| 9558.0063 | Ceti D6.3 6.3MP Digital Microscope Camera with capture software |

## Ceti D18

18 megapixel, C-Mount microscope camera is a USB 3.0 device that utilises an ultra-high performance Aptina CMOS sensor as the image capture device.

It comes with advanced video and image processing software, allowing capture and output on Windows, Linux and Mac OSX platforms. Video can be captured at 1080P resolution at up to 30 fps.

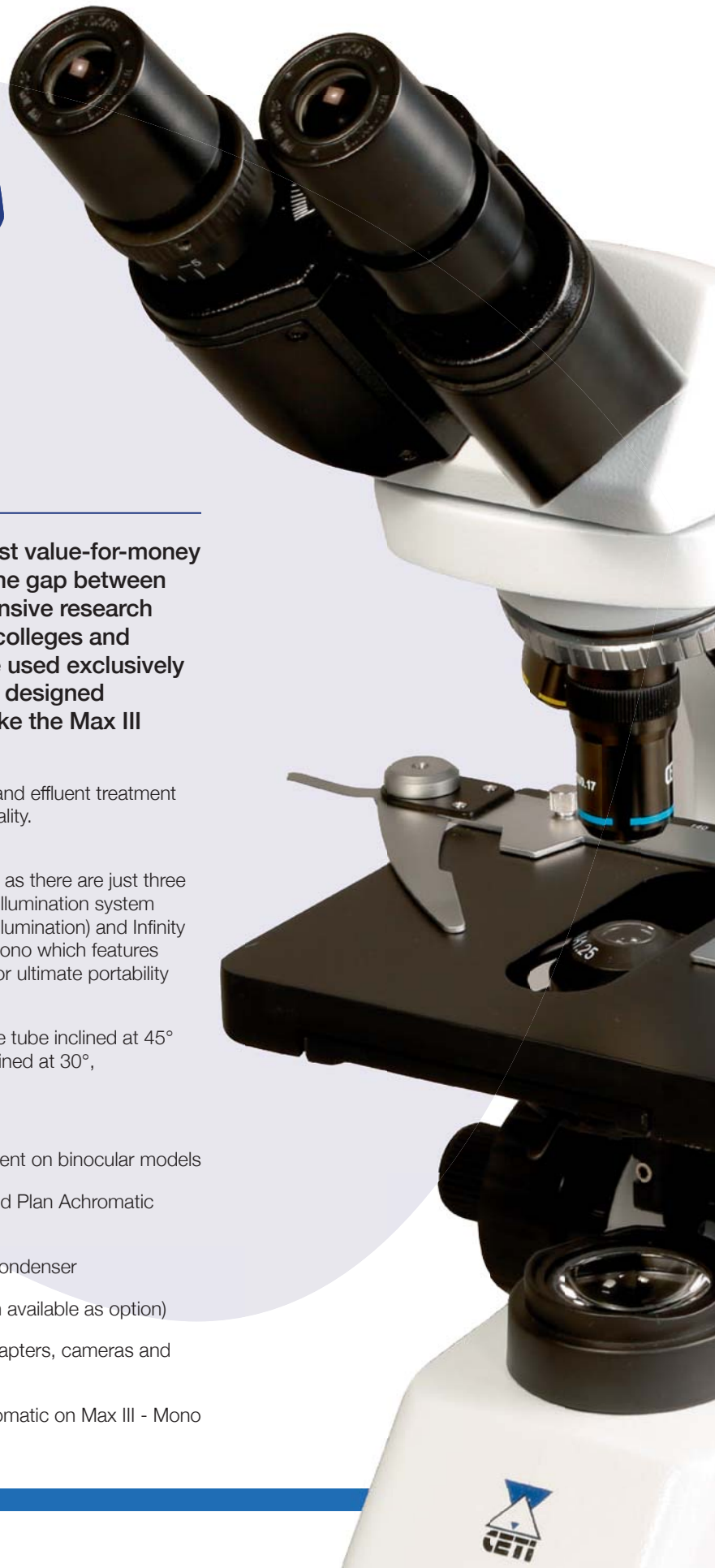
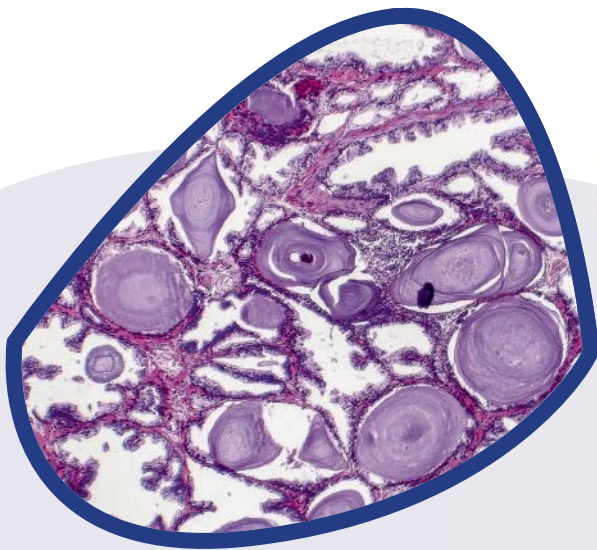
The included 12-bit software has processing controls for demosaic adjustments, automatic exposure, gain adjustment, one click white balance, chrominance adjustment, saturation adjustment, gamma correction, luminance adjustment and contrast adjustment.

The camera is designed for use with brightfield applications and is ideal if high resolution, large-scale prints (such as presentation posters) are required.

| Code      | Description   |
|-----------|---|
| 9558.0018 | Ceti D18 18MP Digital Microscope Camera with capture software |



# Compound Microscopes



## Ceti Max III

The Max III series microscopes are Ceti's best value-for-money upright biological microscopes and bridge the gap between low cost student models and the more expensive research microscopes. They are ideal for teaching in colleges and universities, although they do not have to be used exclusively in teaching laboratories! However, the newly designed cord storage facility and carrying handle make the Max III absolutely perfect for use in these labs.

They are very popular in industry, veterinary laboratories and effluent treatment plants as well as education, giving outstanding image quality. The Max III is supplied with high clarity objectives.

Selection of the best model for your requirements is easy as there are just three models to choose from, all featuring a powerful 3W LED illumination system (although they all are alternatively available with halogen illumination) and Infinity Corrected Plan Achromatic objectives (except Max III - Mono which features achromatic objectives). A mirror attachment is available for ultimate portability where power is not available.

The Monocular and Binocular models feature an eyepiece tube inclined at 45° whilst the Trinocular model is more ergonomic, being inclined at 30°, and includes a photo port.

### Features:

- Widefield 10X, FN18 eyepieces with dioptre adjustment on binocular models
- Quadruple, reversed nosepiece with Infinity Corrected Plan Achromatic objectives\*
- Mechanical stage, coaxial coarse/fine focus, Abbe condenser
- White LED illumination with intensity control (halogen available as option)
- Range of accessories including eyepiece camera adapters, cameras and storage case

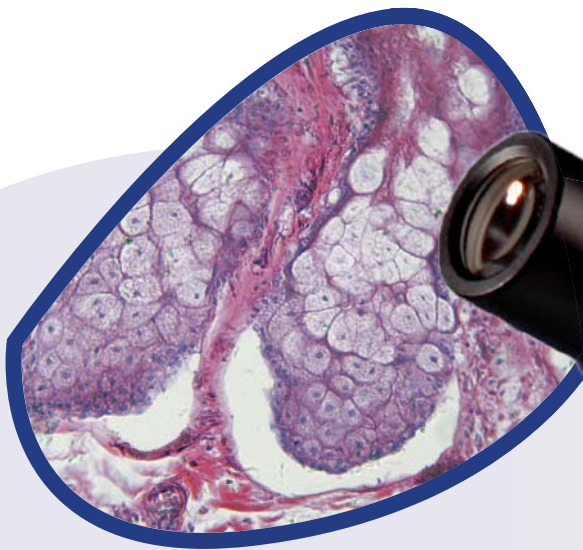
\* Achromatic on Max III - Mono



| Model                 | Max III-Mono  | Max III-Bino  | Max III-Trino                               |
|-----------------------|---|---|---|
| <b>Optical Head</b>   | Monocular, inclined at 45°  | Binocular, inclined at 45°                            | Trinocular with photo port, inclined at 30° |
|                       | Interpupillary Distance Adjustment (Siedentopf type): 47 to 78mm  |   |   |
|                       | -   | Dioptre adjustment on one eyepiece                    |   |
| <b>Eyepieces</b>      | 10x/18mm widefield  | 10x/18mm widefield (pointer in one eyepiece)          |   |
| <b>Nosepiece</b>      | Quadruple reversed, revolving with click stop   |   |   |
| <b>Objectives</b>     | 4x, 10x, 40x Achromatic   | 4x, 10x, 40x, 100x Infinity Corrected Plan Achromatic |   |
| <b>Condenser</b>      | Brightfield Abbe NA 1.25 – precentred, focusable  |   |   |
|                       | Iris diaphragm and filter holder  |   |   |
| <b>Stage</b>          | 160 x 140mm with built-in mechanical stage and slide holder   |   |   |
|                       | 75 x 50mm movement, Vernier scale   |   |   |
| <b>Focusing Knobs</b> | Coaxial coarse and fine with stop   |   |   |
| <b>Mains Power</b>    | 220 – 240V/50 – 60Hz  |   |   |
| <b>Illumination</b>   | LED 3W with intensity control (halogen also available)  |   |   |
| <b>Supplied with</b>  | Immersion oil (5ml), blue filter, dust cover, power cord with unique 'self-store' system and instruction manual |   |   |

| Code      | Description  |
|-----------|--|
| 1203.1003 | Max III Monocular Compound Microscope (4x, 10x, 40x Achromatic)                                |
| 1203.2006 | Max III Binocular Compound Microscope (4x, 10x, 40x, 100x Infinity Corrected)                  |
| 1203.3006 | Max III Trinocular Compound Microscope (4x, 10x, 40x, 100x Infinity Corrected Plan Achromatic) |

# Compound Microscopes



## Ceti Magnum Compound Microscopes for Brightfield Use

The Magnum series of microscopes are Ceti's most popular, economically priced, biological upright microscope. Providing excellent quality images via the widefield FN20mm eyepieces, these microscopes include four Infinity Corrected Plan Achromatic objectives in the reversed quintuple nosepiece.

Magnum microscopes feature a robust, T-shaped base, designed to offer maximum stability. Modern, ergonomic features, such as a 30° inclined eyepiece tube, ensure a comfortable viewing position over a prolonged period.

Three models are equipped for Brightfield use – binocular, trinocular (for those users that wish to add a camera) and a rechargeable version that can be used in the field or in regions where power supplies are interrupted. All three feature a bright, white LED light source with intensity control.

### Features:

- Sturdy base for comfortable viewing over long periods
- Widefield 10X, FN20 eyepieces with dioptre adjustment
- Quintuple, reversed nosepiece with four Infinity Corrected Plan Achromatic objectives
- Wide range of accessories
- Bright, white LED illumination with intensity control
- Full Köhler illumination

*Note that alternative models are available with halogen illumination and binocular eyepiece tubes if required.*

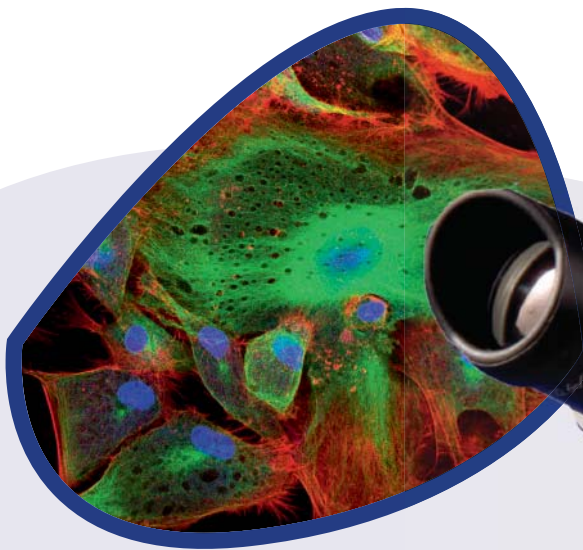




| Model  | Magnum-B   | Magnum-T                                    | Magnum-TR                                  |
|--|--|---|--|
| Optical Head   | Binocular, inclined at 30°                                       | Trinocular with photo port, inclined at 30° |  |
|  | Interpupillary Distance Adjustment (Siedentopf type): 55 to 75mm |   |  |
|  | Dioptre adjustment on one eyepiece                               |   |  |
| Eyepieces  | 10x/20mm widefield   |   |  |
| Objectives   | 4x, 10x, 40x, 100x Infinity Corrected Plan Achromatic            |   |  |
| Condenser  | Pre-condenser with field diaphragm                               |   |  |
|  | Iris diaphragm   |   |  |
| Stage  | 210 x 140mm with built-in mechanical stage and slide holder      |   |  |
|  | 90 x 60mm movement, Vernier scale                                |   |  |
| Focusing Knobs   | Coaxial coarse and fine with stop                                |   |  |
|  | Tension adjustment ring  |   |  |
| Mains Power  | 220 – 240V/50 – 60Hz   |   |  |
| Illumination   | 3W LED with intensity control                                    |   | Rechargeable 3W LED with intensity control |
|  | Supplied with  |   |  |
| Blue and green filter, 2 spare fuses, immersion oil (10ml), soft rubber eyecups, dust cover and instruction manual |  |   |  |

| Code       | Description  |
|------------|--|
| 2629.0000M | Magnum-B Binocular Compound Microscope with LED illumination                 |
| 2729.0000M | Magnum-T Trinocular Compound Microscope with LED illumination                |
| 2721.7000M | Magnum-TR Trinocular Compound Microscope with LED illumination, rechargeable |

# Compound Microscopes



## Ceti Magnum - Variants

### Ceti Magnum Compound Microscopes for Phase Contrast, Polarisation or Epi-Fluorescence

The Magnum series of microscopes are Ceti's most popular, economically priced, biological upright microscope. Providing excellent quality images via the widefield FN20mm eyepieces, these microscopes include four Infinity Corrected Plan Achromatic objectives in the reversed quintuple nosepiece.

Magnum microscopes feature a robust, T-shaped base, designed to offer maximum stability. Modern, ergonomic features, such as a 30° inclined eyepiece tube, ensure a comfortable viewing position over a prolonged period.

Three trinocular Magnum models feature different contrasting techniques – Phase Contrast, Polarisation and Epi-Fluorescence. All three can also be used in Brightfield mode so they are extremely flexible. Bright, white LED transmitted lighting, with intensity control, is featured in all three models with the Epi-Fluorescence model also including an LED light source for fluorescence excitation (instead of an expensive, difficult to dispose of, challenging to centre and energy inefficient mercury vapour lamp).

#### Features:

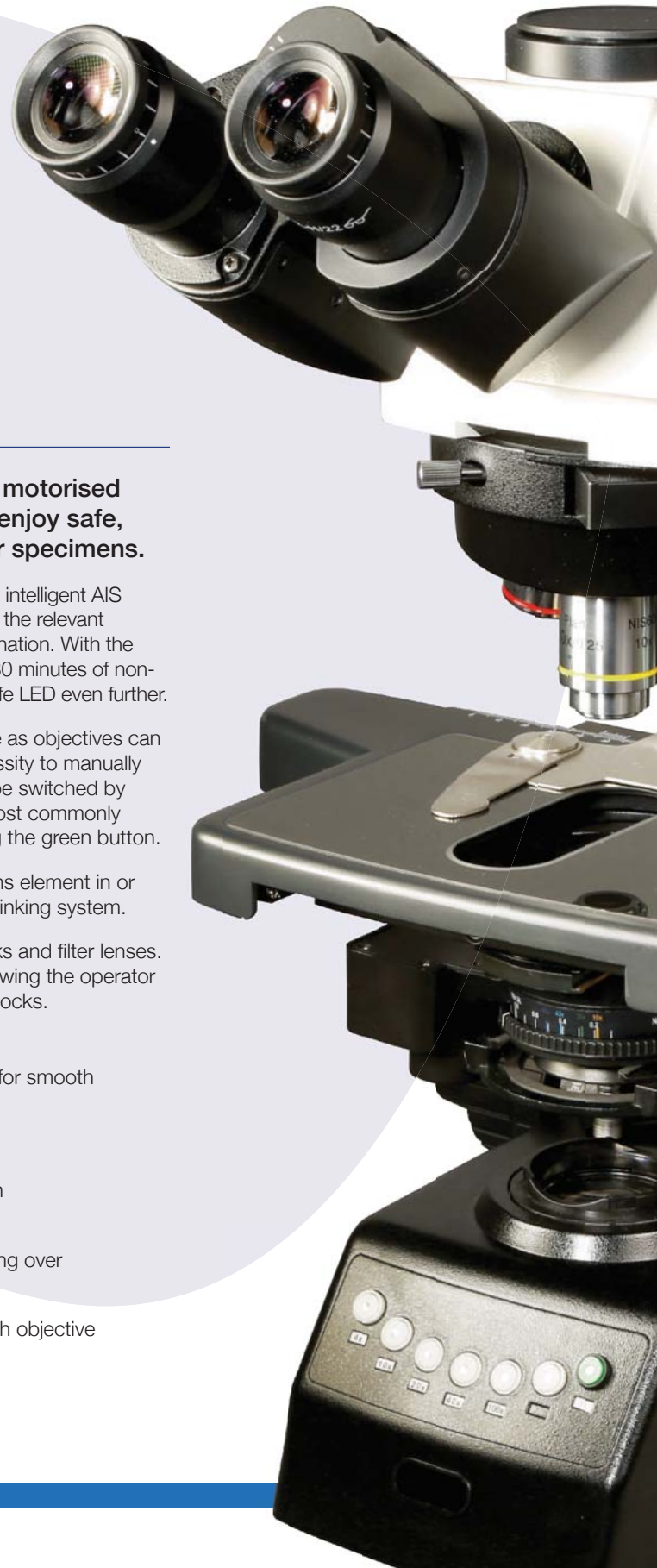
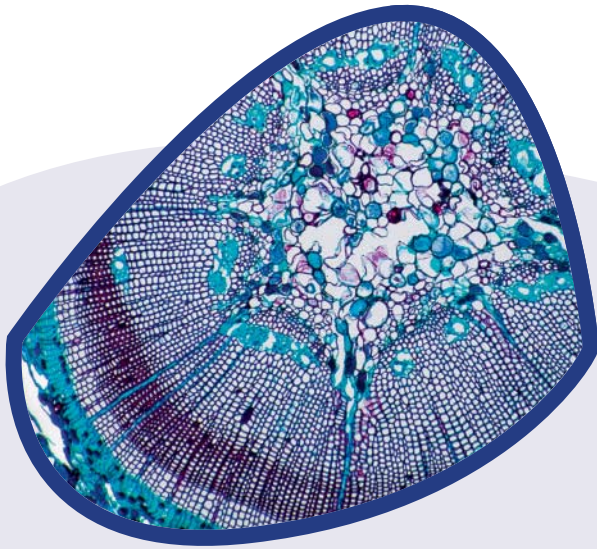
- Sturdy base for comfortable viewing over long periods
- Widefield 10X, FN20 eyepieces with dioptre adjustment
- Quintuple, reversed nosepiece with four Infinity Corrected Plan Achromatic objectives
- Trinocular eyepiece tube as standard to accept digital microscope cameras
- Bright, white LED illumination with intensity control
- Full Köhler illumination



| Model                     | Magnum-POL   | Magnum-PH   | Magnum-FL   |
|---------------------------|--|---|---|
| Optical Head              | Trinocular with photo port, inclined at 30°  |   |   |
|                           | Interpupillary Distance Adjustment (Siedentopf type): 55 to 75mm   |   |   |
|                           | Dioptre adjustment on one eyepiece   |   |   |
|                           | Analyser   | -   |   |
| Eyepieces                 | 10x/20mm widefield   |   |   |
| Objectives                | 4x, 10x, 40x, 60x Infinity Corrected Plan Achromatic   | 10x, 20x, 40x, 100x oil Phase Contrast Infinity Corrected Plan Achromatic | 4x, 10x, 40x, 100x Infinity Corrected Plan Achromatic |
| Condenser                 | Pre-condenser with field diaphragm and polariser   | Pre-condenser with field diaphragm  |   |
|                           | -  | Phase contrast turret – NA 1.25   | Brightfield Abbe – NA 1.25                            |
|                           | Focusable and centrable, iris diaphragm  |   |   |
| Stage                     | Round, centerable with scale and two stage clips   | 210 x 140mm with built-in mechanical stage and slide holder               |   |
|                           | -  | 90 x 60mm movement, Vernier scale   |   |
| Focusing Knobs            | Coaxial coarse and fine with stop  |   |   |
|                           | Tension adjustment ring  |   |   |
| Mains Power               | 220 – 240V/50 – 60Hz   |   |   |
| Illumination, Transmitted | 3W LED with intensity control  |   |   |
| Illumination, Reflected   | -  |   | 3.6W LED with intensity control                       |
| Supplied with             | Blue and green filter, 2 spare fuses, immersion oil (10ml), soft rubber eyecups, dust cover and instruction manual |   |   |

| Code       | Description  |
|------------|--|
| 2753.0000M | Magnum-POL Trinocular Compound Microscope with Polarisation  |
| 2738.0000M | Magnum-PH Trinocular Compound Microscope with Phase Contrast |
| 2777.0000M | Magnum-FL Trinocular Compound Microscope with Fluorescence   |

# Compound Microscopes



## Ceti Vulcan

**After years of research and development the Vulcan motorised biological microscope is designed to allow users to enjoy safe, comfortable and superb quality observations of their specimens.**

The intensity of illumination for each objective can be adjusted and the intelligent AIS (Automatic Illumination System) automatically recalls that intensity with the relevant objective. This averts the possibility of uncomfortable over-bright illumination. With the handy ECO function the transmitted light turns off automatically after 30 minutes of non-use. This not only saves energy, but also prolongs the life of the long-life LED even further.

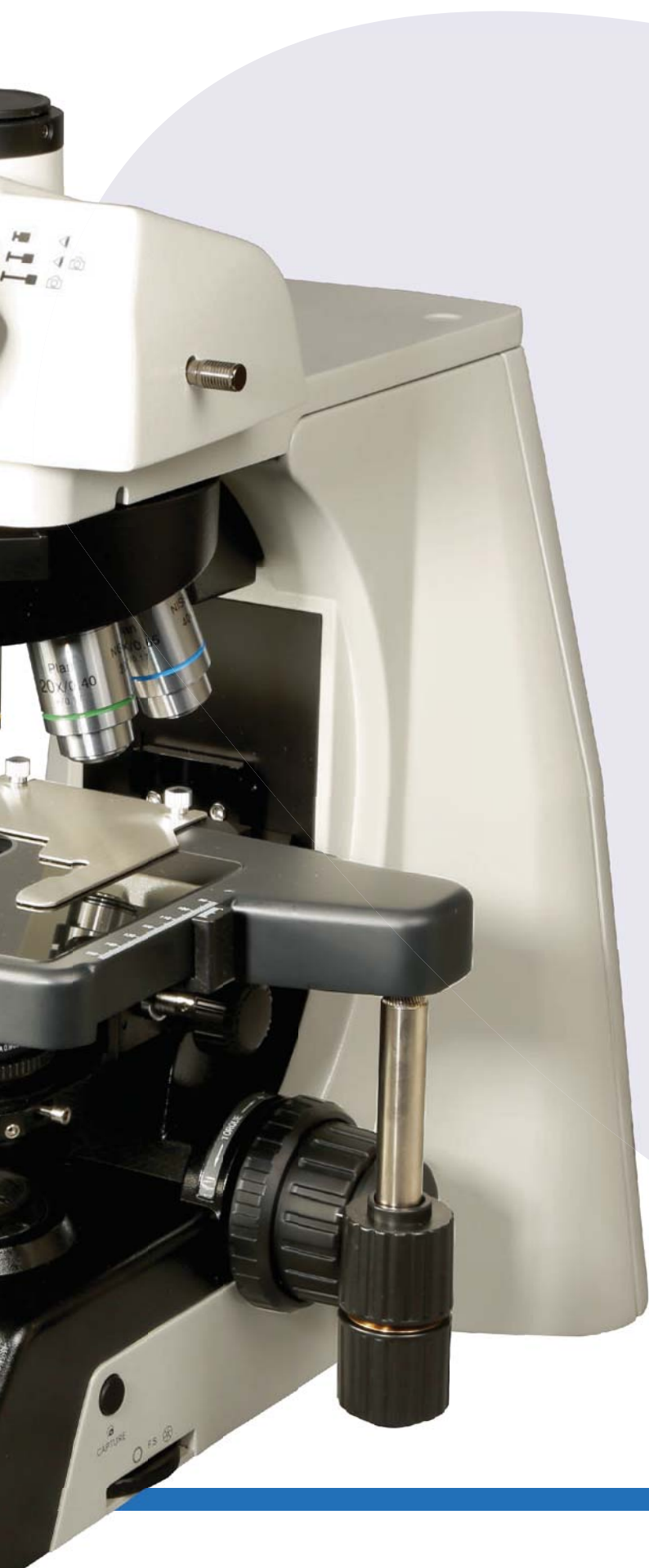
The motorised nosepiece adds to the ergonomics of the microscope as objectives can be selected via buttons on the front of the stand, removing the necessity to manually rotate the nosepiece - with the Remote Control Pad objectives can be switched by simply pressing the buttons. Users can also self-define two of the most commonly used objectives and swap between these two objectives by pressing the green button.

The motorised swing-out condenser automatically swings the top lens element in or out according to the objective lens that is selected via the intelligent linking system.

The optional epi-fluorescence system features high quality filter blocks and filter lenses. 6 filter blocks can be fitted into the epi-fluorescence attachment, allowing the operator to view different fluorophores without the necessity to change filter blocks.

### Features:

- Mechanical stage with low X/Y controls and Gorilla Glass insert for smooth operation
- Super widefield 10X, FN22 eyepieces for maximum field of view
- Quintuple, reversed nosepiece with five Infinity Corrected N-Plan Achromatic objectives
- Ergonomic, tilting trinocular eyepiece tube for comfortable viewing over long periods
- Automatic Illumination System with auto intensity control on each objective
- Full Köhler illumination and a wide range of accessories



| Model          | Vulcan 9300   |
|----------------|---|
| Optical Head   | Ergonomic Tilting Trinocular with photo port, adjustable from 0° to 35°               |
|                | 3-Position beam splitter; 0:100, 100:0, 80:20   |
|                | Interpupillary Distance Adjustment: 47 to 78mm  |
|                | Dioptre adjustment on both eyepieces  |
| Eyepieces      | 10x/22mm, super widefield   |
| Nosepiece      | Motorised with remote switching pad on base   |
|                | Nosepiece rotating buttons behind focus knobs   |
| Objectives     | 4x, 10x, 20x, 40x, 100x oil Infinity Corrected N-Plan Achromatic                      |
| Condenser      | Pre-condenser with field diaphragm  |
|                | Motorised Abbe - NA 1.25 with automatic swing-out when 4x objective is selected       |
|                | Focusable and centrable, iris diaphragm   |
| Stage          | Double layer mechanical stage, 190 x 152mm with Gorilla Glass insert and slide holder |
|                | 78 x 32mm movement, Vernier scale   |
| Focusing Knobs | Low position coaxial coarse and fine with stop  |
|                | Fine focus knobs can be swapped   |
|                | Tension control   |
| Mains Power    | 220 – 240V/50 – 60Hz  |
| Illumination   | 3W S-LED with Fly-lens, intensity control and Automatic Illumination System (AIS)     |
|                | ECO function switches illumination off after 30 minutes non-use                       |
| Supplied with  | Power cord, microscope oil and cover  |

**Code**  
3200.9300LED

**Description**  
Vulcan 9300 Automatic Compound Microscope

# Compound Microscopes

## CX43 Biological Upright Microscope

The Olympus CX43 microscope enables users to remain comfortable during long periods of routine microscopy observations. The microscope frame conforms to the user's hands and the location of the control knobs maximise ergonomics to improve work efficiency.

Users can quickly set a specimen with one hand, while adjusting the focus and operating the stage with the other hand with minimal movement. The microscope also features an optional camera port for digital imaging.

The CX43 can be equipped to handle a range of techniques, including phase contrast, darkfield and simple epi-fluorescence.



| Model          | CX43  |
|----------------|---|
| Optical Head   | Trinocular, angled at 30°                                     |
|                | Interpupillary Distance Adjustment: 48 to 75mm                |
|                | Dioptre adjustment on both eyepieces                          |
| Eyepieces      | 10x/20mm, widefield   |
| Nosepiece      | Quintuple nosepiece, reversed                                 |
| Objectives     | 4x, 10x, 20x, 40x, 100x oil Phase Contrast                    |
| Condenser      | Pre-condenser without field diaphragm                         |
|                | Abbe Condenser, NA 1.25                                       |
|                | 7-Position Turret Condenser                                   |
|                | Focusable and centrable, iris diaphragm                       |
| Stage          | Wire movement mechanical stage, 211 x 154mm with slide holder |
|                | 76 x 52mm movement, Vernier scale                             |
| Focusing Knobs | Coaxial coarse and fine with stop                             |
|                | Tension control on coarse focus                               |
| Mains Power    | 100 – 240V/50 – 60Hz  |
| Illumination   | 2.4W LED with intensity control                               |
| Supplied with  | Power cord, microscope oil and cover                          |

### Code

OLYK23009321

### Description

Olympus CX43 Trinocular Upright Microscope with 4x Brightfield and Phase Contrast and Darkfield on 10x, 20x, 40x and 100x (oil)

# Inverted Microscopes

## CKX53 Inverted Microscope

Inverted microscopes from Olympus represent the perfect solution for cell culture in which a variety of cells are grown under controlled conditions thanks to its easy and quick operation combined with excellent optical performance, optimal working distances and various contrast methods. With a slim and compact design, centring free phase contrast and optional fluorescence capability, all kinds of live cells checks can be easily and quickly performed.

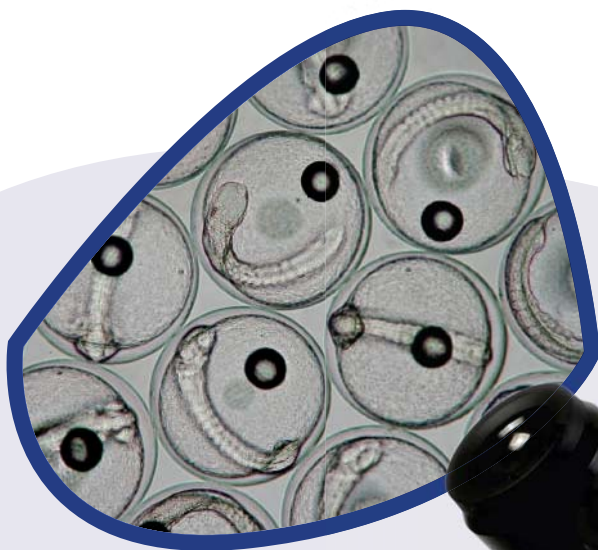
The CKX53 has been designed from the ground up to be the best microscope available for routine inverted microscopic analysis. The combination of excellent optical performance and mechanical quality results in a microscope system of outstanding value and comfort for regular use. Features such as the pre-centred phase contrast and inversion contrast (IVC) enable users to design their own system, to match their application, with ease.

| Code         | Description   |
|--------------|---|
| OLYK23009073 | Olympus CKX53 Trinocular Inverted Microscope, Integrated Phase Contrast |

| Model          | CKX53   |
|----------------|---|
| Optical Head   | Trinocular with photo port, angled at 45°, 100:0, 0:100 split                                   |
|                | Interpupillary Distance Adjustment: 48 to 75mm  |
|                | Dioptre adjustment on both eyepieces  |
| Eyepieces      | 10x/22mm, super widefield   |
| Nosepiece      | Quintuple nosepiece with click stop   |
| Objectives     | 4x, 10x, 20x and 40x LWD Phase Contrast   |
| Condenser      | Abbe Condenser, NA 1.25   |
|                | Inversion Contrast  |
|                | Pre-centred phase slider with single phase ring for 4x, 10x, 20x, and 40x plus two BF positions |
|                | Iris diaphragm  |
| Stage          | Plain stage, 252 x 200mm, with exchangeable transparent plate                                   |
|                | Mechanical stage, 180 x 70mm with microplate holder   |
|                | 110 x 74mm movement, Vernier scale  |
| Focusing Knobs | Coaxial coarse and fine with stop   |
|                | Tension control on coarse focus   |
| Mains Power    | 100 – 240V/50 – 60Hz  |
| Illumination   | 4W LED with intensity control   |
| Supplied with  | Power cord and cover  |



# Inverted Microscopes



## Versus-TC LED

The Ceti Versus-TC LED is a robust tissue culture microscope, equipped with three phase contrast objectives as well as a 4x brightfield objective that is useful for visualising a larger field of view. The phase slider is fitted with centrable phase rings plus an open position for brightfield viewing.

The Versus-TC LED also features a trinocular head with a camera port to accept a wide variety of cameras, a pair of 10x super widefield (FN22) eyepieces, a quintuple position nosepiece with convenient click stop so you know that the selected objective is aligned correctly, infinity corrected, long working distance plan achromatic optics (4x brightfield plus 10, 20 and 40x phase contrast/brightfield), a large mechanical stage equipped with a range of Petri dish and culture flask holders, ergonomic coaxial coarse and fine focus and a bright white, adjustable intensity, 3W LED light.

### Features:

- Compact, sturdy base for many years of use
- Super widefield 10X, FN22 eyepieces with dioptre adjustment for a wide field of view
- Quintuple, reversed nosepiece with four LWD Plan Achromatic objectives
- Eyepiece tube with photo port to accept digital microscope cameras
- Bright, white LED illumination with intensity control
- Phase contrast condenser with centrable phase rings





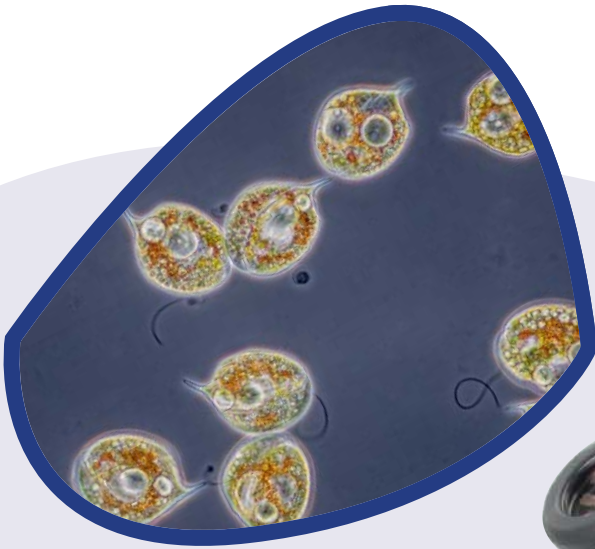


| Model          | Versus-TC LED   |
|----------------|---|
| Optical Head   | Trinocular with photo port, inclined at 45°   |
|                | Interpupillary Distance Adjustment (Siedentopf type): 48 to 75mm  |
|                | Dioptre adjustment on both eyepiece tubes   |
| Eyepieces      | 10x/22mm widefield, centering telescope   |
| Nosepiece      | Quintuple, reversed, revolving with click stop  |
| Objectives     | 4x, 10x, 20x, 40x Phase Contrast Plan Achromatic LWD  |
| Condenser      | Phase contrast condenser with adjustable centering and brightfield position                               |
|                | Working Distance 70mm   |
|                | Focusable and centrable, iris diaphragm   |
| Stage          | 300 x 170mm with additional mechanical stage  |
|                | 75 x 132mm movement, Vernier scale  |
| Focusing Knobs | Coaxial coarse and fine with stop   |
|                | Tension adjustment ring   |
| Mains Power    | 220 – 240V/50 – 60Hz  |
| Illumination   | 3W LED with intensity control   |
| Supplied with  | Blue and green filters, 2 spare fuses, immersion oil (10ml), Allen key, dust cover and instruction manual |

**Code**  
3660.4000M

**Description**  
Versus-TC LED Trinocular Inverted Microscope with Integrated Phase Contrast

# Inverted Microscopes



## Ceti Vertex Pro

**This substantial, superbly engineered microscope has been specially developed to produce exceptionally high quality, high contrast phase contrast and brightfield images of your specimens.**

The controls are ergonomically positioned and the large stage, with its range of standard accessories, allows you to observe almost all classes of specimens on the microscope.

The Ceti Vertex-R LED features 3W S-LED illumination and Phase Contrast as standard but can also be configured with Hoffman Modulation Contrast (HMC) or 3D Emboss Contrast, both of which can be used with glass or plastic dishes to increase specimen contrast. This makes the Vertex-R LED suitable for advanced research applications. The included mechanical stage can be fitted with a variety of holders for Petri dishes, slides and well plates and the condenser can be removed to allow the stage to accept larger flasks or cell factories.

An optional photo port is available, along with 1x and 0.5x C-Mount relay lenses. The Ceti Vertex-FL LED has the same features as the Vertex-R LED but is additionally equipped with an epi-fluorescence attachment. This can be configured with up to 3 filter blocks.

### Features:

- Large base to ensure stability whilst viewing flasks, slides and dishes
- Super widefield 10X, FN22 eyepieces with dioptre adjustment for a wide field of view
- Quintuple, reversed nosepiece with four LWD Infinity Corrected Plan Achromatic objectives
- Eyepiece tube with side mounted photo port to accept digital microscope cameras
- Bright, white LED transmitted illumination with intensity control
- Phase Contrast, Emboss (3D) Contrast, Hoffman Modulation Contrast and Epi-Fluorescence options





| Model                    | Vertex-PH  | Vertex-FL  |
|--------------------------|--|--|
| Optical Head             | Binocular, inclined at 45°   |  |
|                          | Interpupillary Distance Adjustment (Siedentopf Type): 48 to 75mm   |  |
|                          | Dioptre adjustment on both eyepieces   |  |
|                          | Side mounted camera port (100/0 : 0/100)   |  |
| Eyepieces                | 10x/22mm super widefield   |  |
| Nosepiece                | Quintuple, reversed, revolving with click stop   |  |
| Objectives               | 4x, 10x, 20x, 40x<br>Phase Contrast<br>Infinity Corrected<br>Plan Achromatic   | 4x, 10x, 20x, 40x<br>Infinity<br>Corrected Plan<br>Achromatic  |
| Condenser                | N.A 0.3, W.D 75mm, without condenser<br>W.D 187mm  |  |
| Phase System             | Condenser with 4x Phase Annular Plate<br>10x, 20x, 40x Universal Annular Phase Plate                                     |  |
| Hoffman Phase            | Hoffman condenser and 10x, 20x 40x<br>objectives   |  |
| Relief 3D Contrast       | Emboss Contrast 10x, 20x, 40x Universal<br>Emboss Contrast Slider  |  |
| Epi-Fluorescence         | -  | Filter cubes with<br>noise terminator<br>mechanism with up<br>to 3 Epi-fluorescence<br>filter cubes and<br>attachable contrast<br>shield |
| Stage                    | 170 x 250mm  |  |
|                          | With separate attachable mechanical stage<br>(129 x 80mm)  |  |
| Focusing Knobs           | Coaxial coarse and fine with stop  |  |
|                          | Tension adjustment ring  |  |
| Mains Power              | 220 – 240V/50 – 60Hz   |  |
| Illumination Transmitted | 3W LED with intensity control  |  |
| Illumination Reflected   | -  | 3.6W LED with<br>intensity control with<br>built in Fly-eye lens<br>(Blue / Green / UV<br>Fluorescent<br>LED units)                      |
| Supplied with            | Blue and green filter, 2 spare fuses,<br>immersion oil (10ml), soft rubber eyecups,<br>dust cover and instruction manual |  |

**Code**

3990.4000M

3900.5000M

**Description**

Vertex-PH LED Trinocular Inverted Microscope

Vertex-FL LED Trinocular Inverted Microscope  
with fluorescence

# Stereo Microscopes



## Ceti Steddy

The Steddy series of stereo microscopes are Ceti's most popular zoom microscopes. They provide high quality, wide field of view images, a wide zoom range and are highly robust and extremely well built, suitable for the most demanding uses. Each microscope in the range features a convenient 0.65X-4.5x zoom ratio and a pair of 10X super wide-field (FN22) eyepieces, giving a total magnification range of 6.5 to 45x. The optical quality is extremely good giving a bright, crisp 3D image of the specimen.

Two different base shapes are offered, each with dual LED illumination, and there is a choice of binocular and trinocular heads. The trinocular version includes a photo port to allow the connection of a digital camera to capture images or videos. Alternatively, the Steddy is also available with an integrated 3 Megapixel camera which includes software for PC or Mac.

The Ceti Steddy range is our most versatile stereo zoom microscope and is an excellent, professional grade instrument choice for industry, hobbyists, researchers and educational establishments.

### Features:

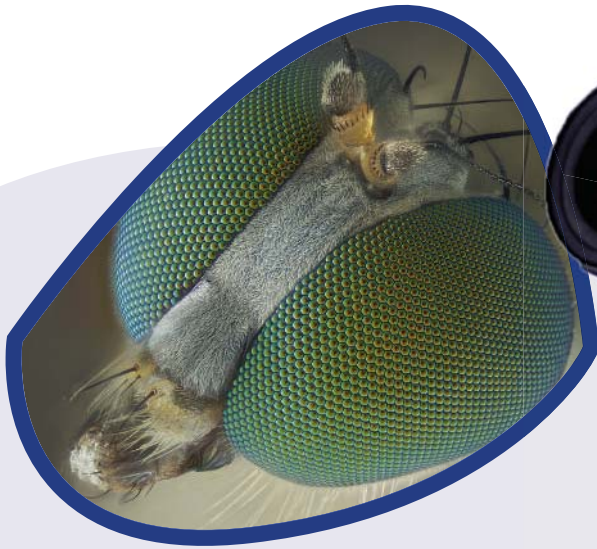
- Broad or "diamond" base depending on the model
- Super widefield 10X, FN22 eyepieces for maximum field of view
- Wide magnification zoom range of 3.35x to 180x
- All models feature a trinocular head with photo port or a built-in 3MP digital camera
- Dual LED illumination



| Model                   | Steddy-BR  | Steddy-T                              | Steddy-D   |
|-------------------------|--|---------------------------------------|--|
| <b>Optical Head</b>     | Trinocular, inclined at 45° with photo port                                |                                       | Trinocular, inclined at 45° with integrated 3MP digital camera |
|                         | Interpupillary Distance Adjustment (Siedentopf Type): 55 to 75mm           |                                       |  |
|                         | Dioptre adjustment on both eyepiece tubes                                  |                                       |  |
| <b>Eyepieces</b>        | 10x/22mm super widefield   |                                       |  |
| <b>Magnification</b>    | Zoom Ratio: 0.67 – 4.5x  |                                       |  |
|                         | Standard Magnification Range: 6.7 – 45x                                    |                                       |  |
|                         | Full Magnification Range (with optional lenses and eyepieces): 3.35 – 180x |                                       |  |
| <b>Working Distance</b> | 165mm  |                                       |  |
| <b>Focusing Mount</b>   | Rectangular support with dual coarse focus knobs                           |                                       |  |
| <b>Stage</b>            | Broad base with 5W LED transmitted illumination                            | Diamond base with 5W LED illumination |  |
|                         | 2W LED reflected illumination, directional                                 | 8W LED ring light                     |  |
| <b>Focusing Knobs</b>   | Coaxial coarse with safety stop and tension adjustment                     |                                       |  |
| <b>Mains Power</b>      | 220 – 240V/50 – 60Hz   |                                       |  |
| <b>Supplied with</b>    | Two rubber eyecups, dust cover, instruction manual and blue filter         |                                       |  |

| Code       | Description  |
|------------|--|
| 7600.0000M | Ceti Steddy-BR Trinocular Stereo Microscope (Broad-Base)                             |
| 7500.0000M | Ceti Steddy-T Trinocular Stereo Microscope (Diamond-Base)                            |
| 7500.9000M | Ceti Steddy-D Trinocular Stereo Microscope (Diamond Base) with Integrated 3MP Camera |

# Stereo Microscopes



## Varizoom

**Ceti's Varizoom Binocular Stereo Microscopes are our highest specification stereoscopic zoom microscopes with a parallel zoom system utilising optics of the highest quality.**

A sturdy, rectangular focussing mount enables stability whilst zooming and focussing and the broad stand provides a comfortable base when manipulating samples.

Integrated, directional episcopic LED lighting brightly illuminates the sample without the need for awkward goose neck light guides and the transmitted LED lighting provides cool lighting, especially important when working with biological or heat-sensitive samples. Separate intensity controls are located at the rear of the stand so they do not encroach into the working area.

### Features:

- Broad, flat base for comfortable working
- Super widefield 10X, FN22 eyepieces for maximum field of view
- Wide magnification zoom range of 4x to 320x utilising parallel zoom optics
- Optional eyepieces and objectives to easily adjust the zoom magnification range
- Dual LED illumination with separate intensity controls



| Model                          | Varizoom-6  | Varizoom-8 | Varizoom-10 |
|--------------------------------|---|------------|-------------|
| Optical Head                   | Binocular, inclined at 20°  |            |             |
|                                | Interpupillary Distance Adjustment (Siedentopf Type): 55 to 75mm      |            |             |
|                                | Dioptre adjustment on both eyepiece tubes                             |            |             |
| Eyepieces                      | 10x/22mm super widefield  |            |             |
| Zoom Ratio                     | 6:1   | 8:1        | 10:1        |
| Magnification Range (Standard) | 8x to 48x   | 8x to 64x  | 8x to 80x   |
| Magnification Range (Total)    | 4x to 192x  | 4x to 256x | 4x to 320x  |
| Working Distance               | 78mm (with Plan Apo 1x/WF)  |            |             |
| Focusing Mount                 | Rectangular support with dual coarse and fine focussing knobs         |            |             |
| Stage                          | Frosted glass / Black and white contrast plate                        |            |             |
|                                | 2 slide clip holders  |            |             |
| Illumination                   | Directional epi-illumination, attached under the optical head, LED 5W |            |             |
|                                | Fixed transmitted illumination, built into the base, LED 5W           |            |             |
| Mains Power                    | 220 – 240V/50 – 60Hz  |            |             |
| Supplied with                  | Two rubber eyecups, dust cover, instruction manual and blue filter    |            |             |

**Code**

7777.0006

7777.0008

7777.0000

**Description**

Ceti Varizoom-6 6:1 Stereoscopic Zoom Microscope

Ceti Varizoom-8 8:1 Stereoscopic Zoom Microscope

Ceti Varizoom-10 10:1 Stereoscopic Zoom Microscope

Medline Scientific is proud to be the sole UK distributor for the PreciPoint M8 and the new O8 digital microscope/scanners. PreciPoint have been designing and manufacturing high quality, brilliantly engineered products in Germany since 1982. The M8 was introduced in 2017 as a truly unique digital microscope and scanner. In 2018 PreciPoint unveiled the O8, similar in many ways to the M8 but dedicated to working with oil immersion objectives. Here are some key features of the M8 and O8...

- Whole Slide Scanning - Scan whole slides and selected regions of interest with air and oil objectives up to 100x in under 60 seconds.
- All-in-one device - The M8 and O8 serve both as a digital microscope and a scanner, thus offering completely new possibilities for your workflow
- Empower your application - The M8 and O8 are the perfect working tool for various demanding applications such as haematology or oncology research
- Live remote control - Control the M8 and O8 from anywhere at any time and simultaneously work with colleagues for second opinions

To arrange a demonstration in your laboratory please contact us and see how the PreciPoint M8 or O8 can speed up your productivity!



Medline Scientific c/o Calibre Scientific  
Unit 11 A&B  
Telford Way (off Whittle Way)  
The Advanced Manufacturing Park  
Catcliffe  
Rotherham  
S60 5GP  
Tel: 0114 224 2257  
e-mail: [sales@medlinescientific.com](mailto:sales@medlinescientific.com)  
Alternatively, please visit our website at  
[www.medlinescientific.com](http://www.medlinescientific.com)

