



Efficient use of laboratory space

# Incubated Shakers

# Incubated Shakers

## > Do you want to control your laboratory equipment remotely?

Monitor and control your lab equipment in real-time - anytime, anywhere- using only a smartphone.



LC GreenBox



Stackable type - ISS

Stackable up to 3 units



Floor type - ISF

Large capacity



Tabletop type - IST

For small lab space

## High Performance

### > Wide speed range at a heavy load

- Application of DD(Direct Drive) motor and Triple Cam System allow a stable shaking speed at heavy loads, Provides high torque, low vibration and stable shaking at high speed level. (ISF-7100/7200, ISS-7100/7200 models)
- Smooth, quiet, and uniform shaking even at strong shaking operation with an easy maintenance BLDC motor. (IST-3075/4075, ISS-3075/4075 models)

**DD Shaking System** Patented

JEIO TECH

Powerful DD motor for large-capacity shaking  
The triple cam system provides stable operation with high load samples.

(patent registration : 10-1678160)

### > Wide temperature control range, and outstanding temperature uniformity

- A high-speed fan ensures a uniform temperature variation and rapid temperature recovery after the door opens.
- Outstanding temperature uniformity with a sealed silicon on the door.

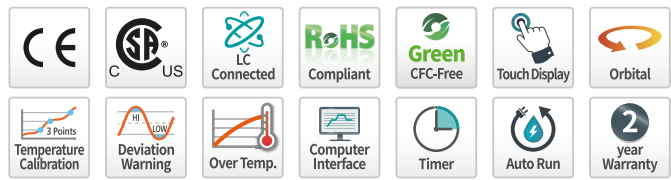
### > Features for precise control of temperature and shaking

- Available to precise temperature control with 3-point calibration.
- Stable heating and shaking control by Microprocessor PID controller.
- Auto-tuning function to minimize the impact of the ambient temperature.

### > Structural features

- Three operating modes: Temperature & Shaking, Temperature, or Shaking.
- Easy observation with a high-brightness/low-consumption LED lamp.
- Interior of stainless steel material with strong corrosion resistance.

Temperature Calibration		
	Uncalibrated	Calibrated
Calibration 1	30.0 °C	31.2 °C
Calibration 2	40.0 °C	39.6 °C
Calibration 3	50.0 °C	49.0 °C



## Convenience

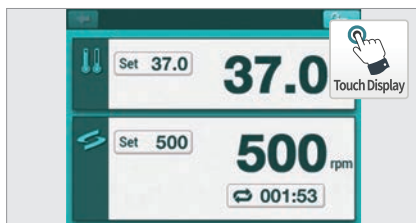
- Intuitive LCD touch screen controller with easy icons and a logical menu layout.
- Count-down timer with easy setup.
- Convenient PC communication with RS-232 and USB port for the external operation and data collection.
- Two-way communication, status check, data recording, and storage.
- Cleanliness and maintenance by a Spill drain port with an easy-to-open valve.
- The platform stops where it starts, which is useful for repetitive tests to be enhanced reproducibility. Suitable for the automated administration or sampling processes.
- Convenient observation of samples without affecting the environment in the chamber and easy structure for quick attach/detach of samples.



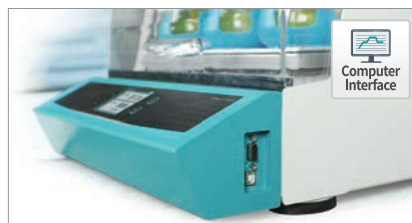
## Safety

- Safe testing environment by the smooth acceleration and deceleration control.
- Smooth shaking start and stop control prevents the leakage of chemicals from flasks or test tubes.
- Check the belt when the platform is not working properly. (Not provided for ISS-7000, ISF series)
- Automatic rpm adjustment when device instability occurs. (High rpm, overload, weight imbalance, etc.)
- Automatic run when it gets power back after power failure.
- Alarm when deviations occur in temperature and shaking speed.
- Overcurrent protection.
- Mechanical over-temperature limiter. (High)
- Environment-friendly CFC-free refrigerant.
- Audible and visible door opening alarm.

※ Some of the above contents are limited to specific models.



Color LCD touch screen.



USB, RS-232 connection port provided.



Spill drain port for clean internal management.



Easy to attach and detach large-volume sample (ISF) thanks to the inclined structure. (registered design 30-2014-0060254)



Viewing window and LED lighting for internal observation.



Safe use with over temperature protection function.

# Incubated Shakers Multi-stackable type

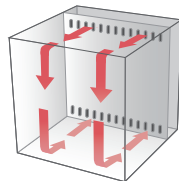


Watch our introduction video

## Stackable up to 3 units for the maximum space efficiency

ISS Multi-stackable type is recommended to those who want to make the most efficient use of limited space, it can be placed 3 units in a minimal space. Shaking performance up to 250rpm is guaranteed even with 3 stacked units.

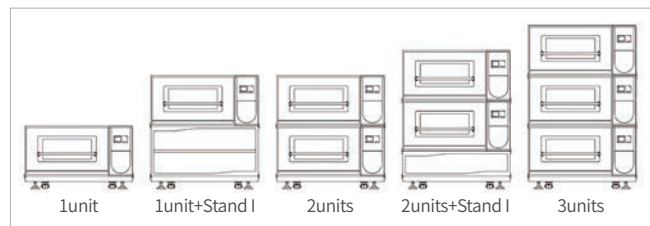
- The 198L chamber fits up to six of 4L flasks and thirty-nine of 250ml flasks. When 3 units are stacked, the capacity increases threefold.
- Lift-up door and rail-type platform for easier sample loading.
- Stand is an optional accessory that enhances user convenience. The height of the Incubated Shaker can be adjusted to the user's height, providing a more ergonomic laboratory environment.
- Casters are provided basically for easy moving.
- Electronic/Mechanical over-temperature limiters.
- Applied a direct drive motor that has outstanding durability, a 5-year warranty of the motor.



Internal airflow



ISS-7100R / 7200 / 7200R



A variety of stacking combinations.

## Specification

Model	ISS-7100	ISS-7100R	ISS-7200	ISS-7200R
<b>Temperature</b>				
Range (°C / °F) <sup>1)</sup>	Amb. +10 to 80 / Amb. +18 to 176	Amb. -20 (Min. 4) to 80 / Amb. -36 (Min. 7.2) to 176	Amb. +10 to 80 / Amb. +18 to 176	Amb. -20 (Min. 4) to 80 / Amb. -36 (Min. 7.2) to 176
Fluctuation at 37°C in flask (±°C / °F)	0.1 / 0.18	0.1 / 0.18	0.1 / 0.18	0.1 / 0.18
Variation at 37°C in flask (±°C / °F)	0.6 / 1.08	0.5 / 0.90	0.6 / 1.08	0.5 / 0.90
Refrigerator (Hp)	-	1/6	-	1/6
<b>Shaking system</b>				
Motion type	Orbital	Orbital	Orbital	Orbital
Speed range (rpm)	30 to 400 (stackable : 30 to 250)	30 to 400 (stackable : 30 to 250)	30 to 300 (stackable : 30 to 200)	30 to 300 (stackable : 30 to 200)
Max. speed per permissible load (rpm)	1 unit only 400 (max. 20 kg / 44.1 lbs)	1 unit only 400 (max. 20 kg / 44.1 lbs)	1 unit only 300 (max. 20 kg / 44.1 lbs)	1 unit only 300 (max. 20 kg / 44.1 lbs)
	Stacked units 250 (max. 15 kg / 33.1 lbs) 200 (max. 20 kg / 44.1 lbs)	Stacked units 250 (max. 15 kg / 33.1 lbs) 200 (max. 20 kg / 44.1 lbs)	Stacked units 200 (max. 15 kg / 33.1 lbs) 150 (max. 20 kg / 44.1 lbs)	Stacked units 200 (max. 15 kg / 33.1 lbs) 150 (max. 20 kg / 44.1 lbs)
Amplitude size (mm / inch, dia.)	25.4 / 1	25.4 / 1	50.8 / 2	50.8 / 2
Speed stability <sup>2)</sup> (rpm, %)	±1	±1	±1	±1
Timer (count-down)	999 hr 59 min.	999 hr 59 min.	999 hr 59 min.	999 hr 59 min.
<b>Dimension (1 unit)</b>				
Chamber volume (L / cu ft)	198 / 7.0	198 / 7.0	198 / 7.0	198 / 7.0
Platform (W x D, mm / inch)	755 x 520 / 29.7 x 20.5	755 x 520 / 29.7 x 20.5	755 x 520 / 29.7 x 20.5	755 x 520 / 29.7 x 20.5
Interior (W x D x H, mm / inch)	809 x 624 x 393 / 31.9 x 24.6 x 15.5	809 x 624 x 393 / 31.9 x 24.6 x 15.5	809 x 624 x 393 / 31.9 x 24.6 x 15.5	809 x 624 x 393 / 31.9 x 24.6 x 15.5
Exterior (W x D x H, mm / inch) <sup>3)</sup>	1 unit ; 1307 x 996 x 755 / 51.5 x 39.2 x 29.7 1 unit+stand-I or 2 units stacked ; 1307 x 996 x 1355 / 51.5 x 39.2 x 53.3 2 units+stand-II stacked ; 1307 x 996 x 1655 / 51.5 x 39.2 x 65.2 3 units stacked ; 1307 x 996 x 1955 / 51.5 x 39.2 x 77.0			
Net weight (Kg / lbs)	300 / 661.4	320 / 705.5	300 / 661.4	320 / 705.5
<b>Electrical requirements (230V, A)</b>	60Hz, 3.7	50Hz, 3.7	60Hz, 5.6	50Hz, 5.6
<b>Cat. No.</b>	AAH238131K AAH238132K	AAH238231K AAH238232K	AAH239131K AAH239132K	AAH239231K AAH239232K
<b>Electrical requirements (120V, A)</b>	60Hz, 7.1	60Hz, 10	60Hz, 7.1	60Hz, 10
<b>Cat. No.</b>	AAH238115U	AAH238215U	AAH239115U	AAH239215U

1) The temperature control range of the ISS-7100 and ISS-7200 models are from 10°C above the ambient temperature of the equipment. (15°C to 40°C) to 80°C The temperature control range of the ISS-7100R and ISS-7200R models are from 20°C below the ambient temperature (18°C to 35°C) of the device to 80°C. (However, the lowest control temperature is 4°C)

2) Actual rpm allowable error for set rpm is 1rpm if setting is less than 100rpm, ±1% if setting is higher than 100rpm.

3) Product height: 600mm, height of Stand I: 600mm, height of Stand II: 300mm, height of wheel attachment: 155mm.

# Incubated Shakers

## Stackable type

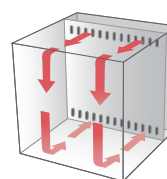
### Stackable up to 2 units

ISS Stackable type is recommended to those who want to make the most efficient use of limited space, it can be placed 2 units in a minimal space. Shaking performance up to 250rpm is guaranteed even with 2 stacked units.

- Transparent observation window with a bright LED lamp for sample observation without affecting the chamber's internal environment.
- Two height-adjustable shelves are provided to increase sample capacity, and it let the user use as like Temperature chambers or Refrigerators.
- Powerful shaking speed up to 500rpm.
- Use of easily maintained BLDC motor, allowing smooth, silent, and uniform shaking, even at strong shaking operation.
- Includes internal power outlet with a safety cover.
- Retractable casters for easy moving. (Optional)
- Electronic/Mechanical over-temperature limiters.



ISS-3075R



Internal airflow



2 stacked units

### Specification

Model	ISS-3075		ISS-3075R		ISS-4075		ISS-4075R	
<b>Temperature</b>								
Range (°C / °F)	Amb. +5 to 80 / Amb. +9 to 176		Amb. -20 (Min. 4) to 80 / Amb. -36 (Min. 7.2) to 176		Amb. +5 to 80 / Amb. +9 to 176		Amb. -20 (Min. 4) to 80 / Amb. -36 (Min. 7.2) to 176	
Fluctuation at 37°C in flask (±°C / °F)	0.1 / 0.18		0.1 / 0.18		0.1 / 0.18		0.1 / 0.18	
Variation at 37°C in flask (±°C / °F)	0.5 / 0.9		0.5 / 0.9		0.5 / 0.9		0.5 / 0.9	
Refrigerator (Hp)	-		1/6		-		1/6	
<b>Shaking system</b>								
Motion type	Orbital		Orbital		Orbital		Orbital	
Speed range (rpm)	20 to 500 (stackable : 20 to 250)		20 to 500 (stackable : 20 to 250)		20 to 500 (stackable : 20 to 250)		20 to 500 (stackable : 20 to 250)	
Max. speed per permissible load (rpm)	500 (max. 10 kg / 22.0 lbs) 400 (max. 15 kg / 33.1 lbs) 250 (max. 15 kg / 33.1 lbs) - Stacked		500 (max. 10 kg / 22.0 lbs) 400 (max. 15 kg / 33.1 lbs) 250 (max. 15 kg / 33.1 lbs) - Stacked		500 (max. 10 kg / 22.0 lbs) 400 (max. 21 kg / 46.3 lbs) 250 (max. 21 kg / 46.3 lbs) - Stacked		500 (max. 10 kg / 22.0 lbs) 400 (max. 21 kg / 46.3 lbs) 250 (max. 21 kg / 46.3 lbs) - Stacked	
Amplitude size (mm / inch, dia.)	19.1 / 0.75		19.1 / 0.75		19.1 / 0.75		19.1 / 0.75	
Speed stability <sup>2)</sup> (rpm, %)	±1		±1		±1		±1	
Timer (count-down)	999hr 59min		999hr 59min		999hr 59min		999hr 59min	
<b>Dimension</b>								
Chamber volume (L / cu ft)	80 / 2.8		80 / 2.8		150 / 5.3		150 / 5.3	
Platform (W x D, mm / inch)	350 x 350 / 13.8 x 13.8		350 x 350 / 13.8 x 13.8		450 x 450 / 17.7 x 17.7		450 x 450 / 17.7 x 17.7	
Interior (W x D x H, mm / inch)	440 x 440 x 418 / 17.3 x 17.3 x 16.5		440 x 440 x 418 / 17.3 x 17.3 x 16.5		540 x 540 x 518 / 21.3 x 21.3 x 20.4		540 x 540 x 518 / 21.3 x 21.3 x 20.4	
Exterior (W x D x H, mm / inch)	578 x 815 x 854 / 22.8 x 32.1 x 33.6		578 x 815 x 854 / 22.8 x 32.1 x 33.6		678 x 895 x 934 / 26.7 x 35.2 x 36.8		678 x 895 x 934 / 26.7 x 35.2 x 36.8	
Quantity of shelves (standard/max.)	2 / 8		2 / 8		2 / 11		2 / 11	
Net weight (Kg / lbs)	153 / 337.3		160 / 352.7		183 / 403.4		190 / 418.9	
<b>Electrical requirements (230V, A)</b>	60Hz, 6.2	50Hz, 6.2	60Hz, 7.9	50Hz, 7.9	60Hz, 6.2	50Hz, 6.2	60Hz, 7.9	50Hz, 7.9
<b>Cat. No.</b>	<b>AAH23431K</b>	<b>AAH23432K</b>	<b>AAH23531K</b>	<b>AAH23532K</b>	<b>AAH23631K</b>	<b>AAH23632K</b>	<b>AAH23731K</b>	<b>AAH23732K</b>
<b>Electrical requirements (120V, A)</b>	60Hz, 9.5		60Hz, 13		60Hz, 9.5		60Hz, 13	
<b>Cat. No.</b>	<b>AAH23415U</b>		<b>AAH23515U</b>		<b>AAH23615U</b>		<b>AAH23715U</b>	

1) The temperature control range of the ISS-3075 and ISS-4075 models are from 5°C above the ambient temperature (15°C to 40°C) to 80°C. The temperature control range of the ISS-3075R and ISS-4075R models is from 20°C lower than the ambient temperature. (18°C to 35°C) of the device to 80°C. (However, the lowest control temperature is 4°C)

2) Actual rpm allowable error for set rpm is ±1rpm if setting is less than 100rpm, ±1% if setting is higher than 100rpm.

# Incubated Shakers

## Tabletop type

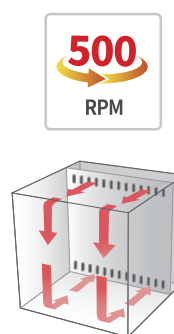
### Convenient sample observation

IST is suitable to use on a table and recommended to a user who wants to observe samples during incubating through a lift-up transparent acrylic door and an internal LED lamp.

- Front panel design for easy device control.  
Inclined front panel design to make a good visibility and convenient control of the controller.
- Door structure considering easy sample loading.
  - Lift-up door for more efficient use of space and convenient sample removal and installation.
  - Gas spring lid supports for smooth opening and closing.
- Powerful shaking performance up to 500rpm.
- Use of easily maintained BLDC motor, allowing smooth, silent, and uniform shaking, even at strong shaking operation.
- Mechanical over-temperature limiters.



IST-3075R



Internal airflow



Lift-up door type

### Specification

Model	IST-3075		IST-3075R		IST-4075		IST-4075R	
<b>Temperature</b>								
Range (°C / °F)	Amb. +5 to 80 / Amb. +9 to 176		Amb. -15 (Min. 15) to 80 / Amb. -27 (Min. 27) to 176		Amb. +5 to 80 / Amb. +9 to 176		Amb. -15 (Min. 15) to 80 / Amb. -27 (Min. 27) to 176	
Fluctuation at 37°C in flask (±°C / °F)	0.1 / 0.18		0.1 / 0.18		0.1 / 0.18		0.1 / 0.18	
Variation at 37°C in flask (±°C / °F)	0.5 / 0.90		0.5 / 0.90		0.5 / 0.90		0.5 / 0.90	
Refrigerator (Hp)	-		1/6		-		1/6	
<b>Shaking system</b>								
Motion type	Orbital		Orbital		Orbital		Orbital	
Speed range (rpm)	20 to 500		20 to 500		20 to 500		20 to 500	
Max. speed per permissible load (rpm)	500 (max. 10 kg / 22.0 lbs) 400 (max. 15 kg / 33.1 lbs)		500 (max. 10 kg / 22.0 lbs) 400 (max. 15 kg / 33.1 lbs)		500 (max. 14 kg / 30.9 lbs) 400 (max. 21 kg / 46.3 lbs)		500 (max. 14 kg / 30.9 lbs) 400 (max. 21 kg / 46.3 lbs)	
Amplitude size (mm / inch, dia.)	19.1 / 0.75		19.1 / 0.75		19.1 / 0.75		19.1 / 0.75	
Speed stability <sup>2)</sup> (rpm, %)	±1		±1		±1		±1	
Timer (count-down)	999 hr 59 min.		999 hr 59 min.		999 hr 59 min.		999 hr 59 min.	
<b>Dimension</b>								
Chamber volume (L / cu ft)	53 / 1.9		53 / 1.9		83 / 2.9		83 / 2.9	
Platform (W x D, mm / inch)	350 x 350 / 13.8 x 13.8		350 x 350 / 13.8 x 13.8		450 x 450 / 17.7 x 17.7		450 x 450 / 17.7 x 17.7	
Interior (W x D x H, mm / inch)	410 x 410 x 320 / 16.1 x 16.1 x 12.6		410 x 410 x 320 / 16.1 x 16.1 x 12.6		510 x 510 x 320 / 20.1 x 20.1 x 12.6		510 x 510 x 320 / 20.1 x 20.1 x 12.6	
Exterior (W x D x H, mm / inch)	440 x 785 x 510 / 17.3 x 30.9 x 20.1		440 x 785 x 510 / 17.3 x 30.9 x 20.1		540 x 890 x 510 / 21.3 x 35 x 20.1		540 x 890 x 510 / 21.3 x 35 x 20.1	
Net weight (Kg / lbs)	65 / 143.3		73 / 160.9		81 / 178.6		90 / 198.4	
<b>Electrical requirements (230V, A)</b>	60Hz, 4      50Hz, 4		60Hz, 5.5      50Hz, 5.5		60Hz, 4      50Hz, 4		60Hz, 5.5      50Hz, 5.5	
<b>Cat. No.</b>	<b>AAH23411K</b>	<b>AAH23422K</b>	<b>AAH23511K</b>	<b>AAH23522K</b>	<b>AAH23611K</b>	<b>AAH23622K</b>	<b>AAH23711K</b>	<b>AAH23722K</b>
<b>Electrical requirements (120V, A)</b>	60Hz, 7.5		60Hz, 10.1		60Hz, 7.5		60Hz, 10.1	
<b>Cat. No.</b>	<b>AAH23465U</b>		<b>AAH23565U</b>		<b>AAH23665U</b>		<b>AAH23765U</b>	

1) The temperature control range of the IST-3075 and IST-4075 models are from 5°C above the ambient temperature of the equipment. (15°C to 40°C) to 80°C. The temperature control range of the IST-3075R and IST-4075R models are from 15°C below the ambient temperature (18°C to 35°C) of the device to 80°C. (However, the lowest control temperature is 15°C)

2) Actual rpm allowable error for set rpm is ±1rpm if setting is less than 100rpm, ±1% if setting is higher than 100rpm.

# Incubated Shakers

## Floor type

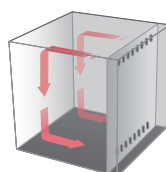
### Optimal solution for mass culturing

ISF has a big capacity as five of 6L flasks are installed simultaneously, so it is suitable for mass culturing.

- Transparent viewing window with LED lamps.
- Slight inclined door to observe samples easily in the chamber.
- Gas spring lid supports for smooth opening and closing.
- Easy moving for an installation or relocation, with sturdy casters.
- Electronic/Mechanical over-temperature limiters.
- Application of DD(Direct Drive) motor and Triple Cam System allow a stable shaking speed at heavy loads, Provides high torque, low vibration and stable shaking at high speed level.



ISF-7100R



Internal airflow



Easy to attach and detach large volume sample thanks to the inclined lid structure. (Registered design 30-2014-0060254)

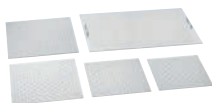
### Specification

Model	ISF-7100	ISF-7100R	ISF-7200	ISF-7200R
<b>Temperature</b>				
Range (°C / °F)	Amb. +5 to 80 / Amb. +9 to 176	Amb. -20 (Min. 4) to 80 / Amb. -36 (Min. 7.2) to 176	Amb. +5 to 80 / Amb. +9 to 176	Amb. -20 (Min. 4) to 80 / Amb. -36 (Min. 7.2) to 176
Fluctuation at 37°C in flask (±°C / °F)	0.1 / 0.18	0.1 / 0.18	0.1 / 0.18	0.1 / 0.18
Variation at 37°C in flask (±°C / °F)	0.5 / 0.90	0.5 / 0.90	0.5 / 0.90	0.5 / 0.90
Refrigerator (Hp)	-	1/6	-	1/6
<b>Shaking system</b>				
Motion type	Orbital	Orbital	Orbital	Orbital
Speed range (rpm)	30 to 500	30 to 500	30 to 300	30 to 300
Max. speed per permissible load (rpm)	500 (max. 15 kg / 33.1 lbs) 400 (max. 25 kg / 55.1 lbs) 350 (max. 35 kg / 77.2 lbs)	500 (max. 15 kg / 33.1 lbs) 400 (max. 25 kg / 55.1 lbs) 350 (max. 35 kg / 77.2 lbs)	300 (max. 20 kg / 44.1 lbs) 200 (max. 35 kg / 77.2 lbs)	300 (max. 20 kg / 44.1 lbs) 200 (max. 35 kg / 77.2 lbs)
Amplitude size (mm / inch, dia.)	25.4 / 1	25.4 / 1	50.8 / 2	50.8 / 2
Speed stability <sup>2)</sup> (rpm, %)	±1	±1	±1	±1
Timer (count-down)	999 hr 59 min.	999 hr 59 min.	999 hr 59 min.	999 hr 59 min.
<b>Dimension</b>				
Chamber volume (L / cu ft)	270 / 9.5	270 / 9.5	270 / 9.5	270 / 9.5
Platform (W x D, mm / inch)	755 x 520 / 29.7 x 20.5	755 x 520 / 29.7 x 20.5	755 x 520 / 29.7 x 20.5	755 x 520 / 29.7 x 20.5
Interior (W x D x H, mm / inch)	894 x 634 x 480 / 35.2 x 25 x 18.9	894 x 634 x 480 / 35.2 x 25 x 18.9	894 x 634 x 480 / 35.2 x 25 x 18.9	894 x 634 x 480 / 35.2 x 25 x 18.9
Exterior (W x D x H, mm / inch)	1128 x 854 x 1035 / 44.4 x 33.6 x 40.8	1128 x 854 x 1035 / 44.4 x 33.6 x 40.8	1128 x 854 x 1035 / 44.4 x 33.6 x 40.8	1128 x 854 x 1035 / 44.4 x 33.6 x 40.8
Net weight (Kg / lbs)	277 / 610.7	287 / 632.7	277 / 610.7	287 / 632.7
<b>Electrical requirements (230V, A)</b>	50 / 60Hz, 3.7	60Hz, 5.6    50Hz, 5.6	50 / 60Hz, 3.7	60Hz, 5.6    50Hz, 5.6
<b>Cat. No.</b>	<b>AAH23342K</b>	<b>AAH23542K    AAH23541K</b>	<b>AAH23442K</b>	<b>AAH23642K    AAH23641K</b>
<b>Electrical requirements (120V, A)</b>	60Hz, 7.3	60Hz, 10	60Hz, 7.3	60Hz, 10
<b>Cat. No.</b>	<b>AAH23375U</b>	<b>AAH23575U</b>	<b>AAH23475U</b>	<b>AAH23675U</b>

1) The temperature control range of the ISF-7100 and ISF-7200 models are from 5°C above the ambient temperature of the equipment. (15°C to 40°C) to 80°C The temperature control range of the ISF-7100R and ISF-7200R models are from 20°C below the ambient temperature (18°C to 35°C) of the device to 80°C. (However, the lowest control temperature is 4°C)

2) Actual rpm allowable error for set rpm is ±1rpm if setting is less than 100rpm, ±1% if setting is higher than 100rpm.

### Universal Platform



#### Universal Platform

Basic accessories required to use Erlenmeyer flasks, test tubes, separated funnels, etc.

### Accessories for Universal Platform



#### Flask Clamp (SUS / Plastic)

Erlenmeyer flask mounting (50ml - 6L)  
High-strength spring maintains excellent clamping.



#### Starter Kit

Consisting of plastic clamps that are commonly used on Universal Platforms. 50ml, 100ml, 250ml, 500ml, 1L, 2L.



#### Funnel Clamp

Separated funnel mounting (250 ml - 2L) Easy detachment/attachment and stable clamping.



#### Test Tube Rack

Test tube mounting ( $\Phi 8$  mm -  $\Phi 35$  mm)  
Easily adjustable angle.



#### Microplate Holder

Various options for Microplate  
Single, Tower, Flat A (Large),  
Flat B (Small)



#### Lab Sticker

Excellent adhesion as size is 200x200mm, allowing for application to petri dishes, culture bottles, etc.

Temp. Range (°C): 15-60 Max. Speed (rpm): 250

### LC GreenBox



#### LC GreenBox

Monitor the operation status of the device in real time via the mobile app with a simple internet connection.

### Set Accessories



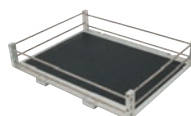
#### Spring Wire Rack

Fixed with 2-stage grid springs to accommodate various sample container shapes.



#### Dedicated Platform

Accessories (250 mL, 500 mL) installed on platform with maximum quantity of flask clamps.



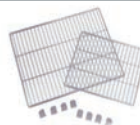
#### Rubber Mat

Convenient for use with culture bottles and petri dishes with rubber mat to prevent slipping on the bottom.



#### Universal Attachment

Rubber mat on the bottom and adjustable clamping rod make it a convenient structure for a wide range of applications.



#### Wire Shelf

Shelf and its bracket enabling sample loading.  
(applied to ISS-3075(R)/4075(R) series)



#### Retractable Foot Caster

Device that makes it easy to move/fix.  
(applied to ISS-3075(R)/4075(R) series)



#### Stand 1 & 2

When using 1 unit of the ISS-7000 model or when using more than 2 units stackable, different height of stands provide convenient access to a platform.



#### Stacking Kit

Fixing tool for stacked units.  
Applied to ISS series models.

※ Please refer to the website or ask your sales representative to be informed of the available rack types and clamp quantities on the Universal Platform and Spring Wire Rack.

## Lab Companion Korea

### Head office & factory

Add. 153, Techno 2-ro, Yuseong-gu, Daejeon, 34025, South Korea

### International sales office

Add. 10F-1005, 219, Gasandigital 1-ro, Geumcheon-gu, Seoul, 08501, South Korea

Tel. +82 2 2627 3816

Fax +82 2 3143 1824

E-mail [overseas@jeiotech.com](mailto:overseas@jeiotech.com)

### Lab Companion U.S.A. - Jeio Tech, Inc.

Add. 19 Alexander Road, Ste. 7, Billerica, MA 01821-5094, U.S.A.

Tel. +1 781 376 0700 Fax +1 781 376 0704

E-mail [info@jeiotech.com](mailto:info@jeiotech.com)

Your best business partner

Medline Scientific c/o Calibre Scientific  
Unit 11 A&B Telford Way (off Whittle Way)  
The Advanced Manufacturing Park  
Catcliffe  
Rotherham S60 5GP  
[enquiries@medlinescientific.com](mailto:enquiries@medlinescientific.com)  
+44 (0)114 224 2257

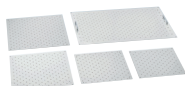




Establish Jeio Tech Network by Gateway. Remote-monitor of operating status through a mobile phone.

Gateway (2.4GHz, 100~240V, 50/60Hz)  
**AAAQ1011**

## Universal Platform



Universal Platform

## Accessories for Universal Platform



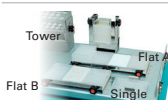
Flask Clamp  
(Stainless steel / Plastic)



Funnel Clamp



Test Tube Rack



Microplate Holder  
\* Universal platform is optional.



Lab Sticker  
\* Universal platform is optional.

## Set Accessories



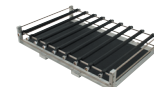
Spring Wire Rack



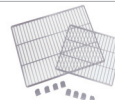
Dedicated Platform



Rubber Mat



Universal Attachment



Wire Shelve



Retractable Foot Caster

Description	ISS-7000(R)	ISS-3075(R)	ISS-4075(R)	ISF-7000(R)	IST-3075(R)	IST-4075(R)
Dedicated Platform (250ml) <sup>1)</sup>	AAA23637	AAA23611-V1	AAA23621-V1	AAA23634	AAA23611-V1	AAA23623-V1
Dedicated Platform (500ml) <sup>2)</sup>	AAA23636	AAA23612-V1	AAA23622-V1	AAA23635	AAA23612-V1	AAA23622-V1
Rubber Mat	AAA23535	AAA31531	AAA31532	AAA23534	AAA23531	AAA23532
Universal Attachment	AAA23513	AAA23511-V1	AAA23512-V1	AAA23505	AAA23511-V1	AAA23512-V1
Lab Sticker	AAA30551	AAA30551	AAA30551	AAA30551	AAA30551	AAA30551
Wire shelve	-	EDA8235	EDA8233	-	-	-
Stand 1 with Stacking kits (600mm height for stacking 1 unit)	AAA23571	-	-	-	-	-
Stand 2 with Stacking kits (300mm height for stacking 2 units)	AAA23572	-	-	-	-	-
Retractable Foot Caster	-	AAA23801	AAA23802	-	-	-
Stacking Kit	AAA23573	AAA23811	AAA23812	-	-	-

Description	Model	ISS-7000(R)	ISS-3075(R)	ISS-4075(R)	ISF-7000(R)	IST-3075(R)	IST-4075(R)	
		Platform Size	755 x 520	350 x 350	450 x 450	755 x 520	350 x 350	450 x 450
Universal Platform	Cat. No.	AAA23503-V4	AAA23501-V3	AAA23502-V3	AAA23503-V3	AAA23501-V3	AAA23502-V3	
Flask Clamp (Stainless steel)	50 ml	AAA23550	88	36	49	88	36	49
	100 ml	AAA23551	68	24	39	68	24	39
	250 ml	AAA23552	39	14	24	39	14	20
	300 ml	AAA23556	39	14	24	39	14	20
	500 ml	AAA23553	28	9	16	28	9	16
	1 L	AAA23554	18	6	9	18	6	9
	2 L	AAA23555	11	4	6	11	4	5
	2.8 L	AAA23557	8	2	5	8	2	4
	4 L	AAA23558	6	-	4	6	-	-
Flask Clamp (Plastic)	50 ml	AAA30570	88	36	49	88	36	49
	100~125 ml	AAA30571	48	19	29	48	19	29
	200 ml	AAA30572	33	13	21	35	13	21
	250 ml	AAA30573	33	13	19	35	13	19
	300 ml	AAA30574	33	12	19	35	12	19
	500 ml	AAA30575	24	9	12	24	9	12
	1 L	AAA30576	12	5	9	12	4	9
	2 L	AAA30577	8	4	5	8	2	4
	250 ml	AAA23562	15	4	6	15	4	6
Funnel Clamp	500 ml	AAA23563	10	3	4	10	2	4
	1 L	AAA23564	7	-	3	7	-	3
	2 L	AAA23565	5	-	-	5	-	-
Test Tube Rack <sup>3)</sup>	Ø8mm (86ea)	AAA23581	7	2	4	7	2	4
	Ø10mm (86ea)	AAA23582	7	2	4	7	2	4
	Ø12mm (58ea)	AAA23583	7	2	4	7	2	4
	Ø14mm (58ea)	AAA23584	7	2	4	7	2	4
	Ø17mm (32ea)	AAA23585	7	2	4	7	2	4
	Ø25mm (19ea)	AAA23586	7	2	4	7	2	4
	Ø30mm (10ea)	AAA23587	7	2	4	7	2	4
	Ø35mm (10ea)	AAA23594	7	2	4	7	2	4
	Ø50mm (4ea)	AAA23593	7	2	4	7	2	4
	Single	AAA23654	25	8	15	25	8	15
Microplate Holder	Tower	AAA23651	21	6	10	21	5	8
	Flat A (Large)	AAA23652	4	-	2	4	-	2
	Flat B (Small)	AAA23653	6	2	3	6	2	2

Description	ISS-7000(R)	ISS-3075(R)	ISS-4075(R)	ISF-7000(R)	IST-3075(R)	IST-4075(R)
Cat. No.	AAA23526	AAA31521-V1	AAA31522-V1	AAA23514	AAA23521-V1	AAA23522-V2
Spring Wire Rack	50 ml	45	16	25	45	25
	100 ml	28	9	16	28	16
	250 ml	18	4	9	18	9
	300 ml	18	4	9	18	9
	500 ml	15	4	5	15	5
	1 L	10	2	4	10	4
	2 L	6	1	2	6	2
2.8 L	4	1	2	4	2	

1) Platform set with maximum loading capacity of 250ml Flask clamps(stainless steel).

2) Platform set with maximum loading capacity of 500ml Flask clamps(stainless steel).

3) No declination.