



LABORTOPS

valid until 31.12.2024

MINI-CENTRIFUGE LLG-uniCFUGE 6

- **With Combi Rotor for 15 ml and 50 ml Tubes**
- **With Timer**
- **Easy Switching between RPM and RZB**

New



Page 3

General Laboratory Supply	2, 24	Bottles	18
Centrifugation	3	Ultrapure Water	19
Laboratory Equipment	4	Temperature Measurement	20
Occupational Safety	5	BOD Measurement	21
Chromatography	6 - 7	Heating	22
Sampling	8	Cryo Products	23
Conductivity Measurement	9	Weighing	25
pH Measurement	10 - 11	Stirring / Dispersing	26 - 27
Genomik / PCR	12	Shaking and Mixing	28 - 29
Microbiology	13	Ultrasonic Devices	30
Microscopy / Spectroscopy	14 - 15	Vacuum Technology	31
Liquid Handling / Pipettes	16 - 17	Peristaltic Pumps	32

Pressure atomizer LaboPlast®, HDPE



The pressurised spray has a working pressure of 4 bar. Extension for spray lance 30 cm available as an accessory.

- Wetted parts PE, PP, glass-fibre reinforced PA, V2A, FKM
- Bottle made of HDPE
- With a short spray nozzle
- Adjustable spray jet
- Graduation up to 1500 ml
- Temperature max. 30 °C

-25%

Capacity	Ext. diam.	Neck diam.	Height	PK	Cat. No.	Price	Now
ml	mm	mm	mm			GBP	GBP
1500	142	45	315	1	9.223 162	39.38	29.54

LLG-Labeling tapes



For labelling and colour coding of laboratory vessels and utensils. Strong and durable. Water-resistant. Can withstand temperatures ranging from -23 °C to 121 °C. The tapes are easy to write on and leave no residue when removed. Rolls of 12.7 m.

-15%

Width	Colour	PK	Cat. No.	Price	Now
mm				GBP	GBP
12.7	3 x blue, 3 x green, 3 x orange, 3 x red, 5 x white, 4 x yellow, 3 x pink	24	4.663 408	65.25	55.46
19.0	2 x blue, 2 x green, 2 x orange, 2 x red, 4 x white, 2 x yellow, 2 x pink	16	4.663 416	63.63	54.09
25.4	1 x blue, 2 x green, 1 x orange, 2 x red, 2 x white, 2 x yellow, 2 x pink	12	4.663 424	56.59	48.10

Pressure sprayer Turn'n'Spray



The practical 360° spray function allows you to spray overhead.

- Wetted parts HDPE, PP, FKM, V4A
- Plastic container made of HDPE
- Safety valve to compensate overpressure, max. 4 bar

-25%

Capacity	PK	Cat. No.	Price	Now
ml			GBP	GBP
1500	1	4.670 813	47.75	35.81

PARAFILM® M sealing film



Parafilm® M is resistant to many polar substances such as saline solutions, inorganic acids and alkaline solutions for up to 48 hours (After this time it may become brittle). Parafilm® M conforms to general FDA requirements if used below 55 °C.

Melting temperature: 60 °C
Continued use temperature: -45 °C ... 50 °C
Stretching ability: 200%

-24%

Type	Width	Length	PK	Cat. No.	Price	Now
	mm	m			GBP	GBP
PARAFILM® M	50	75	1	9.170 003	22.28	16.93
PARAFILM® M	100	38	1	9.170 002	21.31	16.20
PARAFILM® M	100	75	1	9.170 005	55.06	41.85
PARAFILM® M	500	15	1	9.170 004	48.17	36.61

Microcentrifuge Frontier™ FC5513-L,
with angle rotor
for 18 x 1.5/2.0 ml tubes



- ! - With Rotor
- For 15 ml and 2 ml Tubes
- up to 14 000 RPM



Compact high-speed microcentrifuge with modern touch-wheel for comfortable operation and reduced wear. Ideal suited for general laboratory applications.

- Backlit, two-lined LCD display
- Powerful brushless induction motor
- 10 acceleration and deceleration rates
- Memory for up to 99 parameters
- Lid locking system
- Imbalance sensor
- Small footprint
- Timer: 10 s to 99 h 59 min 59 s, continuous

-9%

Type	Max. rcf x g	Rotation speed rpm	Dimensions (W x D x H) mm	PK	Cat. No.	Price	Now
						GBP	GBP
FC5513-L	15994	200 ... 14000	277 x 356 x 236	1	4.699 640	1,105.20	1,005.73

Safe-lock reaction tubes, PP



- Autoclavable when open (121 °C, 20 min.)
- Can be opened and closed easily with one hand
- With frosted labelling area.
- Graduated
- 0.5 ml and 1.5 ml capacity Safe-lock reaction vessels can be centrifuged up to 30 000 x g

-5%

Capacity ml	Colour	PK	Cat. No.	Price	Now
				GBP	GBP
0.5	Transparent	500	9.409 320	44.73	42.49
1.5	Transparent	1000	9.409 331	45.18	42.92
2.0	Transparent	1000	9.409 341	61.74	58.65
0.5	Assorted colours	500	9.409 357	48.42	46.00
1.5	Assorted colours	1000	9.409 358	48.42	46.00
2.0	Assorted colours	1000	9.409 359	66.69	63.36

Mini centrifuge LLG-uniCFUGE 6



- ! - Complete Set with Combi Rotor
- Compact Design



New



The new LLG-uniCFUGE 6 is equipped with a combi rotor. This allows centrifugation of up to 4 x 50 ml or 8 x 15 ml vessels. The lid opens automatically on run completion.

- Easy switching between RPM and RCF operating mode
- Integrated imbalance detection with automatic switch-off
- Timer setting from 1 minute to 99 minutes or continuous operation
- Enhanced airflow design for extremely quiet performance and temperature control
- Brushless, wear-free motor
- Compact and lightweight design

Scope of supply: Mini centrifuge, combi rotor, 4 adapters for 15 ml vessels, power supply unit, T-Allen key, manual

-16%

Type	Max. rcf x g	Rotation speed rpm	Plug type	PK	Cat. No.	Price	Now
						GBP	GBP
LLG-uniCFUGE 6	1985	500 ... 4500	EU	1	6.263 532	464.36	390.06
LLG-uniCFUGE 6	1985	500 ... 4500	UK	1	6.263 533	473.74	397.94

Eppendorf Tubes® BioBased, PP,
with screw cap, HDPE



Eppendorf Tubes® BioBased are made of 90% bio-based plastic.

- Sterile
- Pyrogen-, DNase-, RNase- and DNA-free
- Lid with grooved sides
- Conical with a screw cap
- Large labelling field
- ISCC PLUS and ACT certification

-5%

Nom. capacity ml	Max. rcf x g	Package	PK	Cat. No.	Price	Now
					GBP	GBP
5	2500	2 bags of 100	200	4.687 109	67.95	64.55
15	19500	10 bags of 50	500	4.687 110	158.49	150.57
25	17000	8 bags of 25	200	4.687 111	73.53	69.85
50	19500	20 bags of 25	500	4.687 112	190.08	180.58

LLG-Lab Stool



The solid black plastic star base and the upholstery edge protector that runs all the way around guarantee a long working life.

- Resistant to all of the usual disinfectants and chemicals.
- Seat upholstery made of artificial leather, 400 mm diameter (soft and comfortable, washable and antibacterial) or soft-touch PU foam, 350 mm diameter (extremely robust, washable and antibacterial) in black.
- Seat height adjustment by gas spring.
- With certificate "Tested Safety" (GS mark).
- 10-year warranty, Made in Germany.

-20%

Material	Description	Seat height adjustment	PK	Cat. No.	Price	Now
		mm			GBP	GBP
PU foam	Castors	460 ... 630	1	6.287 757	136.03	108.82
Artificial leather	Castors	460 ... 630	1	6.287 758	132.48	105.98

LLG-Trolleys, Stainless Steel



The LLG transport trolley is made of CNS 18/10 stainless steel, material no. 1.4301. The load capacity per shelf is 80 kg.

-16%

Description	Dimensions (W x D x H) mm	PK	Cat. No.	Price	Now
				GBP	GBP
2 shelves, vertical spacing 585 mm	900 x 600 x 950	1	9.148 101	296.89	249.39
3 Shelves, vertical spacing 275 mm	900 x 600 x 950	1	9.148 104	354.58	297.85

LLG-Lab Chair



Entry model for healthy sitting! The generously proportioned seat and backrest with integrated lumbar support provide additional support and therefore offer the best laboratory ergonomics.

- Minimal joints: Hygienic design for easy cleaning and disinfection
- Resistant to disinfectants and chemicals: Resistant to all of the usual disinfectants and chemicals.
- Seat and backrest upholstery made of artificial leather (soft and comfortable, washable and antibacterial) or soft-touch PU foam (extremely robust, washable and antibacterial) in black.
- Quick adjustment: Every function can be operated comfortably and easily in a sitting position.
- Seat height adjustment by gas spring.
- The backrest is adjustable in height and inclination.
- With certificate "Tested Safety" (GS mark).
- 10-year warranty, Made in Germany.

Accessories: Multifunctional armrests (pair):
Adjustable in height, width and depth as well as swivelling.

-16%

Material	Description	Seat height adjustment	PK	Cat. No.	Price	Now
		mm			GBP	GBP
PU Foam	Castors	440-620	1	6.287 750	205.33	172.48
PU Foam	Stop and Go Castors, Foot Ring	620-890	1	6.287 752	249.42	209.51
Artificial Leather	Castors	440-620	1	6.287 753	201.41	169.18
Artificial Leather	Stop and Go Castors, Foot Ring	620-890	1	6.287 755	245.51	206.23
-	Armrests	-	1	6.287 756	86.61	72.75

Roller Steps, WEDO-Step, PP



Super easy to move thanks to three castors mounted on steel springs. With a load of up to 150 kg, it stands firmly on its integrated rubber support ring. TÜV and GS-tested safety.

-26%

Colour	Int. diam. mm	Ext. diam. mm	Height mm	PK	Cat. No.	Price	Now
						GBP	GBP
Blue	290	440	430	1	9.700 400	56.44	41.77
Red	290	440	430	1	9.700 401	56.44	41.77
Light grey	290	440	430	1	6.055 095	56.44	41.77
Black	290	440	430	1	6.289 953	56.44	41.77

Disposable Gloves TouchNTuff®, Nitrile

EN ISO 374-1 EN ISO 374-5 EN 421 EN 420
Type B



- Manufactured from nitrile, TouchNTuff® offers up to four times the puncture resistance of comparable natural-latex gloves, and three times the resistance of similar neoprene gloves
- With a unique "Thin Nitrile Technology" formulation, this glove offers easy donning and strong grip in wet or dry conditions
- AQL 1.5 (EN374)
- **Cat. III Low Chemical resistant**
- 100% nitrile, powder-free, green, 0.12 mm thick, length 240 mm, smooth
- Supplied in dispenser box containing 100 gloves

According to EN ISO 374-1:2016/Type B, EN ISO 374-5:2016, EN 421, and EN 420 Suitable for food handling.

Size	PK	Cat. No.	-30%	
			Price	Now
			GBP	GBP
S (6.5 - 7)	100	9.005 400	18.43	12.90
M (7.5 - 8)	100	9.005 401	18.43	12.90
L (8.5 - 9)	100	9.005 402	18.43	12.90
XL (9.5 - 10)	100	9.005 403	18.43	12.90

LLG-Panoramic Eyeshield



- CE approved EN 166 and EN 170
- Can be worn over any prescription spectacles
- Wide, fully adjustable headband
- 100% UV protection (up to 380 nm)
- Weight: 84 g

Lens	PK	Cat. No.	-25%	
			Price	Now
			GBP	GBP
clear, polycarbonate, 2C-1.2	1	6.291 832	9.72	7.29

Teaching skat game



Learning by Playing



Skat game with hazardous substance pictograms for classifying and labelling chemicals, with signal words.

Description	PK	Cat. No.	-5%	
			Price	Now
			GBP	GBP
skat game	1	6.327 764	13.48	12.81

Eye-Wash Bottle, Barikos KS



Barikos KS and Mini Barikos KS are maintenance-free models of eye wash bottles. Containing water, they can be kept ready for use for at least two years in a sealed state. Both models are ideal for first aid boxes and sets. All Barikos mentioned above eyewash bottles comply with EN 15154-4.

- Filled eyewash bottle, pH-neutral eyewash on a water basis without chemical additives
- Ergonomically shaped eye recess

Description	PK	Cat. No.	-12%	
			Price	Now
			GBP	GBP
Barikos KS, 620 ml, filled	1	9.005 009	16.48	14.50
Mini Barikos KS, 175 ml, filled	1	9.005 008	12.45	10.96

LLG-Glass-Syringes, borosilicate glass



With brown graduations. Sterilisable up to 134 °C.

-20%

Capacity ml	Material Cone	Nozzle type	PK	Cat. No.	Price GBP	Now GBP
1	Glass	Luer-Slip	1	6.272 088	4.70	3.76
2	Glass	Luer-Slip	1	6.272 089	2.21	1.77
5	Glass	Luer-Slip	1	6.272 090	2.55	2.04
10	Glass	Luer-Slip	1	6.272 091	3.38	2.70
20	Glass	Luer-Slip	1	6.272 092	6.34	5.07
50	Glass	Luer-Slip	1	6.272 093	23.63	18.90
1	Metal	Luer-Lock	1	6.272 094	3.38	2.70
2	Metal	Luer-Lock	1	6.272 095	2.88	2.30
5	Metal	Luer-Lock	1	6.272 096	3.97	3.18
10	Metal	Luer-Lock	1	6.272 097	5.18	4.14
20	Metal	Luer-Lock	1	6.272 098	8.15	6.52
50	Metal	Luer-Lock	1	6.272 099	25.39	20.31

Disposable Syringes HSW HENKE-JECT®, 2-part, non-sterile



Disposable syringes with PP barrel, and PE piston. Luer-Slip or Luer-Lock nozzle.

- Wipe-resistant scale
- Transparent cylinder
- Pyrogen-free, non-toxic and PVC-free

-24%

Capacity ml	Nozzle type	PK	Cat. No.	Price GBP	Now GBP
1	Luer-Slip	100	4.669 386	11.62	8.83
5	Luer-Slip	100	4.669 387	10.20	7.75
2	Luer-Slip	100	4.669 388	8.56	6.51
10	Luer-Slip	100	4.669 389	13.46	10.23
20	Luer-Slip	100	4.669 390	18.39	13.98
2	Luer-Lock	100	4.669 393	14.56	11.07
5	Luer-Lock	100	4.669 394	17.86	13.57
10	Luer-Lock	100	4.669 395	22.32	16.96
20	Luer-Lock	100	4.669 396	25.71	19.54

Syringe filter CHROMAFIL® Xtra, Polyester (PET)



Hydrophilic membrane for polar as well as non-polar solvents. The HPLC filter, especially suited for mixtures of water and organic solvents; for TOC/DOC determination; is not cytotoxic, and does not inhibit the growth of microorganisms and higher cells. Polyester filter with integrated glass fibre prefilter (GF/PET): recommended for solutions with a high load of particulate matter or highly viscous solutions.

-36%

Pore size µm	Filter diam. mm	Housing	PK	Cat. No.	Price GBP	Now GBP
0.20	25	PP-colourless/labelled	100	4.003 417	92.88	59.44
0.20	25	PP-colourless/labelled	400	4.003 418	370.80	237.31
0.45	25	PP-colourless/labelled	100	6.232 548	92.88	59.44
0.45	25	PP-colourless/labelled	400	4.003 416	370.80	237.31
1.20	25	PP-colourless/labelled	100	6.232 549	92.88	59.44
1.20	25	PP-colourless/labelled	400	6.233 172	370.80	237.31

Syringe filter CHROMAFIL® Xtra, regenerated Cellulose (RC)



Hydrophilic membrane with very low adsorption for aqueous and organic/aqueous liquids i.e. polar and medium polar sample solutions. Binding capacity for proteins 84 µg/25 mm filter.

-36%

Pore size µm	Filter diam. mm	Housing	PK	Cat. No.	Price GBP	Now GBP
0.20	13	PP-colourless/labelled	100	6.287 308	105.84	67.74
0.45	13	PP-colourless/labelled	100	6.287 309	105.84	67.74
0.20	25	PP-colourless/labelled	100	4.003 424	105.84	67.74
0.20	25	PP-colourless/labelled	400	4.003 425	424.80	271.87
0.45	25	PP-colourless/labelled	100	4.003 426	105.84	67.74
0.45	25	PP-colourless/labelled	400	6.233 891	424.80	271.87

Capillary columns



GC BPX90

90% Cyanopropyl Polysilphenylene-siloxane. For the fast separation of fragrances, aromatics, pesticides, PCB, isomers of fatty acid methyl esters.

- Bonded phase
- Highly polar
- Thermally stable
- Able to be solvent rinsed

-27%

Int. diam. mm	Length m	Film thickness μm	Temp. range $^{\circ}\text{C}$	PK	Cat. No.	Price GBP	Now GBP
0.25	15	0.25	80 ... 260 / 280	1	4.682 418	449.82	328.37
0.25	60	0.25	80 ... 260 / 280	1	6.225 162	1,252.53	914.35
0.25	30	0.25	80 ... 260 / 280	1	4.682 419	711.09	519.75
0.32	30	0.50	80 ... 260 / 280	1	4.682 420	734.13	535.91

HT8/Fast PCB

8% Phenyl Polycarborane-siloxane. Ultra high-temperature columns for polychlorinated biphenyl compounds (PCB), nitro-substituted aromatics, polynuclear aromatic hydrocarbons, pesticides and herbicides.

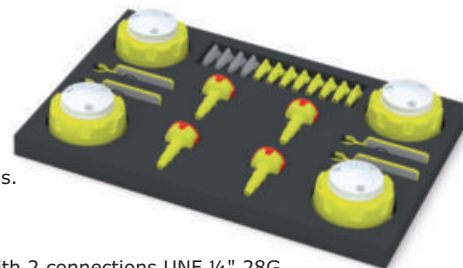
-27%

Int. diam. mm	Length m	Film thickness μm	Temp. range $^{\circ}\text{C}$	Type	PK	Cat. No.	Price GBP	Now GBP
0.10	10	0.10	-20 ... 360 / 370	Fast PCB	1	6.233 627	377.19	275.35
0.22	25	0.25	-20 ... 360 / 370	HT8	1	6.205 318	711.09	519.75
0.25	30	0.25	-20 ... 360 / 370	HT8	1	6.207 027	711.09	519.75
0.25	50	0.25	-20 ... 320 / 350	HT8	1	4.682 435	1,167.12	852.00
0.25	60	0.25	-20 ... 320 / 350	HT8	1	6.291 057	1,194.75	872.17
0.25	60	0.25	-20 ... 360 / 370	HT8-PCB GC	1	4.676 265	1,252.53	914.35

b.safe-Caps Starter Boxes, GL 45, PPS



Complete set



For up to 4 storage bottles.

Scope of supply:

Starter Box 1:

- 3 x b.safe-Cap GL 45 with 2 connections UNF 1/4" 28G
- 1 x b.safe-Cap GL 45 with 3 connections UNF 1/4" 28G
- 4 x Air valves with service life indicator
- 5 x Fittings yellow for tubing O.D. 3.2 mm
- 1 x Blind fitting

Starter Box 2:

- 4 x b.safe-Cap GL 45 with 3 connections UNF 1/4" 28G
- 4 x Air valves with service life indicator
- 8 x Fittings yellow for tubing O.D. 3.2 mm
- 4 x Blind fittings

-13%

Type	Thread	PK	Cat. No.	Price GBP	Now GBP
Starter Box 1	GL 45	1	6.313 845	186.48	162.24
Starter Box 2	GL 45	1	6.313 846	200.88	174.77

Safety caps, GL45, PPS/PP, PFAS Analytic



For PFAS-Analytic



Screw caps, with a freely movable insert made of PP, for connecting capillary tubing and air valve. For PFAS analysis of polyfluorinated chemicals according to DIN 38407-42/DIN 38414-14.

- Insert made of PP
- Fittings made of PP

Scope of supply: Cap, fittings (PP), air valve, service life indicator, labelling field



-20%

Capillary	Qty. Fittings	PK	Cat. No.	Price GBP	Now GBP
1	1 x 1.6/1 x 2.3/1 x 3.2 mm	1	6.324 051	76.41	61.13
2	2 x 1.6/2 x 2.3/2 x 3.2 mm	1	4.699 537	85.41	68.33
3	3 x 1.6/3 x 2.3/3 x 3.2 mm	1	4.699 539	89.91	71.93
4	4 x 1.6/4 x 2.3/4 x 3.2 mm	1	4.688 645	98.10	78.48

Waste SafetyCaps



Ideal for collecting liquid HPLC waste.

- Caps and fittings made of PP
- Body and hose barbs made of PTFE
- GL 45/DIN 45

-24%

Connections	PK	Cat. No.	Price GBP	Now GBP
3 x capillaries (2.3 ... 3.2 mm OD)	1	4.684 227	45.41	34.51
2 x capillaries (2.3 ... 3.2 mm OD) / 1 x hose (7 ... 9 mm OD)	1	4.684 228	41.22	31.33
2 x capillaries (2.3 ... 3.2 mm OD) / 1 x capillary (1.6 mm OD) / 1 x hose (7 ... 9 mm OD)	1	4.684 229	65.96	50.13



Sampler ViscoSampler, PTFE/FEP or PP



Ultra-pure sample collector for viscous substances. Especially for viscous substances. The medium is drawn in and expelled again with the suction piston. Easy to dismantle and clean.

Nominal capacity	Length	Diam.	Material	PK	Cat. No.	Price	
						GBP	Now
160	600	32	PTFE/FEP	1	6.803 102	357.39	300.21
300	1000	32	PTFE/FEP	1	9.303 960	405.77	340.85
650	2000	32	PTFE/FEP	1	9.303 961	573.71	481.92
160	600	32	PP	1	6.253 163	261.54	219.69
300	1000	32	PP	1	9.303 965	308.79	259.38
650	2000	32	PP	1	9.303 966	458.37	385.03

-16%

Disposable liquid samplers ViscoDispo, HDPE



Contamination-free sampling. Manufactured in the clean room, individually packaged and ready for immediate use. For high viscosity-media up to 100 000 mPas.

Capacity	Length	Sterile	PK	Cat. No.	Price	
					GBP	Now
100	500	-	20	9.303 732	130.37	109.51
100	500	+	20	9.303 733	154.04	129.39
200	1000	-	20	9.303 734	159.93	134.34
200	1000	+	20	9.303 735	202.41	170.02

-16%

Disposable tweezers, PS



For precise laboratory work, for gripping and holding small objects.

- Serrated handles
- Cleanroom manufactured (cleanroom class 7)
- Food-safe

Form	Length	Sterile	PK	Cat. No.	Price	
					GBP	Now
Pointed / angled: fine, smooth, curved gripping tip	130	+	100	4.670 759	54.81	42.20
Pointed: straight, inside, serrated tip	130	+	100	4.670 761	54.81	42.20
Wide tip: smooth and blunt tip	130	+	100	4.670 763	54.81	42.20

-23%

Disposable samplers PowderDispo for solids, HDPE



They are cleanroom manufactured, individually packed and always ready to use. Avoid expensive decontamination or cleaning of soiled samplers. Gamma-sterilised versions are also available. For taking cross-section samples of powdery or slightly cohesive substances.

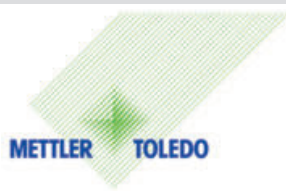
Capacity	Length	Sterile	PK	Cat. No.	Price	
					GBP	Now
60	300	+	20	6.282 453	126.86	106.56
60	300	-	20	6.282 452	109.62	92.08
100	500	+	20	6.259 428	141.93	119.22
100	500	-	20	9.303 736	127.40	107.02

-16%

Conductivity meter FiveGo™ F3



F3-Standard kit



Portable conductivity meter for fieldwork.

- Large, clear display, intuitively arranged buttons, simple menu structure
- The foldable tripod offers optimum readability on flat surfaces
- IP 67 waterproof and dustproof

Supplied with:

- F3-Meter:** Meter only
- F3-Standard kit:** Meter with LE703 sensor
- F3-Field kit:** Meter with LE703 sensor, carrying case

Specifications

Conductivity

Measuring range: 0.00 $\mu\text{S}/\text{cm}$... 200 mS/cm
Accuracy: $\pm 0.5\%$ of the measured value

Temperature

Measuring range: 0 ... 100 $^{\circ}\text{C}$
Accuracy: ± 0.5 $^{\circ}\text{C}$

TDS

Measuring range: 0.01 mg/l ... 200 g/l
Temperature compensation: Linear 0.00 ... 10.00%/ $^{\circ}\text{C}$, reference temperature 20 and 25 $^{\circ}\text{C}$
Calibration: 1 point, 3 predefined standards
IP code: IP 67 (meter + sensor)

-23%

Type	PK	Cat. No.	Price	Now
			GBP	GBP
F3-Meter	1	6.280 115	380.70	293.14
F3-Standard kit	1	6.280 116	513.00	395.01
F3-Field kit	1	6.280 117	558.00	429.66

Conductivity tester Pocket Tester SD30 EC



Pocket Tester with waterproof housing for measuring conductivity, TDS, salinity, and temperature.

- Three-colour LED lighting system (blue, green, red) and display symbols for easy handling
- 3 multifunction buttons with symbols
- Up to 3 calibration points
- With stability indicator, auto-hold, and auto-off function
- Battery operation (4 x AAA batteries)
- Easy battery and electrode replacement

Specifications

Conductivity: 0.01 ... 20.00 mS/cm
Resolution: 0.1 $\mu\text{S}/\text{cm}$, 1 $\mu\text{S}/\text{cm}$, 0.01 mS/cm
Accuracy: $\pm 1\%$ FS
TDS: 0.01 ... 20.00 ppt
Resolution: 0.1 ppm, 1 ppm, 0.01 ppt
Accuracy: $\pm 1\%$ FS

-7%

Type	PK	Cat. No.	Price	Now
			GBP	GBP
SD30 EC	1	4.694 728	122.40	113.83

Conductivity Standards



Conductivity standards tested and ISO 17025 certified at 25 $^{\circ}\text{C}$. Uncertainty of measurement of $\pm 1\%$. Directly traceable to N.I.S.T. Temperature dependence data is printed on the label as are lot numbers and expiry dates.

-35%

Type	Capacity	PK	Cat. No.	Price	Now
				GBP	GBP
$\mu\text{S}/\text{cm}$	ml				
1.3*	250	1	6.225 059	169.43	110.13
5	500	1	6.901 629	169.43	110.13
10	500	1	6.901 622	169.43	110.13
20	500	1	6.802 901	169.43	110.13
23.8	500	1	6.259 883	169.43	110.13
84	500	1	9.040 904	43.03	27.97
100	500	1	6.234 859	169.43	110.13
147	500	1	9.040 905	43.03	27.97
500	500	1	6.205 415	169.43	110.13
1000	500	1	6.901 670	169.43	110.13
1413	500	1	9.040 906	43.03	27.97
12880	500	1	9.040 907	43.03	27.97

*1.25 - 1.35 $\mu\text{S}/\text{cm}$ at 25 $^{\circ}\text{C}$.

pH Tester LIG-pH Pen



Cost-efficient pH tester, ideal for testing small amounts of liquid and in narrow vessels. The supplied storage container prevents the electrode from drying out.

- ATC from 0 °C to 50 °C
- Large, easy-to-read LCD display
- **3-point calibration**

Scope of supply: pH meter

Please order batteries separately.

Specifications

pH Measuring range:	0 ... 14
pH Accuracy:	±0.1
pH resolution:	±0.1
Dimensions with electrode (W x D x H):	36 x 20 x 210 mm
Dimensions electrode (diam. x L):	12 x 110 mm
Weight:	72 g
Power supply:	2 x 3 V CR2032 button cell
IP code:	IP 65
Warranty:	2 years

Type	PK	Cat. No.	Price	Now
LLG-pH Pen	1	6.263 690	34.38	27.50

-20%

LLG-Electrolyte solutions, KCl



Potassium chloride electrolyte for pH electrodes - Filling solution for reference electrolyte.

Type	Capacity	PK	Cat. No.	Price	Now
	ml			GBP	GBP
3 mol/l	250	1	9.041 371	6.58	5.26
3 mol/l	1000	1	9.041 370	15.42	12.34
3 mol/l, (AgCl saturated.)	250	1	9.041 372	8.78	7.02

-20%

Laboratory instrument inoLab® Multi 9310 IDS



- Automatic Data Memory for up to 5 000 Measured Values
- Complete Sets with Sensors



Whether pH, conductivity or dissolved oxygen, the inoLab® Multi 9310 can be turned into a pH, conductivity or oxygen meter by plugging in the appropriate sensor. The scope of delivery includes the device, stand with sensor holder, data transmission cable and universal plug-in power supply. The inoLab® Multi 9310 IDS is radio-ready for IDS radio modules.

Specifications

Display:	backlit graphic LCD
Memory:	manual: 500/automatic: 5000
Logger:	manual/time controlled
Interface:	Mini USB-B
Power supply:	Universal power supply, 100 to 240 V, 50/60 Hz

Type	Description	PK	Cat. No.	Price	Now
				GBP	GBP
9310	Single instrument	1	9.920 120	1,160.10	1,090.49
9310 Set 1	Incl. SenTix® 940	1	9.920 121	1,411.20	1,326.53
9310 Set 2	Incl. SenTix® 980	1	9.920 122	1,440.00	1,353.60
9310 Set 3	Incl. TetraCon® 925	1	9.920 123	1,668.60	1,568.48
9310 Set 4	Incl. FDO® 925	1	9.920 124	2,048.40	1,925.50
9310 Set C	Incl. SenTix® 940, TetraCon® 925	1	9.920 125	1,922.40	1,807.06

-6%

LLG-pH-Buffer solutions with colour coding in twin-neck dispensing bottles



The ready-to-use buffer solutions offer excellent quality, precision and advantages in use.

- Accuracy ±0.01, tested and certified at 25 °C
- Temperature dependence data table printed on the label
- Traceable to NIST
- Shelf-life: 24 months (pH 7 and 10) or 36 months (pH 4) from date of production

pH-value at 25 °C	Colour	Capacity	PK	Cat. No.	Price	Now
		ml			GBP	GBP
4.00	Red	250	1	9.040 868	6.06	4.55
7.00	Yellow	250	1	9.040 869	6.06	4.55
10.00	Blue	250	1	6.324 541	9.43	7.07

-25%

Multi-parameter measuring device Liquiline Mobile CML18, with USB data and charging cable

Mobile hand-held measuring device for measuring various parameters (pH/ORP, conductivity, temperature, dissolved oxygen) with digital Memosens sensors. All sensor data and measured values can be transferred to tablets or smartphones via a secure Bluetooth connection. With the free Memobase Pro app, all sample measurements can be traceably stored, documented, and visualised and sensors can be calibrated and adjusted using a guided procedure.

- Measurement of pH, conductivity, and oxygen in one device
- All calibration data, history, and measured values are stored directly in the electrode
- Data logger function for storing over 10000 measured values with time, date, and sample ID stamp
- True Plug & Play with pre-calibrated Memosens sensors enables quick changeover between parameters

The device can either be charged inductively via a pad (not included) or with the supplied USB data and charging cable.

Scope of supply: Multi-parameter measuring device, USB data and charging cable

Please order sensors separately.

Type	Dimensions (W x D x H) mm	Protection class	PK	Cat. No.	Price	Now
CML18	54 x 47 x 84	IP 66	1	4.696 930	GBP 945.99	GBP 681.05

Endress+Hauser 
People for Process Automation



- Portable Multimeter
- Digital Memosens Sensors
- Easy Change of Sensors

pH electrode CPL51E

Robust pH electrode with Memosens technology. Plastic electrode with glass membrane. The sensor is supplied pre-calibrated and ready for immediate use.



-29%

pH-value	Reference electrolyte	Temp. range °C	PK	Cat. No.	Price	Now
0 ... 14	3 mol/l KCl	-5 ... 80	1	4.696 933	GBP 251.10	GBP 178.28

pH electrode CPL53E

Versatile pH glass electrode with Memosens technology and particularly fast response time. The sensor is supplied pre-calibrated and ready for immediate use.



-33%

pH-value	Reference electrolyte	Temp. range °C	PK	Cat. No.	Price	Now
0 ... 14	3 mol/l KCl	-5 ... 100	1	4.696 934	GBP 317.29	GBP 212.52

pH-Elektrode CPL59E

Rugged pH glass electrode with Memosens technology. The ion trap offers high stability against oxidizing agents. Ideal for aggressive media and challenging samples. The sensor is supplied pre-calibrated and ready for immediate use.

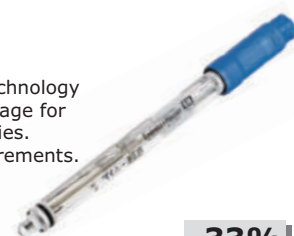


-33%

pH-value	Reference electrolyte	Temp. range °C	PK	Cat. No.	Price	Now
0 ... 14	3 mol/l KCl	0 ... 135	1	4.696 936	GBP 348.51	GBP 233.50

pH electrode CPL57E

The pH glass electrode with Memosens technology contains a reference system with salt storage for drift-free measurement at low conductivities. Ideal for pure and ultrapure water measurements. The sensor is supplied pre-calibrated and ready for immediate use.



-33%

pH-value	Reference electrolyte	Temp. range °C	PK	Cat. No.	Price	Now
0 ... 14	3 mol/l KCl	-5 ... 100	1	4.696 935	GBP 329.23	GBP 220.58

LLG-Universal indicator paper, strips



For the determination of pH value. Vial with a snap lid of 100 pre-cut indicator paper strips.

-34%

Range	Package contents	PK	Cat. No.	Price	Now
pH 1 ... 14	100 strips per vial with snap lid	100	9.129 805	GBP 3.64	GBP 2.40

Indicator paper, Duotest



Roll length 5 m, 10 mm width. With two colour zones.

-23%

Range	Package contents	PK	Cat. No.	Price	Now
pH 1.0 ... 4.3	Dispensing reel with 1 roll	1	9.130 356	GBP 13.77	GBP 10.60
1.0 ... 12.0	Dispensing reel with 1 roll	1	9.130 344	GBP 13.60	GBP 10.47
3.5 ... 6.8	Dispensing reel with 1 roll	1	9.130 359	GBP 13.77	GBP 10.60
5.0 ... 8.0	Dispensing reel with 1 roll	1	9.130 347	GBP 13.77	GBP 10.60
7.0 ... 10.0	Dispensing reel with 1 roll	1	9.130 362	GBP 13.77	GBP 10.60
9.5 ... 14.0	Dispensing reel with 1 roll	1	9.130 363	GBP 13.77	GBP 10.60

Gel electrophoresis tank
MultiSUB Mini



Designed for small and medium sample volumes. The small buffer volume of 225 ml increases the effectiveness of the analysis.

Scope of delivery:

Chamber with platinum electrodes, UV carrier 7 x 10 cm, 2 combs (8 teeth), additional gel casting locks.

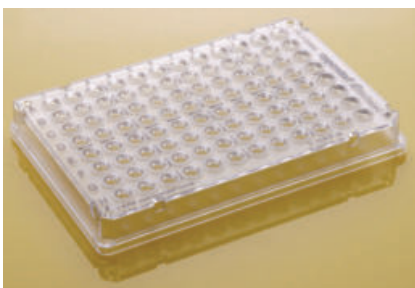
Specifications

Gel dimensions (W x L):	7 x 10 cm
Unit dimensions (W x L x H):	21 x 9 x 9 cm
Max. sample capacity:	7 x 10 cm tray, 64 samples
Buffer volume:	225 ml

-25%

Description	PK	Cat. No.	Price	Now
			GBP	GBP
MultiSUB Mini 10	1	9.584 650	271.49	278.62

PCR plates, 96/384 well,
Eppendorf twin.tec® Trace,
BioBased, LoBind, PCR clean



The plates are made of polymer, which is produced from approx. 86% recycled feedstock.

- Laser-engraved lot number and expiration date on each single plate
- Extremely thin-walled polypropylene wells guarantee optimum heat transfer
- Raised well rims
- Free of DNA, DNAase, RNase and PCR inhibitors
- With edge (skirted)
- ISCC PLUS certified
- ACT label

-5%

No. of wells	Nominal capacity µl	Frame	PK	Cat. No.	Price	Now
					GBP	GBP
96	150	with	25	4.699 496	154.80	147.06
96	250	half	25	4.699 494	160.20	152.19
384	45	with	25	4.699 495	245.70	233.42
96	20	half	25	4.699 492	132.30	125.69
384	45	with	25	4.699 493	197.10	187.25

Power supply nanoPAC-300 Mini
for gel electrophoresis tanks



The nanoPAC-300 is capable of running all horizontal multiSUB™ systems and vertical omniPAGE mini gel systems.

- Maximum constant current output of 400 mA
- Simple two-step feature to set a programmable change in voltage, current and time during the run
- Constant voltage up to 300 V
- Adjustable in 1 V and 1 mA increments
- Two parallel outputs
- Continuous run or time setting up to 999 minutes

-25%

Type	Rating	Supply requirements	PK	Cat. No.	Price	Now
	W				GBP	GBP
nanoPAC-300P Mini	60	300 V / 400 mA	1	6.272 711	452.93	339.70

Agarose for gel electrophoresis



These agaroses are suitable for the routine analysis of nucleic acids. AG agaroses are very environmentally friendly as no organic solvents are used in the production process.

Specifications

CAS:	9012-36-6
Appearance:	White to off-white powder
EEO:	≤ 0.13%
Gelling Point:	36 °C ±1.5 °C (1.5% gel)
Melting Point:	88 °C ±1.5 °C (1.5% gel)
Solubility:	Clear, colourless solution at 1 g in 100 ml water < 10%
Moisture:	< 10%
Gel Strength:	≥ 1200 g/cm ² (1% gel)
Sulphate:	< 0.20%
DNase, RNase, Protease, Endonuclease:	None Detected

-25%

Type	Capacity	PK	Cat. No.	Price	Now
	g			GBP	GBP
CSL-AG100	100	1	9.584 695	59.75	44.81
CSL-AG500	500	1	9.584 696	258.49	193.87

schuett count Colony Counter

schuett**biotec**.de



Designed for reliable and efficient counting of bacterial colonies and bacteriophage plaques growing on nutrient agar or nutrient discs/filter disks in Petri dishes. Provides ergonomic and relaxed working.

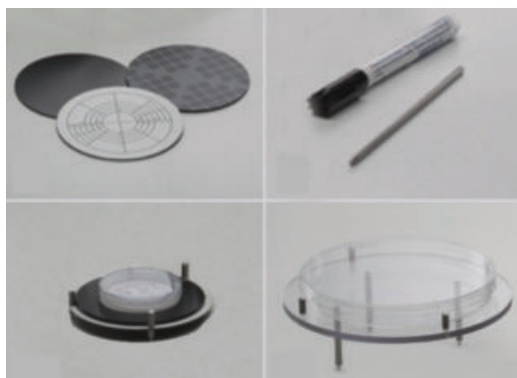
- For Petri dishes with Ø 90 mm (Ø 60 or 150 mm optional)
- Individually adjustable lighting, pressure sensitivity of the counter plate and volume
- LED lighting technology, is glare-free and gentle on the eyes
- Three types of illumination: from below, from the side and incident light (optional)
- High colony transparency and differentiation (agar or nutrient discs/filter), even with transparent colonies
- No heating of the samples
- Acoustic counter control (with volume control)
- 4-digit LED display (0 - 9999), clearly arranged foil keypad
- Average count calculation, data transfer via USB to PC.
- Imported in Excel, for further processing, storage and printing

Scope of supply: For 90 mm dia. Petri dishes: adapter (transparent) for illumination from below, adapter (black/white) for illumination from the side, contrast disc (black), USB cable, marker-pen with holder.

Type	PK	Cat. No.	Price	Now
			GBP	GBP
schuett count Colony counter, 100-240 V	1	9.521 940	1,161.00	1,102.95

-5%

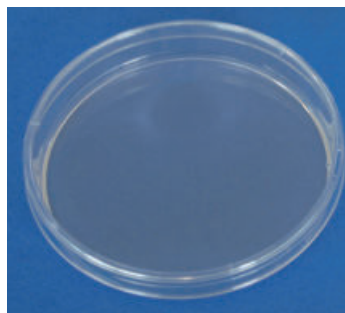
Accessories for schuett count Colony counter



Type	PK	Cat. No.	Price	Now
			GBP	GBP
Magnifier 3 x (100 mm dia.)	1	9.521 941	108.00	102.60
Magnifier 6-8 x (60 mm dia.)	1	9.521 942	153.00	145.35
LED overhead lamp	1	9.521 943	171.00	162.45
Adapter for Petri dishes, 50 to 60 mm dia.	1	9.521 944	37.80	35.91
Adapter for Petri dishes, 140 to 150 mm dia.	1	9.521 945	64.80	61.56
Adapter for other petri dish sizes on request.				

-5%

LLG-Petri dishes, PS



Made in the EU

Made of high-quality optical clear polystyrene. Produced under aseptic conditions in an ISO 6 cleanroom. Contact plate with a counting grid.

- With a smooth surface for an optimal distribution of the transport medium
- Stable thickness to prevent any deformations while using
- Stackable
- With or without vents
- Aseptic (90 mm diam.) or beta-irradiated sterile versions (all sizes)
- Packed in sleeves à 10 dishes or 20 dishes (90 mm diam. dishes)

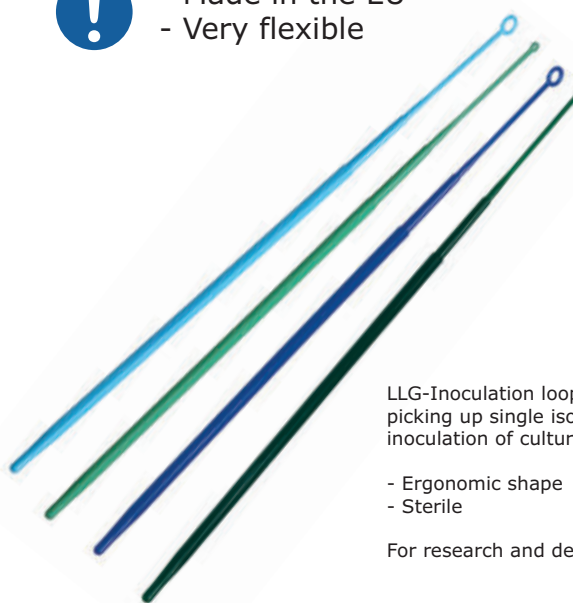
-20%

Ext. diam. mm	Description	Height approx. mm	PK	Cat. No.	Price	Now
					GBP	GBP
60	with triple vents, aseptic	14	1080	6.323 696	99.49	79.59
60	without vents, aseptic	14	1080	6.323 697	99.49	79.59
90	with triple vents, aseptic	16	480	6.285 823	55.49	44.39
90	without vents, aseptic	16	480	6.285 824	55.49	44.39
60	with triple vents, sterile	14	1080	4.678 371	119.89	95.91
60	without vents, sterile	14	1080	4.678 372	119.89	95.91
90	with triple vents, sterile	16	480	6.285 816	62.08	49.66
90	without vents, sterile	16	480	6.285 817	62.08	49.66
150	with triple vents, sterile	19	140	4.680 144	97.89	78.31

LLG-Inoculation loops, PS, sterile



- Made in the EU
- Very flexible



LLG-Inoculation loops are ideal for picking up single isolated colonies for inoculation of culture media.

- Ergonomic shape
- Sterile

For research and development only.

-20%

Length mm	Nominal capacity µl	Colour	Form	PK	Cat. No.	Price	Now
						GBP	GBP
195	1	dark green	Eyelet, fixed	1000	4.691 889	21.64	17.31
195	10	blue	Eyelet, fixed	1000	4.691 890	21.64	17.31
195	1	light green	Eyelet, flexible	1000	4.691 891	21.64	17.31
195	10	light blue	Eyelet, flexible	1000	4.691 892	21.64	17.31

Laboratory and research microscopes BA410E LED-Fluorescence

Professional microscope for numerous applications in biomedical research.

- Observation tube Siedentopf type, 360° rotating
- Wide-field eyepieces for spectacle wearers incl. eyecups
- Dioptre compensation on both eyepieces
- Adjustable illumination, quartz halogen according to Köhler with external lamp house
- Auto-OFF and Light Memory Function

Scope of supply:

Microscope, complete epi-fluorescence equipment, LUMOS FL LED high-performance light source, Halogen illumination 12 V/50 W, blue filter (Ø 45 mm), immersion oil (5 ml), armrest, mains cable, Allen key, dust cover

Please order fluorescence filter sets separately.

Type	Mag-nification	PK	Cat. No.	Price	Now
BA410E	4x, 10x, 40x, 100x	1	6.327 672	8,341.28	7,173.50

-14%

Inverted Routine microscope for live cell inspection, AE2000

- ! Incl. Plan Achromat lenses

Classic cell culture microscope for daily work in the laboratory.

- Infinity Optics [CCIS®]
- Observation Tube Siedentopf Type, Binocular -/Phototube 45°, F.N. 20
- Interpupillary Distance 48 mm - 75 mm
- Eyepieces High-Eyepoint N-WF 10x/20 mm provide dioptre adjustment for both eyes
- Side-facing quadruple nosepiece
- Illumination 6V/30W halogen with intensity control and sleeping mode
- Universal power supply 100 V-240 V (CE)
- Ø 45 mm blue, green interference and neutral density filters with filter slider, centring telescope, power cord, Allen hexagonal key, vinyl dust cover
- Interchangeable LED module available

Type	Description	PK	Cat. No.	Price	Now
AE2000	Trinocular	1	9.727 031	2,845.08	2,361.42

-17%

Inverted Microscope for advanced applications series AE31E, Trinocular LED fluorescence



- Incl. Fluorescence Module
- Light Memory
- Auto On-Off

Professional inverted research microscope for a wide range of applications.

- Observation Tube Siedentopf Type
- Wide-field eyepieces, incl. eyecups
- Diopter adjustment on both eyepieces
- Side facing nosepiece
- Illumination: Externally mounted lamp house, Koehler 6 V/30 W Quartz halogen with intensity control, automatic light switch-off

Scope of supply: Microscope, Epi-Fluorescence attachment with 3 position fluorescence filter cassette, LUMOS FL LED high-performance light source, dust cover, power cord, Allen key, blue, green interference and ground glass filters, phase ring Ph1, centring telescope, centring keys, spare fuse

Type	Mag-nification	PK	Cat. No.	Price	Now
AE31E	4x, 10x, 20x, 40x	1	6.325 390	8,341.28	7,173.50

-14%

Microscope Camera MOTICAM S



The next generation of Moticams offers solutions for a wide variety of applications in digital microscopy. Compact and robust, equipped with high-quality sCMOS sensors with many different resolutions and a fast USB 3.1 connection.

Type	Resolution	Sensor format	PK	Cat. No.	Price	Now
S6	6 MP	1/1.8" sCMOS	1	4.672 120	623.70	498.96
Pro S5 Lite	5 MP	2/3" sCMOS	1	4.672 121	1,077.30	861.84

-20%

Disposable cuvettes



Kartell

Disposable cuvettes for spectroscopy made of PS or PMMA for optimum transmission when using wavelengths from 340 to 800 nm (PS) or from 280 to 800 nm (PMMA). Measurement tolerance of $\pm 1\%$. Layer thickness: 10 mm.

-36%

Description	Capacity	Material	PK	Cat. No.	Price	Now
	ml				GBP	GBP
Standard cuvettes	4.5	PS	100	9.406 431	8.22	5.32
Semi-micro cuvettes, low form	1.5	PS	100	9.406 432	8.58	5.49
Semi-micro cuvettes, high form	2.5	PS	100	9.406 433	8.54	5.47
Standard cuvettes, 4 clear faces	4.5	PS	100	9.406 434	7.40	4.74
Standard cuvettes	4.5	PMMA	100	9.406 435	11.62	7.44
Semi-micro cuvettes, high form	2.5	PMMA	100	9.406 436	11.23	7.25
Semi-micro cuvettes, low form	1.5	PMMA	100	9.406 437	12.31	7.88
Standard cuvettes, 4 clear faces	4.5	PMMA	100	9.406 438	10.20	6.53

LLG-Cuvette rack, PP



Ideal for storing up to 16 cuvettes with a 12.5 mm width. Autoclavable at 121 °C.

-27%

Length	Width	Height	PK	Cat. No.	Price	Now
mm	mm	mm			GBP	GBP
210	70	35	1	4.682 061	8.83	6.45

Spectrophotometer LLG-uniSPEC 2



High-quality and cost-efficient UV/VIS spectrophotometers for pharmaceutical, biochemical and clinical lab applications. Suitable for different measurement types such as kinetics, wavelength scans, quantitative analysis, multi-wavelength and DNA/Protein analysis.

- Single beam system, grid with 1200 lines/mm
- Silicon photodiode detector
- Parallel port for printer output
- USB port
- 4-position cell holder (10 mm) included
- Additional cell holders are optionally available
- LCD
- Deuterium and tungsten lamp
- Automatic wavelength adjustment

Scope of supply: LLG-uniSPEC 2 Photometer, software for connection to PC, 4 glass cells, and 2 quartz cells.

Specifications

Optical System:	Single beam
Wavelength range:	190 to 1100 nm
Bandwidth:	2 nm
Wavelength accuracy:	± 0.5 nm
Stray light:	$\leq 0.1\%T$
Display:	128 x 64 Dots LCD
Dimension (W x D x H):	460 x 360 x 225 mm
Weight:	18 kg
Power supply:	220 V/50 Hz or 110 V/60 Hz

-13%

Type	Plug type	PK	Cat. No.	Price	Now
				GBP	GBP
LLG-uniSPEC 2	EU	1	6.263 610	2,429.84	2,113.96
LLG-uniSPEC 2	UK	1	6.263 611	2,443.93	2,126.22

LLG-Cuvettes, glass

LLG-Cuvettes have two clear windows, and two side walls and they are available as optical glass or in quartz variants. Each cuvette is supplied with a PTFE lid.

- Optical Glass: 335 to 2500 nm
- Quartz: 200 to 2700 nm



-18%

Type	Volume	Path length	PK	Cat. No.	Price	Now
	ml	mm			GBP	GBP
quartz glass	3.5	10	2	4.681 513	69.28	56.81
quartz glass	17.5	50	2	4.681 514	246.91	202.47
optical glass	3.5	10	4	4.681 515	46.18	13.27
optical glass	17.5	50	4	4.681 516	34.63	28.40

Bottle-top dispensers Calibrex™ solutae 530



Calibrex solute 530 dispensers have a PFA-coated plunger preventing the plunger and barrel from seizing together. This enables trouble-free distribution of salt solutions, weak and strong acids, as well as bases.

- 45 mm base thread
- Integrated calibration system
- Autoclavable at 121 °C fully assembled

Scope of delivery:

Delivery jet and stopper, feed tube, 3 alternative adapters (25, 28, 32 mm for 1 and 2.5 ml versions; 28, 32, 40 mm for 5 and 10 ml version; 32, 38, 40 mm from 25 ml onwards), QC certificate and operating instructions



-25%

Volume	Graduations	Accuracy max. vol. (± R%)	Precision max. vol. (≤ CV%)	PK	Cat. No.	Price	Now
ml	ml					GBP	GBP
0.1 - 1	0.02	0.6	0.17	1	6.281 547	366.37	274.78
0.25 - 2.5	0.05	0.6	0.17	1	6.281 548	366.37	274.78
0.5 - 5	0.1	0.6	0.1	1	6.281 549	366.37	274.78
1 - 10	0.2	0.6	0.1	1	6.281 550	366.37	274.78
2.5 - 25	0.5	0.6	0.1	1	6.261 221	455.27	341.45
5 - 50	1.0	0.6	0.1	1	6.261 222	495.83	371.87
10 - 100	1.0	0.6	0.1	1	6.261 223	563.16	422.37

Maxi pipette filler, 1 to 100 ml

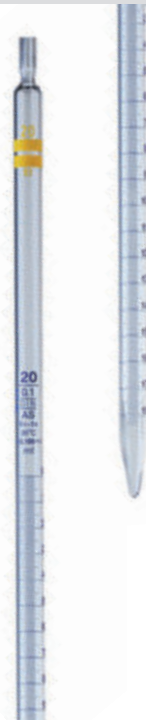


The large capacity bulb which works perfectly with all pipette sizes from 1 ml up to 100 ml.

-10%

Type	PK	Cat. No.	Price	Now
			GBP	GBP
Maxi pipette filler	1	6.238 525	48.33	43.50

LLG-Graduated pipettes, soda glass, class AS, type 3



- DIN EN ISO 835, DIN 12699
- Conformity-certified
- With batch date identification
- Calibrated to deliver (EX)
- Ring marks and graduations in permanent blue enamel

-20%

Nominal capacity	Graduations	Tolerance	Length	PK	Cat. No.	Price	Now
ml	ml	± ml	mm			GBP	GBP
1	0.01	0.007	360	10	6.272 200	12.89	10.31
2	0.02	0.01	360	10	6.272 201	12.89	10.31
5	0.05	0.03	360	10	6.272 202	13.39	10.71
10	0.1	0.05	360	10	6.272 203	15.46	12.37
20	0.1	0.1	450	10	6.272 204	22.58	26.06
25	0.1	0.1	450	10	6.272 205	33.30	26.64
50	0.1	0.2	720	10	6.272 206	108.36	86.69

Laboratory bottles, DURAN®, with retrace code, with screw cap



With blue PP screw cap and pouring ring.

-24%

Capacity	Diam.	Height with cap	Neck thread	PK	Cat. No.	Price	Now
ml	mm	mm	GL			GBP	GBP
25 *	36	74	25	10	4.679 006	80.04	60.83
50	46	91	32	10	4.679 003	85.34	64.86
100	56	105	45	10	4.679 004	73.13	55.58
250	70	143	45	10	4.679 005	81.80	62.17
500	86	181	45	10	4.679 007	101.80	77.44
1000	101	230	45	10	4.679 010	144.49	109.81
2000	136	265	45	10	4.679 008	325.23	247.17

*With specially shaped glass edge for improved pouring out (so that an additional plastic pouring ring is not required).

Multichannel microliter pipettes Transferpette® S-8/S-12, variable



- ! - Ergonomic Design
- Smooth-running

Low operating forces and a short stroke ensure relaxed pipetting, even during long pipetting series. Transferpette® S -8/-12 pipettes are available in 5 different models, covering the volume range from 0.5 µl to 300 µl.

- One-hand operation for right- and left-handed users
- Volume-change protection
- Easy Calibration technology: Calibration without tools
- Universal tip cone
- Completely autoclavable at 121 °C
- DE-M marking

Scope of supply: Transferpette® S -8/-12, supplied with performance certificate, 2 x TipBox filled with pipette tips from BRAND, shelf mount, reagent reservoir, mounting tool, labelling foil, silicone grease and 1 set of sealing rings



-17%

Type	Capacity	Tip	PK	Cat. No.	Price	Now
	µl	µl			GBP	GBP
S-8	0.5 ... 10	0.5 ... 20	1	9.280 170	627.80	521.07
S-8	5 ... 50	2 ... 200	1	9.280 171	627.80	521.07
S-8	10 ... 100	2 ... 200	1	9.280 172	627.80	521.07
S-8	20 ... 200	2 ... 200	1	9.280 173	627.80	521.07
S-8	30 ... 300	5 ... 300	1	9.280 174	627.80	521.07
S-12	0.5 ... 10	0.5 ... 20	1	9.280 175	719.46	597.15
S-12	5 ... 50	2 ... 200	1	9.280 176	719.46	597.15
S-12	10 ... 100	2 ... 200	1	9.280 177	719.46	597.15
S-12	20 ... 200	2 ... 200	1	9.280 178	719.46	597.15
S-12	30 ... 300	5 ... 300	1	9.280 179	719.46	597.15

Filter tips, racked in TipBox, sterile, Bio-Cert®



PP. With a hinged lid/push-on lid. Simply rotate 180° to change the closure method. Usable with a partially loaded multichannel pipette. Two different sizes. Stackable and repeatedly autoclavable at 121 °C (2 bar), acc. DIN EN 285.

-10%

Capacity	Package contents	PK	Cat. No.	Price	Now
µl				GBP	GBP
0.1 - 1	10 boxes of 96	960	9.409 723	106.92	96.23
0.5 - 10	10 boxes of 96	960	9.409 724	99.95	89.96
2 - 20	10 boxes of 96	960	9.409 726	86.27	77.64
5 - 100	10 boxes of 96	960	9.409 727	88.43	79.59
5 - 200	10 boxes of 96	960	9.409 728	88.43	79.59
50 - 1000	10 boxes of 96	960	9.409 729	104.40	93.96

Single channel microliter pipettes LLG-proMLP



- High quality **Made in France**
- Extremely lightweight while the robustness still remains
- Perfect ergonomics for the highest comfort
- Colour-coded push-button for quick operation
- Extremely low pipetting forces
- **Built-in volume locking** for error-free results
- **Tip ejector button***, adjustable for right- and left-handed users
- Completely autoclavable at 121 °C
- Including individual calibration certificates (according to EN ISO 8655)



*not available for 5 ml and 10 ml pipettes

Scope of supply:
Microliter pipette, calibration tool



-29%

Capacity	Increments	Colour code	PK	Cat. No.	Price	Now
µl	µl				GBP	GBP
0.2-2	0.002	dark orange	1	6.270 420	171.97	122.10
0.5-10	0.02	red	1	6.270 421	171.97	122.10
2-20	0.02	light yellow	1	6.270 422	171.97	122.10
10-100	0.2	light orange	1	6.270 423	171.97	122.10
20-200	0.2	dark yellow	1	6.270 424	171.97	122.10
100-1000	2	dark blue	1	6.270 425	171.97	122.10
500-5000	2	purple	1	6.270 426	171.97	122.10
1000-10000	20	light blue	1	6.270 427	171.97	122.10

LLG-Pipette carousel, ABS



LLG-Pipette carousel made of ABS for safe and comfortable storage of microlitre pipettes. The rotating stand allows quick access to the desired pipette.

- Space-saving storage of up to 6 single channel or multi-channel pipettes
- Suitable for common pipette brands
- Easy to clean

-20%

Description	PK	Cat. No.	Price	Now
			GBP	GBP
LLG-Pipette carousel	1	6.490 522	59.84	47.85

Wide-mouth bottles, soda-lime glass



Brown glass. Round thread neck in accordance with DIN 168.
Please order screw caps separately.

-24%

Capacity	Diam.	Height	Neck thread	PK	Cat. No.	Price	Now
ml	mm	mm	GL			GBP	GBP
100	50	92.5	40	56	6.270 392	40.55	30.82

Screw caps for wide-mouth bottles, PP/LDPE



Cap PP, seal LDPE

-20%

Neck thread	PK	Cat. No.	Price	Now
GL			GBP	GBP
40	100	9.072 195	12.86	10.29

LLG-Mini Narrow-neck vials, PP, Heavy Duty



Ideal for collecting, transporting and storing liquid samples.

- With screw cap
- Very stable design
- Transparent
- With graduation

-20%

Capacity	Diam.	Height	Thread external diam.	PK	Cat. No.	Price	Now
ml	mm	mm	mm			GBP	GBP
4	16	40	13	100	6.289 520	8.17	6.54
8	25	44	19	100	6.289 450	9.62	7.70
60	40	85	19	100	6.289 452	18.71	14.97
125	51	99	23	50	6.289 453	23.54	18.83

Bottles, wide-mouth, PE/PP, graduated



PE



PP

Wide neck for easy filling and emptying of liquid or powder samples.

- Conform to DIN 13316 and 168
- With PE or PP closure
- Food-safe

-36%

Capacity	Grad.	Material	Neck thread	PK	Cat. No.	Price	Now
ml	ml		GL			GBP	GBP
50	10	PE	32	10	6.323 780	9.77	6.25
100	20	PE	32	10	6.323 776	11.14	7.13
250	25	PE	45	10	6.323 778	14.95	9.57
500	100	PE	45	5	6.323 782	8.83	5.65
1000	100	PE	63	1	9.072 978	3.62	2.32
2000	100	PE	63	1	9.072 979	5.07	3.24
50	10	PP	32	10	6.323 781	10.29	6.59
100	20	PP	32	10	6.323 777	11.14	7.13
250	25	PP	45	10	6.323 779	14.95	9.57
500	100	PP	45	5	6.323 783	8.83	5.65
1000	100	PP	63	1	9.073 034	3.62	2.32
2000	100	PP	63	1	9.073 035	5.16	3.30

Square Media Bottles, PET, sterile



For safe storage and transportation of cell culture media. The bottles are manufactured at aseptically sterile production halls and then sent to gamma sterilisation. The bottleneck (32 mm) provides easy filling.

- Thick walls and crush-resistant corners
- Square shape
- Caps with large ridges, made of PE
- Embossed volume graduations

-31%

Nominal capacity	Dimensions (W x D x H)	PK	Cat. No.	Price	Now
ml	mm			GBP	GBP
125	53 x 53 x 105	40	9.073 276	90.45	62.41
250	59 x 59 x 147	45	9.073 277	111.38	76.85
500	77 x 77 x 174	21	9.073 278	62.37	43.04
1000	93 x 93 x 214	15	9.073 279	88.46	40.34

LLG-Wide mouth bottle, HDPE, round



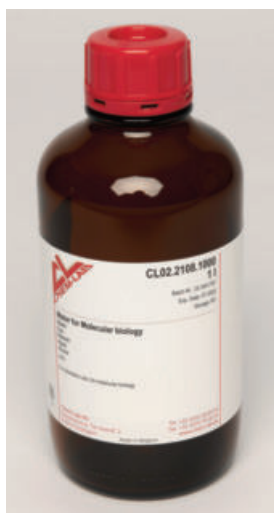
Ideal for easy filling, storage or transport of liquids, powders and granulates.

- With a screw cap made of PP
- Very good chemical resistance
- Autoclavable

-20%

Capacity	Diam.	Neck diam.	Height	PK	Cat. No.	Price	Now
ml	mm	mm	mm			GBP	GBP
30	34.6	21.0	59.1	12	4.692 544	6.21	4.97
60	39.2	21.1	81.5	12	4.692 545	8.01	6.41
125	50.3	28.3	94.7	12	4.692 546	9.89	7.91
250	60.9	32.8	127.0	12	4.692 547	14.93	11.94
500	72.7	44.0	164.0	12	4.692 548	20.35	16.28
1000	92.0	51.9	195.0	6	4.692 549	18.32	14.66
2000	119.0	90.8	236.0	1	4.692 550	9.17	7.34

Water, nuclease-free



For use in any molecular biology application. Nuclease-free water is prepared in a proprietary process, which yields DNase, RNase, and nuclease-free, deionized water without the use of chemical additives, such as diethylpyrocarbonate (DEPC).

-33%

Type	Nominal capacity	PK	Cat. No.	Price	Now
	ml			GBP	GBP
Water, nuclease-free	1000	1	4.675 029	36.04	24.15

Ultra-pure water system
OmniaTap xs^{touch} 8 Set, under-bench
version with OptiFill^{touch} bench dispenser
and replacement cartridges



- Incl. Replacement Filter Set
- Touch Display
- With External Dispenser



For pure and ultra-pure water type I + II. OmniaTap is the ideal system when both pure and ultra-pure water are needed in small quantities for analytical and life science applications in the laboratory. The integrated 7 l tank with recirculation keeps the water quality permanently at type II.

- Can be used with tap water
- Dispenser is pivotable up to 170°
- Digital control and monitoring unit OptiFilltouch with colour touch display
- Real-time TOC monitoring
- Adjustable limit values for conductivity and TOC
- Innovative monitoring and display of cartridge capacity
- Withdrawal volume is individually adjustable
- Permanent data storage of all quality parameters
- Password access and error memory
- 3 languages selectable: DE, EN, FR
- RS232 and USB interface

Applications:

OmniaTap xs^{touch} UV-TOC: Ultra trace analysis, ICP-MS, HPLC, TOC analysis
OmniaTap xs^{touch} UV-TOC/UF: Molecular and microbiology, cell culture media

Ultra-pure water system OmniaTap xs^{touch} in the under-bench version can be installed under a laboratory bench to save space. The external dispenser and monitoring unit OptiFill^{touch} are positioned on top of the bench.

Scope of supply: Ultra-pure water system, 2 x RO cartridges, 2 x ultra-pure water cartridges, sterile filter capsule (0.2 µm), sterile overflow, sterile vent filter

Specifications

Pure water type II:

Pure water output (at 15 °C): 8 l/h
Resistivity at 25 °C: 15 ... 10 MΩ x cm
Conductivity at 25 °C: 0.067 ... 0.1 µS/cm

Ultra pure water type I:

Ultra pure water output: Up to 2 l/min

-14%

Type	TOC value	Endotoxins	PK	Cat. No.	Price	Now
	ppb	EU/ml			GBP	GBP
8 UV-TOC Set	<2	-	1	6.493 090	6,761.99	5,815.31
8 UV-TOC/UF Set	<5	<0.001	1	6.493 091	7,171.64	6,167.58

Wireless Temperature/Humidity Logger testo Saveris 2-H1



Temperature and humidity monitoring. All relevant temperature and humidity readings are recorded and sent to the Testo cloud via WLAN and can be called up at any time via smartphone, tablet or PC.

- Plug & Play, no software is required
- Automatic data transfer via WLAN to the Testo-Cloud
- High data security due to double storage of all values: in the wireless data logger and the Testo-Cloud
- Reliable alerting
- Flexible data access

Scope of supply: Wireless Data Logger (WLAN) with display for measuring temperature and relative humidity, capacitive humidity sensor internally, including USB cable, wall bracket, batteries, calibration protocol

Specifications

Sensor type:	NTC internal
Measuring range temperature/Accuracy:	-30 ... 50 °C/±0.5 °C (±1 digit)
Measuring range humidity/Accuracy:	0 ... 100% R.H./±2% R.H. (±1 digit)
Resolution:	0.1 °C
Dimensions:	95 x 75 x 30.5 mm
Weight (including batteries):	240 g
Messtakt:	5 s ... 24 h (15 min preset)
Communication cycle:	1 min ... 24h (15 min preset)
Storage:	10000 measured values per channel
Power supply:	4 x AA AIMn mignon cells

				-5%
Type	PK	Cat. No.	Price	Now
Saveris 2-H1	1	6.283 293	303.30	288.14
			GBP	GBP

Infrared Thermometers TFI 260



Non-contact measurement of the surface temperature with infrared. Ideal for fast and secure measurements of moving or energized parts and food. With batteries and factory calibration certificate.

Specifications

Measurement range:	-60 °C to +550 °C
Accuracy:	±2 °C or 2% (at 0 °C to +550 °C), whichever is larger
Resolution:	0.1 °C
Distance : spot ratio:	12:1
Operating temperature:	0 °C to +50 °C
Response time:	1 sec.
Emissivity factor:	0.95 fixed (0.1 to 1.0 possible)
Dimensions (L x W x H):	153 x 115 x 48 mm
Weight (with batteries):	177 g
Power supply:	2 x 1.5 V AAA, replaceable
IP code:	IP 20

				-21%
Type	PK	Cat. No.	Price	Now
TFI 260	1	6.272 762	59.40	46.93
			GBP	GBP

Digital hand held thermometer TTX 200

For measuring the core temperature with a fixed probe with cable and handle.

- Very large display with large figures
- Replaceable battery
- Factory calibration certificate



Specifications

Temperature range:	-30 ... +199.9 °C
Resolution:	0.1 °C
Accuracy:	±0.5 °C (-30 ... +100 °C), otherwise ±1%
Sensor length/diam.:	120 mm/3 mm
Cable length:	600 mm
Power supply:	CR 2032
Protection class:	IP 55

				-21%
Type	PK	Cat. No.	Price	Now
TTX 200	1	6.291 272	96.30	76.08
			GBP	GBP

Thermostatic cabinets



The cabinets are equipped with sockets in the interior for connecting stirrers.

- Temperature range 2 °C to 40 °C, continuously adjustable in steps of 0.1 °C
- Illuminated LED display of preset and current temperatures
- Ideal for BOD determination at 20 °C
- With Standard door or glass door

Specifications

Coolant: R600a
 Fan: Axial, delivery rate 320 m³/h
 Power supply: 220-230 V/50 Hz

-5%

Type	Capacity	External dimensions (W x D x H) mm	PK	Cat. No.	Price	Now
	l				GBP	GBP
TC 135 S	135	600 x 600 x 850	1	9.699 142	1,833.48	1,741.81
TC 710 S	288	600 x 654 x 1684	1	6.492 794	2,988.00	2,838.60
TC 720 S	488	750 x 769 x 1684	1	6.492 795	3,528.00	3,351.60
TC 140 G*	140	600 x 600 x 850	1	9.699 146	2,115.72	2,009.93
TC 715 G*	288	600 x 654 x 1684	1	6.492 988	3,141.00	2,983.95

* With glass door

BOD sensor system



Measuring systems for the reliable determination of 90 to 999 ppm BOD. Complete with sensor heads and multi-position magnetic stirrer.

- The sensor heads are screwed directly onto the BOD bottles
- Automatic storage of 5 results in 24-hour intervals
- Measured readings in mg/l (ppm) can be read directly on the sensor at any time
- Protected against splashing water (IP 54)

Scope of supply BOD sensor system 6: 6-position magnetic stirrer, each 6 BOD sensors incl. batteries, 500 ml brown glass bottles, KOH reservoirs and magnetic stirring rods

Scope of supply BOD sensor system 10: 10-position magnetic stirrer, each 10 BOD sensors incl. batteries, 500 ml brown glass bottles, KOH reservoirs and magnetic stirring rods

Specifications

BOD range: 90 ... 999 ppm
 Display: LED (3 digits)
 IP code: IP 54

-5%

Type	Description	PK	Cat. No.	Price	Now
				GBP	GBP
BOD sensor system 6	6 positions	1	6.317 212	1,402.20	1,332.09
BOD sensor system 10	10 positions	1	6.317 213	2,151.00	2,044.31
BOD sensor set	500 ml brown glass bottle with BOD sensor, KOH reservoir, stirring rod	1	4.666 791	207.00	196.65
BOD sensor	Single sensor	1	4.666 790	199.80	189.81

Bottles (Karlsruhe bottles) with stoppers



The special bottleneck of the Karlsruhe bottles absorbs the water which is displaced by the stopper of the electrode. This construction guarantees clean working and ensures at the same time that the test results are not adulterated by unwanted entry of oxygen into the samples.



-5%

Capacity	Length*	PK	Cat. No.	Price	Now
ml				GBP	GBP
100	20	1	9.920 514	33.75	32.06
100	60	1	9.920 515	35.64	33.86
250	20	1	9.920 513	33.84	32.15
250	60	1	9.920 509	36.09	34.29

* Stopper handle length (mm)

Muffle furnaces series L, max. 1100 °C, with flap door



Nabertherm
MORE THAN HEAT 30-3000 °C

L 5/11/B410

For daily laboratory use. Max. temperature 1100 °C. The flap door can be used as a work platform.

- Dual shell housing made of textured stainless steel sheets for low external temperatures and high stability
- Adjustable air inlet integrated indoor
- Exhaust air outlet in the rear wall of a furnace
- All insulation materials used are classified as non-carcinogenic according to TRGS 905, Class 1 or 2
- Standard connection 220-240 V 1/N/PE 50/60 Hz
- Heating from two sides

-8%

Type	Nom. capacity	External dimensions (W x D x H) mm	PK	Cat. No.	Price	
					GBP	GBP
L 3/11/B510	3	385 x 330 x 405	1	6.321 436	2,763.00	2,541.96
L 5/11/B410	5	385 x 390 x 460	1	6.092 769	3,492.00	3,212.64
L 9/11/B410	9	415 x 455 x 515	1	6.302 391	3,600.00	3,394.80
L 15/11/B410	15	415 x 555 x 515	1	6.056 446	4,347.00	3,999.24
L 24/11/B410*	24	490 x 555 x 580	1	6.206 861	5,769.00	5,307.48

* 400 V 3/N/PE 50/60 Hz connector as standard

Serial Extraction Apparatus behrotest® for Soxhlet-/Fat-Extraction

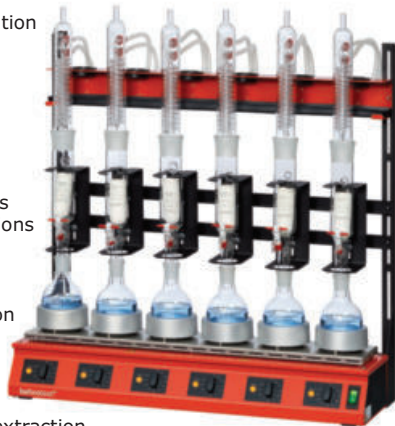


For Soxhlet and Extraction

behr
Labor-Technik

behrotest® serial heaters are the economical and user-friendly solution for the classic Soxhlet or fat extraction:

- complete with reaction vessels, extraction spacers and coolers
- energy for each sample position is individually adjustable
- cooling water distributor ensures even cooling at all sample positions
- practical stand for holding the condensers securely between extractions
- mounts for holding the extraction spacers after removing the sample vessels
- The extractors with stopcock do away with the need for any additional distillation after extraction



-5%

Type	Description	Capacity ml	PK	Cat. No.	Price	
					GBP	GBP
R 304 S	4-position, with stop-cock	30	1	9.043 035	2,227.50	2,116.13
R 306 S	6-position, with stop-cock	30	1	9.043 036	2,999.70	2,849.72
R 604 S	4-position, with stop-cock	60	1	9.043 039	2,319.30	2,203.34
R 606 S	6-position, with stop-cock	60	1	9.043 040	3,169.80	3,011.31
R 104 S	4-position, with stop-cock	100	1	9.043 029	2,293.20	2,178.54
R 106 S	6-position, with stop-cock	100	1	9.043 028	3,136.50	2,979.68
R 254 S	4-position, with stop-cock	250	1	9.043 042	2,804.40	2,664.18

Universal Ovens UN and UF

memmert



UF30

SingleDISPLAY: ControlCOCKPIT with one colour display

Specifications

Type designation:

N = Natural convection
F = Forced air circulation

Working temperature range:

at least 5 °C above ambient to +300 °C

Setting temperature range:

+20 to +300 °C

Setting accuracy:

up to 99.9 °C: 0.1 °C/
from 100 °C: 0.5 °C

Power supply:

230 V, 50/60 Hz

-5%

Type	Nom. capacity L	Max. grids	Included grids	PK	Cat. No.	Price	
						GBP	GBP
UN30	32	3	1	1	9.869 681	1,116.00	1,061.06
UN55	53	4	1	1	9.869 682	1,294.20	1,229.49
UN75	74	6	2	1	9.869 683	1,577.70	1,498.82
UN110	108	5	2	1	9.869 684	1,821.50	1,739.93
UF30	32	3	1	1	9.869 697	1,327.50	1,261.13
UF55	53	4	1	1	9.869 698	1,599.30	1,519.34
UF75	74	6	2	1	9.869 699	1,892.70	1,798.07
UF110	108	5	2	1	9.869 700	2,210.40	2,099.88

Crucible tongs, 18/10 steel

LABORBEDARF BOCHEM LAB SUPPLY



Electro-polished. With bow and gripping tips.

-18%

Length mm	PK	Cat. No.	Price	
			GBP	GBP
200	1	9.310 120	7.61	6.24
220	1	9.310 122	7.95	6.52
250	1	9.310 125	8.71	7.14
300	1	9.310 130	9.44	7.74

Chest freezer LTF, up to -60 °C

! Environmentally Friendly Coolant



The single compressor technology provides reliable low-temperature freezing and a high-temperature uniformity.

- LED display
- Visual and acoustic alarm
- Adjustable high/low temperature alarm
- 100% HCFC & CFC Free
- With castors and key lock

-32%

Type	Nom. capacity	External dimensions (W x D x H)	No. of Baskets	PK	Cat. No.	Price	Now
	L	mm				GBP	GBP
LTF85	71	550 x 645 x 895	1	1	6.262 989	2,842.15	1,932.66
LTF225	133	720 x 698 x 890	1	1	7.981 478	2,981.44	2,027.38
LTF325	284	1.262 x 698 x 890	3	1	6.260 569	3,155.55	2,145.77
LTF425	368	1.562 x 698 x 890	4	1	6.280 142	3,387.72	2,303.65
LTF535	476	1.662 x 758 x 932	3	1	6.263 021	4,605.65	3,131.84

Liquid nitrogen container BIO GT, aluminium



For storage and transport of biological materials.

- Transport handle
- With vacuum valve
- Loose lid-on plug
- Canister made of stainless steel

-5%

Type	Capacity	External dimensions (Ø x H)	PK	Cat. No.	Price	Now
	L	mm			GBP	GBP
GT 3	3.7	250 x 405	1	9.524 383	1,028.62	986.69
GT 9	9.3	358 x 450	1	6.322 966	1,159.34	1,101.37
GT 11	12.2	308 x 630	1	9.524 386	1,248.31	1,185.89
GT 21	21.0	388 x 660	1	7.982 553	1,468.68	1,395.25
GT 26	26.7	468 x 460	1	9.524 392	1,840.60	1,748.57
GT 35	34.0	468 x 660	1	9.524 387	1,706.71	1,621.37
GT 40	40.0	468 x 710	1	9.524 394	2,248.73	2,136.29

Flake ice maker with reservoir, UFP series, air-cooled



- Environmentally Friendly Refrigerant R290
- HACCP-compliant



For fast, HACCP-compliant production of various quantities of compact, granular ice flakes for laboratories, the chemical industry and food production. For the production of up to 153 kg of ice per day.

- Easy ice removal
- Suitable for demineralised water
- Closed system for optimum hygiene
- Environmentally friendly refrigerant R290
- Air-cooled
- Depending on the model, its storage capacities from 20 to 55 kg
- Stainless steel housing
- Low energy consumption

Scope of supply: Flake ice maker with height-adjustable stainless steel feet, ice shovel, water inlet and outlet set

Specifications

Refrigerant:	R290
Permissible ambient temperature:	10 ... 43 °C
Power supply:	230 V, 50 Hz

-12%

Type	Output kg/24 hrs. up to kg	Rating	Capacity	Dimensions (W x D x H)	Weight	PK	Cat. No.	Price	Now
		W	kg	mm	kg			GBP	GBP
UFP 0244 A	113	470	20	500 x 660 x 843	67	1	4.667 960	3,384.52	2,978.42
UFP 0200 A	113	470	30	500 x 660 x 843	76	1	4.667 961	3,431.24	3,019.58
UFP 0399 A	153	700	55	738 x 690 x 1173	105	1	4.667 963	3,920.32	3,449.88

LLG-Multipurpose containers, PP, with screw cap



Transparent multipurpose containers with red screw caps made of PE. With graduation and frosted labelling field.

For research and development only.

-20%

Nominal capacity ml	Material	Material Lid	Sterile	PK	Cat. No.	Price	
						GBP	Now GBP
60	PP	PE	-	600	4.694 706	60.04	48.03
120	PP	PE	-	300	4.694 709	33.36	26.69

LLG-Multipurpose containers, PP, with screw cap, **individually wrapped**

Transparent multipurpose containers with red screw caps made of PE. Universally applicable, e.g. for storing or transporting samples. With graduation and frosted labelling field.

For research and development only.

-20%

Nominal capacity ml	Material	Material Lid	Sterile	PK	Cat. No.	Price	
						GBP	Now GBP
60	PP	PE	-	500	4.694 707	55.61	44.49
60	PP	PE	+	500	4.694 708	61.16	48.93
120	PP	PE	-	250	4.694 710	30.58	24.46
120	PP	PE	+	250	4.694 711	38.93	31.14

Measuring jugs with handle, PP



Short form. Highly translucent especially when filled with liquids. Permanently moulded graduations. Heavy duty, with non-drip spout. Thumb grip on the handle. Autoclavable

-36%

Nominal capacity ml	Grad. ml	Ext. diam. mm	Height mm	PK	Cat. No.	Price	
						GBP	Now GBP
500	25	90	116	1	9.013 591	3.03	1.94
1000	50	116	131	1	9.013 592	3.27	2.09
2000	50	145	165	1	9.013 593	5.49	3.51
3000	100	165	180	1	9.013 594	7.52	4.81
5000	250	190	225	1	9.013 595	11.01	7.05

Cylindrical jars with ribbed cap, HDPE



The cylindrical jars are supplied with inserts and caps. Thanks to the large neck they are suitable for powders, solid specimens, creamy or semisolid substances, crystals and hygroscopic substances.

-36%

Nominal capacity ml	Ext. diam. mm	Neck i. d. mm	Height mm	PK	Cat. No.	Price	
						GBP	Now GBP
70	50	36	60	10	4.672 397	8.12	5.20
120	56	36	71	10	4.672 394	8.82	5.64
250	69	50	94	10	4.672 395	8.47	5.42
500	86	70	107	10	4.672 396	10.12	6.48
1000	111	85	128	10	4.672 393	13.01	8.33
1500	111	87	182	10	9.073 444	14.63	9.36
2000	111	87	235	10	9.073 446	16.55	10.59

Volumetric flasks, borosilicate glass 3.3, class A, blue graduated, with PE stoppers, coated



The flasks are coated with a specially formulated coating that holds the broken parts together in case of breakage. The transparent coating can resist up to 135 °C with a maximum period of 30 minutes. Coated flasks should not be exposed directly to open flame.

- Conformity certified, with batch certificate
- DIN EN ISO 1042
- Calibrated to contain (IN)

-28%

Nominal capacity ml	Joint size (NS)	PK	Cat. No.	Price	
				GBP	Now GBP
50	12/21	2	4.678 024	26.08	25.98
50	14/23	2	4.678 025	26.72	26.44
100	12/21	2	4.678 026	48.33	34.80
100	14/23	2	4.678 027	49.99	35.99
200	14/23	2	4.678 029	62.87	45.27
500	19/26	2	4.678 033	82.14	59.14
1000	24/29	2	4.678 034	133.52	96.13
2000	29/32	2	4.678 035	200.48	144.35

Analytical balances Entris® II

SARTORIUS



- Internal Calibration and Adjustment Function
- Hybrid touch display



BCE124i-1CEU

- Made in Germany.
- Very fast stabilisation/settling time thanks to modern sensors
- Stainless steel weighing pan
- Excellent readability and operability with a hybrid touch display
- 12 integrated applications with GLP/GMP-compliant protocol
- Multilingual operation

High weighing space, easy access to weighing platform through side doors and upper sliding door. Specially coated windscreen against an electrostatic charge.

EU-type examination for EU member states except France.

Scope of supply: Analytical balance, power supply unit

Specifications

Readability:	0.1 mg
Reproducibility:	±0.1 mg
Linearity:	±0.06 mg
Weighing platform:	Ø 90 mm
Weighing space height:	240 mm
Dimensions (W x D x H):	219 x 317 x 345 mm
Weight:	6.2 kg
Power supply:	100 ... 240 V, 50/60 Hz

-13%

Type	Weighing range g	PK	Cat. No.	Price GBP	Now GBP
BCE64i-1CEU	0.0001 ... 60	1	4.669 166	1,879.67	1,635.31
BCE124i-1CEU	0.0001 ... 120	1	4.669 110	1,966.43	1,710.79
BCE224i-1CEU	0.0001 ... 220	1	4.669 126	2,045.95	1,779.98

Balance brush



-5%

Type	Size	PK	Cat. No.	Price GBP	Now GBP
Brush set	2, 4, 6	1	6.266 825	17.82	16.93

Precision balances type EG-N

KERN



- Internal Automatic Adjustment
- Housing Made of Impact-resistant Plastic



EG220-3NM

High-quality laboratory balances, housed in a robust and stable plastic casing. With a bar graph capacity display which shows the current available weighing range remaining.

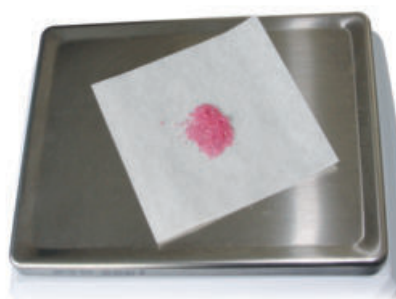
- LCD display
- Internal automatic calibration (type EG-N)
- CAL adjustment programme (type EW-N)
- Draught shield supplied with all 0.001 g readability models
- Parts counting facility, percentage weighing function, under-balance weighing facility
- Weighing with tolerance range
- RS-232 data interface

Scope of supply: Precision balance, protective working cover

-25%

Type	Capacity g	Readability g	Plate dimensions mm	PK	Cat. No.	Price GBP	Now GBP
EG220-3NM	220	0.001	Ø 118	1	9.901 018	954.00	715.50
EG420-3NM	420	0.001	Ø 118	1	9.901 019	1,044.00	783.00
EG620-3NM	620	0.001	Ø 118	1	9.901 015	1,170.00	877.50
EG2200-2NM	2200	0.01	180 x 160	1	9.901 016	999.00	749.25
EG4200-2NM	4200	0.01	180 x 160	1	9.901 017	1,098.00	823.50

LLG-Weighing paper



- Not treated with nitrogen during production
- Smooth surface
- 45 g/m² paper
- Block of 500 sheets

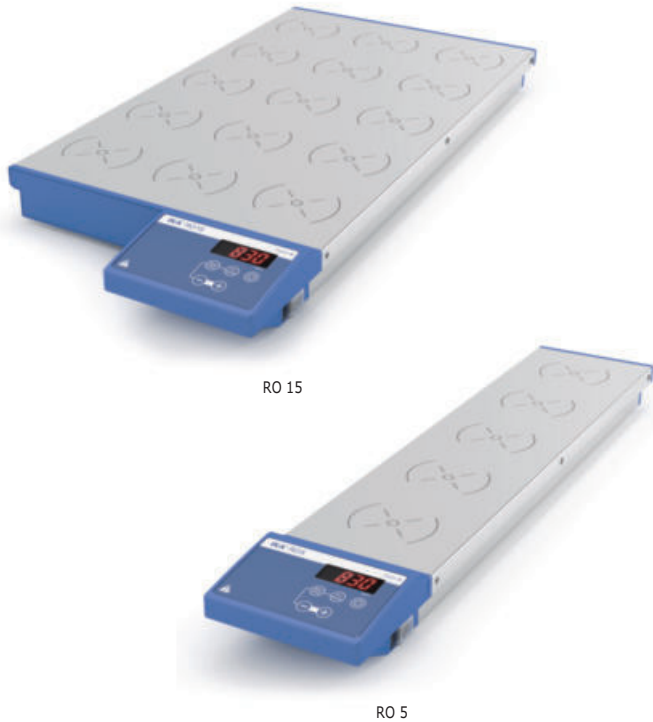
-20%

Dimensions (D x W) mm	PK	Cat. No.	Price GBP	Now GBP
76 x 76	500	6.272 246	16.96	13.57
102 x 102	500	6.272 247	19.51	15.61
152 x 152	500	6.272 248	25.61	20.49

Multi-position magnetic stirrers RO 5/10/15 series



Synchronised Stirring Units



Without heating. Digital multi-point magnetic stirrer with 5, 10 or 15 synchronised stirring points. Thanks to noiseless coil drive technology, the speeds are identical at all stirring points. A removable transparent anti-slip film is included in the scope of delivery.

- Adjustable reverse operation
- Wear-free magnetic coils
- Error Code Display
- Easy operation with touch keypad
- Suitable for continuous operation
- Adjustable speed in increments of 10 rpm

Specifications

Max. stirring quantity per stirring position (H₂O): 0.4 l
 Distance between stirring places: 90 mm
 Deviation for individual stirring positions: 0%
 Speed range: 0 to 1200 rpm
 Speed display: LED line
 Set-up plate material: stainless steel 1.4301
 Protection class acc. to DIN EN 60529: IP 40
 Power supply: 100-240 V, 50/60 Hz

-14%

Type	Stirring positions	Dimensions (W x D x H)	PK	Cat. No.	Price	Now
		mm			GBP	GBP
RO 5	5	120 x 570 x 60	1	9.720 208	1,517.40	1,304.96
RO 10	10	190 x 570 x 60	1	9.720 222	1,751.40	1,506.20
RO 15	15	280 x 570 x 60	1	9.720 226	2,448.00	2,105.28

LLG-Magnetic stirrer RCT standard 2.0, Set

The next generation of our top-selling IKA/LLG-Labware co-branded LLG-RCT Standard magnetic stirrer. New design, new features! Trusted and reliable quality!



- Digital controlled speed and temperature
- Clearly arranged LED display
- Digital display of set safety temperature limit
- Hot top indicator, hot surface warning to prevent burns
- Connection for external PT1000 temperature probe
- Aluminium hotplate for optimal heat transfer
- Enhanced safety due to improved heat control technology
- USB interface
- Supplied with housing protection cover
- Tested acc. to DIN EN IEC 61010-1

Scope of supply:

Magnetic stirrer, contact thermometer ETS-D5, temperature probe PT1000, housing protection cover, stand accessories



Specifications

Max. stirring quantity (H₂O): 20 l
 Speed range: 50 ... 1500 rpm
 Heating plate: Ø 135 mm
 Temperature range: RT + device self-heating ... 310 °C
 Heat output: 600 W
 Safety temperature range: 50 ... 360 °C
 Dimensions (W x D x H): 160 x 270 x 85 mm
 Weight: 2.4 kg
 Power supply: 220 ... 230/115/100 V, 50/60 Hz
 IP code: IP 42

-9%

Description	Plug type	PK	Cat. No.	Price	Now
				GBP	GBP
LLG magnetic stirrer RCT standard 2.0, set	EU	1	6.320 411	1,206.81	1,098.20
LLG magnetic stirrer RCT standard 2.0, set	CH	1	6.322 748	1,206.81	1,098.20
LLG magnetic stirrer RCT standard 2.0, set	UK	1	6.322 749	1,206.81	1,098.20

LLG-Magnetic stirring bars, cylindrical, PTFE, *eco pack*



Circular, smooth and PTFE-coated. Packaging size: 10 pieces

-20%

Diam.	Length	PK	Cat. No.	Price	Now
mm	mm			GBP	GBP
6	10	10	9.198 910	6.41	5.13
3	12	10	9.198 766	5.79	4.63
6	15	10	9.198 919	7.13	5.70
6	20	10	9.198 920	8.78	7.02
6	25	10	9.198 925	10.97	8.78
8	25	10	9.198 767	11.76	9.41
6	30	10	9.198 930	12.62	10.10
6	35	10	9.198 935	15.42	12.34
8	40	10	9.198 940	19.51	15.61
8	50	10	9.198 950	25.67	20.54

Overhead Stirrers Hei-TORQUE Core



Compact, electronic overhead stirrer for easy operation.

- Can be integrated into closed systems such as fume hoods, reactors or production systems
- Suitable for low to medium-viscosity media
- Quick-action chuck for stirring tools up to 10 mm in diameter
- "Max" button for short-term operation at maximum speed
- Timer function
- Digital rotation speed display
- Automatic switch-off with overheating protection



Specifications

Stirring quantity max. (H ₂ O):	25 l
Speed range:	20 ... 2000 rpm
Max. viscosity:	10000 mPas
Motor rating input/output:	105/75 W
Max. torque at stirring shaft:	40 Ncm
Display:	digital
Chuck range:	8 ... 10.5 mm
Dimensions (W x D x H):	70 x 195 x 281.5 mm
Weight:	2.3 kg
Power supply:	230 V, 50/60 Hz
Protection class:	IP 42

Type	PK	Cat. No.	Price	Now
Hei-TORQUE Core	1	4.662.304	945.00	785.10

-17%

Impellers for Hei-TORQUE Core

Shaft diameter: 8 mm

Propeller-Type Impeller

- For mixing products with medium or high viscosity
- These models create an axial flow

Radial Flow Impeller

- For mixing products with average viscosity up to <500 mPas
- These impellers create a radial flow



Type	Material	Dimensions	PK	Cat. No.	Price	Now
Turbine stirrer TR 20	V 2A	Ø 29	1	9.816.548	89.10	77.52
Turbine stirrer TR 21	V 2A	Ø 50	1	9.816.549	95.40	83.00
Propeller stirrer PR 30	V 2A	Ø 58	1	9.816.550	99.90	86.91

-13%

Disperser OV 725 Digital System



Complete Set



Digital disperser for fast homogenizing, emulsifying, suspending, as well as mixing samples. The comfortable rotating knob allows precise electronic speed settings and controls up to 25000 rpm.

- Powerful, brushless motor
- User-friendly, clear control panel shows speed parameters at a glance
- With smooth start
- Timer adjustable up to 99 h 59 min
- Quick and easy dispersing tool installation
- LED indicator system and maintenance timer provide information on the time remaining until maintenance and allow prompt gasket replacement



Scope of supply:

Disperser, stand with double rod, dispersing tool D20-S20C-P-R20S, tool disassembly kit

Type	Volume	Rotation speed	PK	Cat. No.	Price	Now
OV 725 Digital System	0.2 ... 2500 ml	2,000 ... 25000 rpm	1	4.699.483	2,421.00	2,178.90

-10%

Beakers Super Duty, DURAN®, low form



With approximate graduations and spout. Reinforced, sturdy rim and increased mechanical strength for heavy duty. Glass Type I/neutral glass as per USP, EP and JP.

Nominal capacity	Diam.	Height	PK	Cat. No.	Price	Now
150 ml	60 mm	80 mm	1	9.051.150	6.79	5.16
250 ml	70 mm	95 mm	1	9.051.151	6.79	5.16
400 ml	80 mm	110 mm	1	9.051.152	9.01	6.85
600 ml	90 mm	125 mm	1	9.051.153	10.49	7.97
1000 ml	105 mm	145 mm	1	9.051.154	16.34	12.42
2000 ml	132 mm	185 mm	1	9.051.155	28.58	21.72
5000 ml	170 mm	270 mm	1	9.051.156	154.23	117.21

-24%

Digital Vortexer LLG-uniTEXER 4



- High Speed Up to 4200 rpm
- Infinitely Variable Speed Control
- Robust and Non-slip!



Compact vortexer with brushless motor and infinitely variable speed control up to 4200 rpm for optimal mixing results. The digital display alternately shows the set speed and time.

- Programmable Pulse mode
- 3-way switch (on/off/touch)
- Timer adjustable from 1 min up to 999 min

Scope of supply:

Vortexer, conical tube attachment, round disk attachment, universal plug



Type of movement:	Orbital
Orbital diameter:	4 mm
Speed range:	300 ... 4200 rpm
Dimensions (W x D x H):	205 x 136 x 138.5 mm
Weight:	2.8 kg
Power supply:	110 ... 240 V, 50/60 Hz
IP code:	IP 42

Type	PK	Cat. No.	Price	Now
			GBP	GBP
LLG-uniTEXER 4	1	6.263 500	160.01	135.08

-16%

Orbital shaker for CO₂ Incubators



Orbital shaker for experiments with tissue cultures and cultivations of eukaryotic cells in CO₂ Incubators.

- Different platforms are available (must be ordered separately)
- With a remote controller for protection of the electronics

Specifications

Type of movement:	orbital
Orbit:	20 mm
Max. Load:	3.0 kg
Speed range:	50 ... 250 rpm
Timer range:	1 min ... 96 h or non-stop
Dimensions (W x D x H):	255 x 255 x 100 mm
Weight:	3.4 kg
Power supply:	100 ... 240 V, 50/60 Hz

Type	PK	Cat. No.	Price	Now
			GBP	GBP
CPS-20	1	4.684 290	1,638.00	1,441.44

-12%

Microplate shaker Endeavor™ 5000



Robust shaker with microprocessor control for powerful mixing of up to 4 microtitre plates in the laboratory. The microplate shaker is equipped with a menu to set, store, and recall multi-step programs.

- Bright, backlit LCD display for speed and time
- RS232 interface for data logging and control
- Visual and audible alarm
- With timer
- Suitable for use in cold rooms and incubators

Type	Rotation speed	Dimensions (W x D x H)	PK	Cat. No.	Price	Now
	rpm	mm			GBP	GBP
E51LDM03	100 ... 1200	262 x 420 x 119	1	4.693 841	754.00	565.50

-25%

Platforms for Orbital shaker CPS-20



PUP-12

Type	Description	PK	Cat. No.	Price	Now
				GBP	GBP
Bio PP-4	Flat platform, working area 230 x 230 mm	1	9.721 018	60.30	53.06
PUP-12	Universal platform, working area 270 x 195 mm	1	9.721 021	157.50	138.60
P12-100	Platform with clamps for 12 x 100 ml flasks / 150 ml beakers	1	9.721 023	252.00	221.76
P6-250	Platform with clamps for 6 x 250 ml flasks / 300 ml beakers	1	9.721 024	236.70	208.30
P16-88	Platform with spring holders for 88 tubes up to 30 mm	1	9.721 049	288.00	254.23

-12%

Thermo shaker Matrix Orbital Δ/Orbital Δ +



F2.0

Powerful thermoshakers available for samples with the smallest volumes. Thermo Shaker Orbital Δ + with heating/cooling function (cooling rate 2.5 K/min).

- A large and clear display with a convenient menu structure allows for intuitive operation
- Two different speed modes for optimal mixing
- Robust aluminum die-cast housing

Specifications	Orbital Δ // Orbital Δ +
Temperature range:	ambient +5 ... 100 °C // ambient -15 ... 100 °C
Temperature control:	1 ±K
Uniformity:	0.5 °C
Orbit:	1.5 mm
Display:	TFT
Programs:	2
Timer:	1 s ... 6000 min
Capacity:	0.3 kg
Dimensions (W x D x H):	220 x 350 x 150 mm // 220 x 350 x 125 mm
Weight:	9.5 kg // 8.8 kg
Power consumption:	100 W
Power supply:	100 ... 240 V, 50/60 Hz
IP code:	IP 21

-14%

Type	Description	PK	Cat. No.	Price	Now
				GBP	GBP
Orbital Δ F0.5	fix attachment, 24 x 0.5 ml	1	4.664 742	2,390.40	2,055.74
Orbital Δ F1.5	fix attachment, 24 x 1.5 ml	1	4.664 740	2,390.40	2,055.74
Orbital Δ F2.0	fix attachment, 24 x 2.0 ml	1	4.664 743	2,390.40	2,055.74
Orbital Δ+	variable attachments	1	4.664 744	2,480.40	2,133.14

Accessories for Thermo shaker Matrix Orbital Δ+



-14%

Description	PK	Cat. No.	Price	Now
			GBP	GBP
Cover	1	4.672 749	106.20	91.33
Attachment for 96 well PCR plate	1	4.672 751	594.90	511.61
Attachment for 24 x 1.5 ml vessels	1	4.672 754	495.90	426.47
Attachment for 24 x 2.0 ml vessels	1	4.672 755	495.90	426.47
Attachment for 8 x 15 ml vessels	1	4.672 758	531.00	456.66
Attachment for microplates	1	4.672 761	594.90	511.61

Dry Block Heaters, Digital



Each of the models is compatible with the separate interchangeable modular blocks. Each block has a thermowell for measuring the block temperature.

- Microprocessor Control
- LED Display
- Temperature Calibration Mode
- Caution Hot Indicator
- Audible Alarm

Without blocks. Please order separately.

Specifications

Temperature range:	ambient +5 to 120 °C
Temperature stability at 37 °C:	±0.2 °C
Uniformity within block at 37 °C:	±0.2 °C
Uniformity across blocks at 37 °C/	
Heat up time to 100 °C	
1 block:	-/45 min
2 blocks:	±0.1 °C/50 min
4 blocks:	±0.2 °C/60 min
6 blocks:	±0.3 °C/65 min
Permissible ambient conditions:	18 to 33 °C
Power supply:	230 V, 50/60 Hz

-49%

Capacity	Dimensions (W x D x H) mm	PK	Cat. No.	Price	Now
				GBP	GBP
1 block	203 x 315 x 89	1	4.659 491	602.31	307.18

Blocks for block thermostats, digital



-25%

For	No. of wells	Diam. mm	Depth mm	PK	Cat. No.	Price	Now
						GBP	GBP
1.5 ml	20	11.5	39.9	1	4.659 846	120.15	90.11
2 ml	20	11.5	38.1	1	4.659 875	120.15	90.11
50 ml	5	29.0	47.6	1	4.659 852	120.15	90.11
15 ml	12	17.1	44.5	1	4.659 856	120.15	90.11

Laboratory chiller LABOCOOL LC 400

BANDELIN

New



The laboratory chiller LABOCOOL LC 400 is used to remove process heat and was specially developed for cooling samples during sonication in an ultrasonic bath.

- Digital display shows water temperature and status of the cooling function
- Practical recessed grips in the housing
- Environmentally friendly thanks to natural refrigerant R-290
- Suitable for all SONOREX ultrasonic baths with bottom drain
- Protection class I
- Incl. connecting hub, three-way ball valve and hose (3 m)

Specifications

Temperature range:	5 ... 30 °C
Cooling power:	440 W
Flow rate:	600 l/h
Pump power:	10 W
Dimensions (W x D x H):	320 x 410 x 420 mm
Weight:	18 kg

-5%

Type	Plug type	PK	Cat. No.	Price	Now
				GBP	GBP
LABOCOOL LC 400	EU	1	4.686 330	3,509.10	3,333.65
LABOCOOL LC 400	CH	1	4.686 331	3,509.10	3,333.65

Ultrasonic Baths SONOREX DIGITEC

BANDELIN



Ultrasonic baths in stainless steel housing with heating, adjustable temperature range from 20 to 80 °C and warning LED at excess temperature, degassing of liquids (DEGAS), Pulse function, SweepTec®. Power supply 230 V ~, 50/60 Hz.

-5%

Type	Capacity of the bath	Internal dimensions (W x D x H)	PK	Cat. No.	Price	Now
					GBP	GBP
DT 31 H	0.9	190 x 85 x 60	1	9.877 831	486.90	409.00
DT 52 H	1.8	150 x 140 x 100	1	9.877 833	780.30	655.45
DT 100 H	3.0	240 x 140 x 100	1	9.877 835	822.60	690.98
DT 255 H	5.5	300 x 150 x 150	1	9.877 840	1,348.20	1,132.49
DT 510 H	9.7	300 x 240 x 150	1	9.877 842	1,512.00	1,270.08

Suspension baskets for Sonorex DIGITEC ultrasonic baths



Stainless steel. Optimal ultrasonic wave transmission.

-21%

Type	For bath type	Dimensions (W x D x H)	PK	Cat. No.	Price	Now
					GBP	GBP
K 1 C	DT 52 H	120 x 110 x 40	1	9.877 631	55.80	44.08
K 3 C	DT 100 H	200 x 110 x 40	1	9.877 633	66.60	52.61
K 5 C	DT 255 H	260 x 110 x 40	1	9.877 635	79.20	62.57
K 08	DT 31 H	170 x 65 x 50	1	9.877 630	43.20	34.13
K 10	DT 510 H	250 x 195 x 50	1	9.877 697	182.15	143.90

Noise protection boxes ML/XL



A noise protection box with a quiet fan and optimal insulation guarantees low-noise cleaning. The interior lighting and glass door allow to observe the cleaning process.



- Noise is reduced by max. 85%
- The box can be opened from the top and front
- Laterally arranged halogen lamps
- Stainless steel jacket

Scope of supply ML: Noise protection box, bottom tray with gland plate, power supply, manual
For use with: Elmasonic Easy 10/20/30/40/60/100/120/180, Elmasonic Select 30/40/60/100/120/180, Elmasonic P 30/60/120/180

Scope of supply XL: Noise protection box, 2 bottom trays with gland plate, splash plate, power supply, manual
For use with: Elmasonic Easy 300, Elmasonic Select 80/150/300, Elmasonic P 70/300

-21%

Type	External dimensions (W x D x H)	PK	Cat. No.	Price	Now
				GBP	GBP
ML	545 x 530 x 525	1	6.326 321	837.00	661.23
XL	850 x 605 x 525	1	6.492 438	981.00	774.99

Speed vacuum systems SC 920 G



- Speed-controlled
- Integrated Gas Ballast Valve
- Automatic boiling point detection



- Vacuum system for 1 rotary evaporator
- Application: Rotary evaporation, distillation, central vacuum supply
- Delivery rate up to 3 m³/h and a final vacuum of 2 mbar abs.
- Radio remote control for safe operation outside closed fume cupboards
- Automatic, precise boiling point detection and boiling point tracking via integrated ramp function
- PPS pump heads in combination with a PTFE-coated diaphragm are ideal for aggressive/corrosive gases and vapours
- Speed controlled
- Integrated gas ballast valve



Specifications

Connectors for tube: pneumatic ID10 mm, coolants ID8 mm inert gas ID6 mm

Permissible media and ambient temperature: 5 to 40 °C
Valves: FFPM

-5%

Type	Flow rate L / min.	Plug type	PK	Cat. No.	Price	Now
					GBP	GBP
SC 920 G	20	EU	1	4.658 071	4,619.70	4,388.72
SC 920 G	20	UK	1	6.319 732	4,619.70	4,388.72

With overload protection and mains fuse

LLG-Vacuum measuring instrument DVR 2 pro

Versatile vacuum gauge for vacuum measurement between atmospheric pressure and 1 mbar.



- Mains independent due to battery operation
- Large display
- High measuring accuracy
- With support rod
- All parts in contact with media are made of chemically resistant materials



Scope of supply:

Vacuum measuring instrument with connections for small flange D16, compression fitting and tubing nozzle for tubing with 6 to 10 mm ID.

Specifications

Measuring range: 1080 to 1 mbar (hPa), 810 to 1 Torr
Measuring accuracy: < 1 mbar (0.75 Torr) ±1 digit
Power supply/battery: 9 V battery
Dimensions (W x D x H): 115 x 115 x 66 mm
Weight: 0.40 kg

-5%

Type	PK	Cat. No.	Price	Now
			GBP	GBP
DVR 2 pro	1	6.263 582	576.00	547.20

Piston pump LLG-uniVACUUPUMP 1



Can be Used as a Vacuum Pump and Compressor



The portable piston pump LLG-uniVACUUPUMP 1 has been developed for vacuum and pressure applications in the laboratory. The LLG-uniVACUUPUMP 1 operates oil-free and can also be used as a compressor to a pressure of up to 3.3 bar. Not recommended for pumping organic, acidic, or basic vapours.

Advantages:

- Dry-running technology for physical applications
- Can be used as a vacuum pump and compressor
- Cost-effective alternative for water pumps
- Oil-free, suitable for continuous operation
- Suction/pressure connection: hose nozzle DN 6 for hose inner diameter 6 mm



Scope of supply: Pump, incl. 2 hose clamps, EU + UK-plug power cord

Specifications

Pump speed 50/60 Hz at atmospheric pressure: 9.2/11 l/min
Final pressure: 292 mbar
Max. overpressure: 3.3 bar
Suction/pressure connection: DN 6
Dimensions (W x D x H): 194 x 114 x 191 mm
Weight: 2.0 kg
Power supply: 230 V/50 Hz
IP code: IP 20

-7%

Type	PK	Cat. No.	Price	Now
			GBP	GBP
LLG-uniVACUUPUMP 1	1	6.263 580	282.54	262.73

Water jet pumps, PP



For continuous use at temperatures up to 80 °C max. High chemical resistance as the media being pumped only comes into contact with PP, FKM and PTFE. Integral non-return valve increases safety.

Comprises:

Water jet pump, including:
Mains water connections: R 3/4" sleeve nut, R 1/2" reducing adapter and flexible tubing connection (nozzle) with external diameter from 10 mm to 12 mm.
Vacuum connection: Detachable nozzle with external diameter from 6 mm to 9 mm and GL 14 screw cap.

-18%

Type	PK	Cat. No.	Price	Now
			GBP	GBP
Water jet pump	1	9.303 125	43.00	35.33
Reducing adapter R 3/8" for water jet filter pump	1	7.020 037	3.87	3.17
Reducing adapter M 22x1 for water jet filter pump (thread for screen tap)	1	7.020 038	3.87	3.17

LABORTOPS

Pump drive Hei-FLOW Precision 01



- For Dosing and Conveying
- Freely Selectable Process Parameters
- With Overload Protection

Dosing and conveying pump for reproducible results.
With freely selectable process parameters.

- Speed, direction of rotation and on/off function can be controlled via an analogue interface or digitally via the built-in RS232 interface controllable
- Buttons for setting all process parameters
- Easy calibration of the delivery volume and delivery rate
- The motor with a soft start reliably protects against splashing media
- With overload protection that switches off the device in the event of overheating, it is important for unattended continuous operation

With an optional pump head adapter the Hei-FLOW Value 01 can be upgraded for multi-channel operation.

The pump head is not included. Please order separately.



Specifications

Speed range:	5 ... 120 rpm
Flow rates single-channel pumps:	0.38 ... 813 ml/min
Flow rates multi-channel pumps:	0.005 ... 364 ml/min
Flow rate accuracy (water without counter pressure):	±1%
Control accuracy motor:	±0.5%
Motor power:	100 W
Volume dosing:	0.001 ... 9999 ml
Interval dosing:	0.001 ... 9999 ml with pauses 0.1 s ... 750 h
Permissible ambient conditions:	5 ... 31 °C
Permissible rel. humidity:	80%
Dimensions (W x D x H):	166 x 256 x 225 mm
Protection class DIN EN 60529:	IP 55
Weight:	7.7 kg

Single-channel Pump Heads SP quick for Pump drives Hei-FLOW Precision

- Fast and convenient tube changes
- Low pulsation due to 5 roller system
- Pump head features ball bearings
- Rollers made of stainless steel
- For tubes with a 1.6 mm or 2.5 mm wall thickness (wt)
- Depending on the drive and tubing, the flow rate ranges from 0.38 to 3436 ml per minute



Type	PK	Cat. No.	Price	Now
Hei-FLOW Precision 01	1	9.829 244	3,243.85	2,789.71

-14%

Type	Tubing wall thickness	Flow rate	PK	Cat. No.	Price	Now
SP quick	1.6	0.38 ... 3436 ml/min.	1	9.829 250	502.20	416.83

-17%